



**iMapInvasives**

*Sharing information for strategic management*



# Pull Together 2014 iMapinvasives map chat



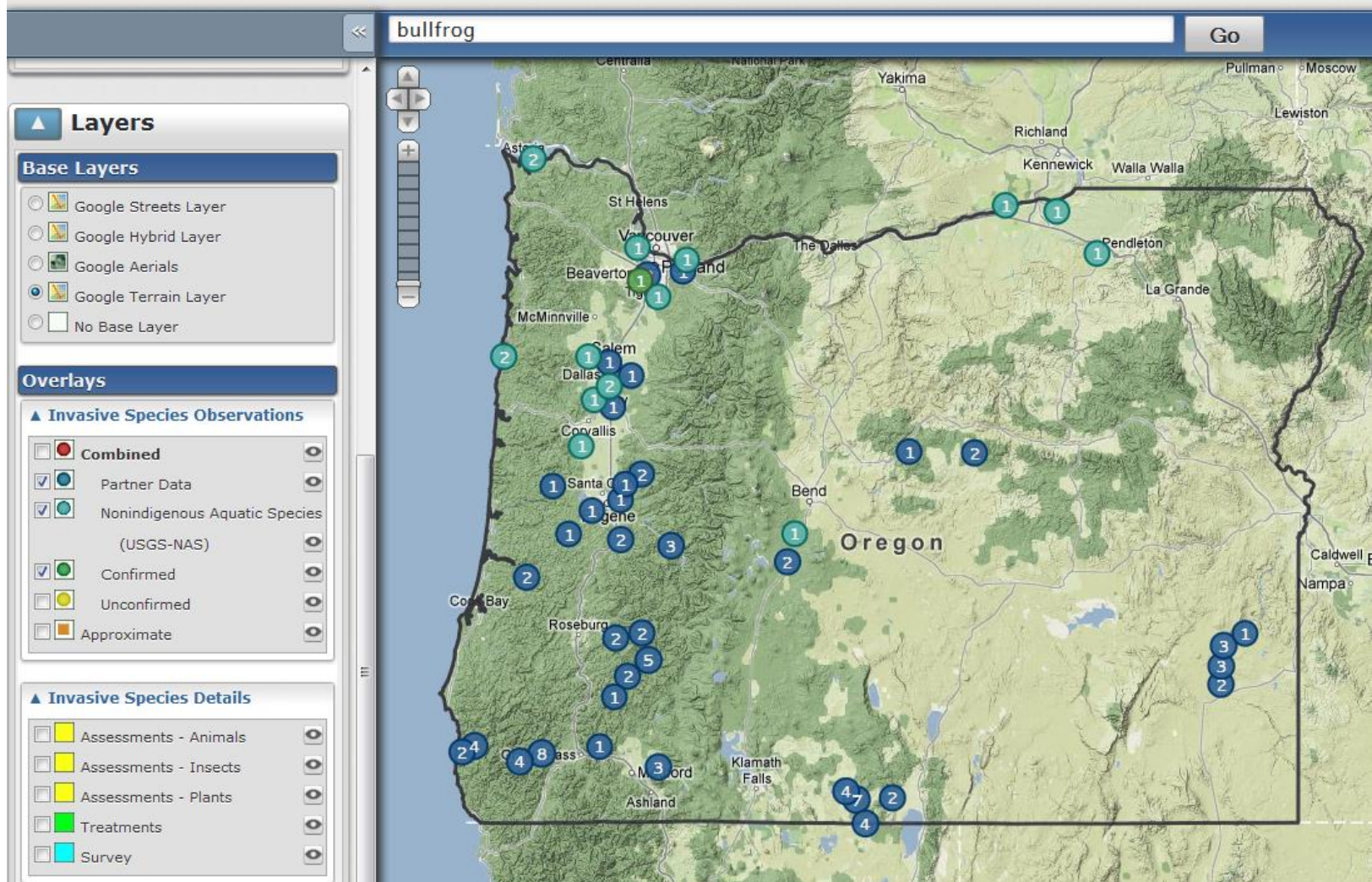
Jan. 2014

Lindsey Wise, Oregon Biodiversity Info Center

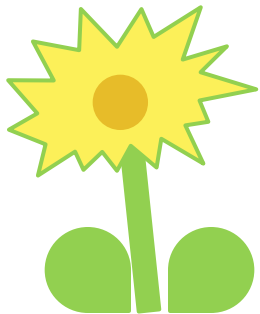
# Why iMapInvasives?

- Selected by Oregon Inv Spp Council after survey of managers
  - ▣ Plants, Animals, Insects
  - ▣ Points and Polygons
  - ▣ Online, Open Source
  - ▣ Multiple user levels to protect sensitive information
  - ▣ Data fields geared towards managers

# What is iMapInvasives?



# Data Structure Overview

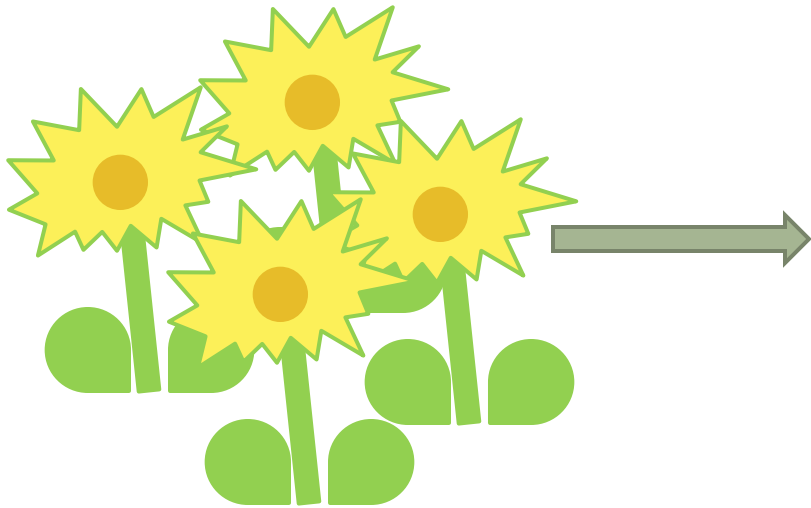


See an invasive species

Plot its location as an observation point



# Data Structure Overview

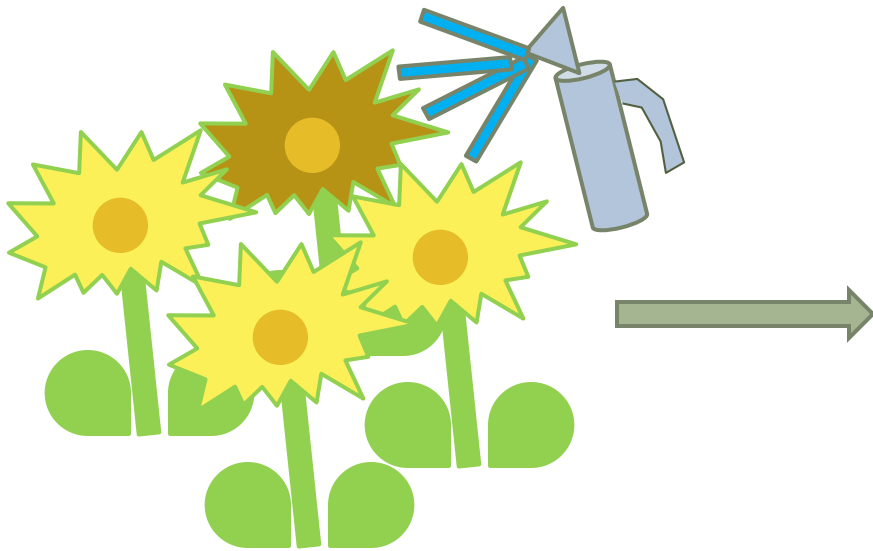


Want to record patch size?



Add an assessment polygon

# Data Structure Overview

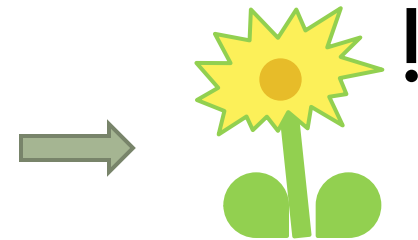
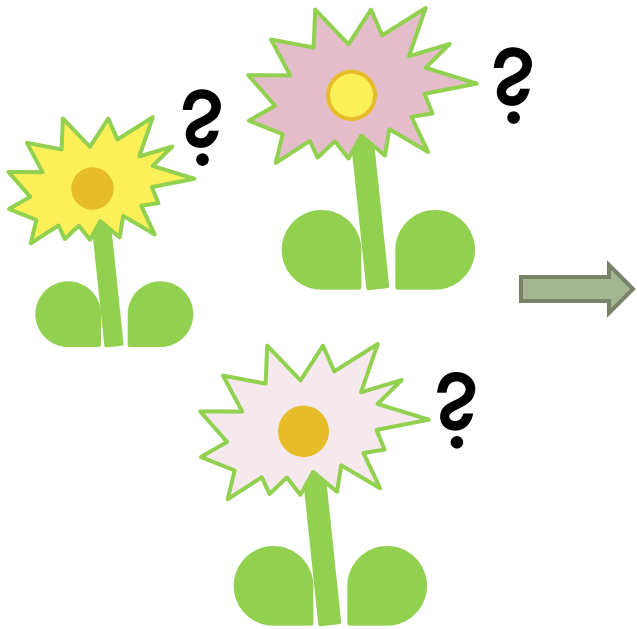


Treated some plants?



Add a treatment polygon

# Data Structure Overview

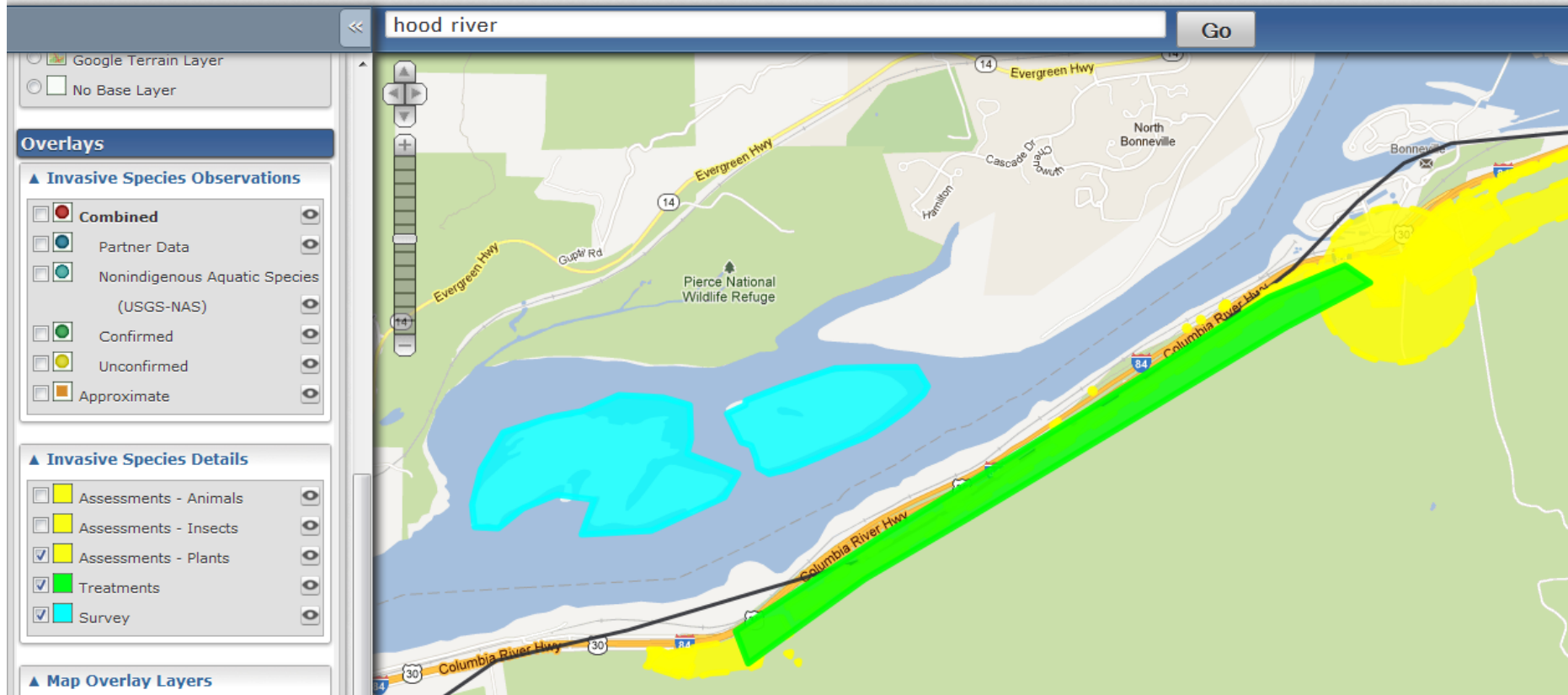


You can record negative info too: Species looked for....

Area Surveyed

Species found

# See All Activity in an Area



The screenshot displays the iMapInvasives web application interface. At the top, a search bar contains the text "hood river" and a "Go" button. The main map area shows a geographical view of the Hood River region, including the Columbia River, Evergreen Hwy (14), and Columbia River Hwy (30). The map is overlaid with several colored regions: a large yellow area on the right, a green area along the Columbia River Hwy, and cyan areas in the river. A control panel on the left side of the map includes a search bar, a "Go" button, and several sections for map overlays and details.

**Overlays**

- Google Terrain Layer
- No Base Layer

**▲ Invasive Species Observations**

- Combined
- Partner Data
- Nonindigenous Aquatic Species (USGS-NAS)
- Confirmed
- Unconfirmed
- Approximate

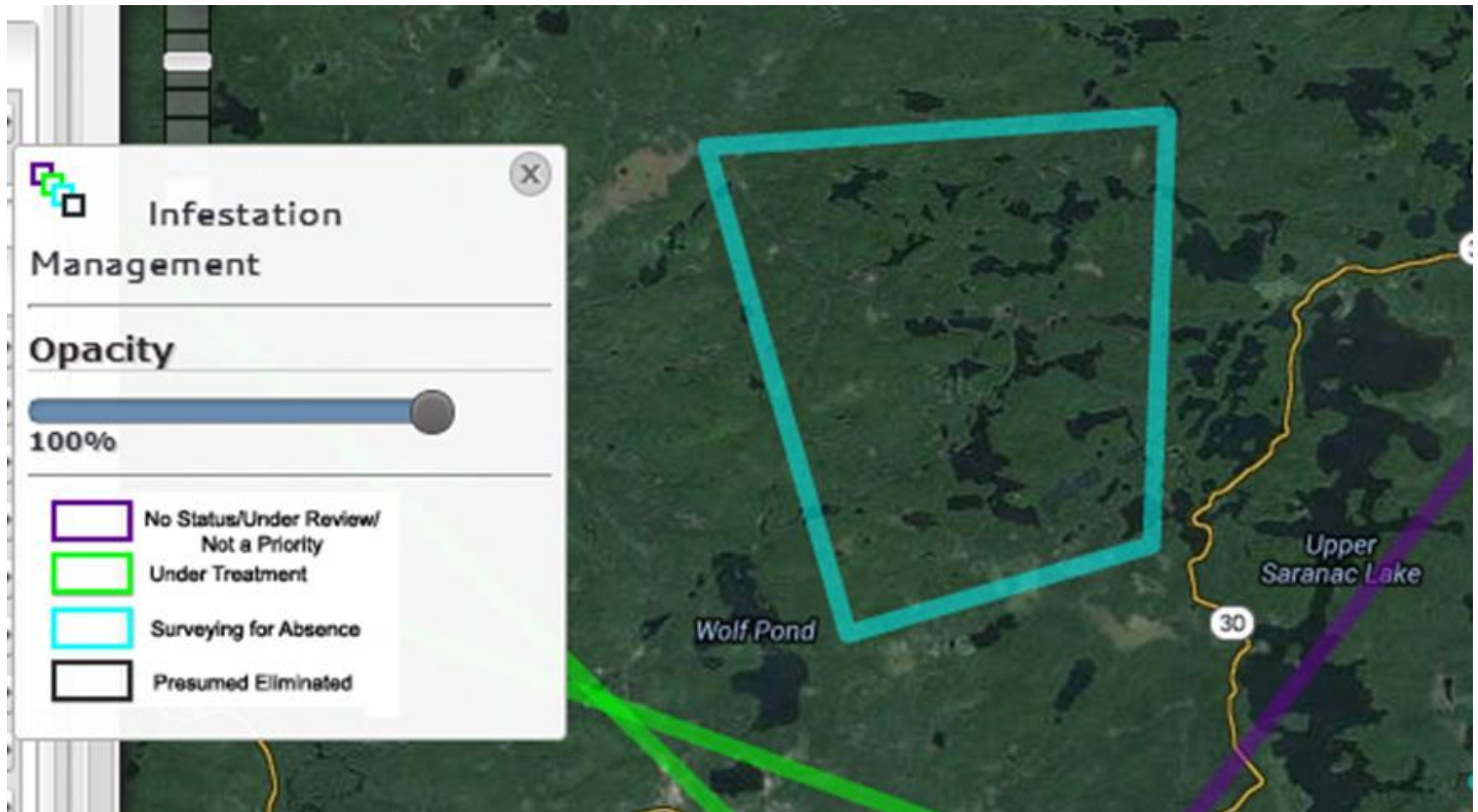
**▲ Invasive Species Details**

- Assessments - Animals
- Assessments - Insects
- Assessments - Plants
- Treatments
- Survey

**▲ Map Overlay Layers**



# Track Population Status



# Who Shares with iMapInvasives?

- The Feds
  - BLM, USFS, USGS, USACE
- The State
  - ODA, Oregon Flora Project, ODFW, OPRD
- The Locals
  - Clackamas, East & West Multnomah SWCDs, Cities of Portland and Vancouver, Portland Water Bureau
- Nonprofits
  - The Nature Conservancy, Wallowa Resources, Oregon Flora Project, OR Inv Spp Hotline



# Enter, View, Download Data Online

My iMapInvasives

Resources

Data Management

System Management

## Enter Data



**Step 3 - What (Species)**  
What Species Was Observed?

Species Type  
 Animal  Insect  Plant

By County Name

By Scientific Name

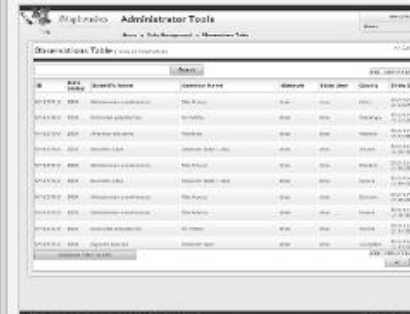
- Observation
- Survey
- Treatment

## View the Map



- View the Map

## View Table



**Observations Table**

ID	Date	Species Name	Location Name	Observer	Date Obs	County	Date Listed
1000001	2008-08-01	Spizella socialis	St. Ignace	John	2008-08-01	St Ignace	2008-08-01
1000002	2008-08-01	Spizella socialis	St. Ignace	John	2008-08-01	St Ignace	2008-08-01
1000003	2008-08-01	Spizella socialis	St. Ignace	John	2008-08-01	St Ignace	2008-08-01
1000004	2008-08-01	Spizella socialis	St. Ignace	John	2008-08-01	St Ignace	2008-08-01
1000005	2008-08-01	Spizella socialis	St. Ignace	John	2008-08-01	St Ignace	2008-08-01
1000006	2008-08-01	Spizella socialis	St. Ignace	John	2008-08-01	St Ignace	2008-08-01
1000007	2008-08-01	Spizella socialis	St. Ignace	John	2008-08-01	St Ignace	2008-08-01
1000008	2008-08-01	Spizella socialis	St. Ignace	John	2008-08-01	St Ignace	2008-08-01
1000009	2008-08-01	Spizella socialis	St. Ignace	John	2008-08-01	St Ignace	2008-08-01
1000010	2008-08-01	Spizella socialis	St. Ignace	John	2008-08-01	St Ignace	2008-08-01

- All Observations
- Surveys
- Treatments
- Assessments Animals  
Insects Plants

## Query and Reports



**Query**

Entity:


Date:

County:

Result:

- **Custom Observation Query**
- View Report for All Data
- View Infested Lake Report
- View Infested Lake Report with Observations

# Add Data Online

 **iMapInvasives**  
*geotracking invasive exotic species*

**Oregon Data Entry**

Welcome back, **Lindsey** (linwise)  
[Home](#) [Log Out](#)

**1** **2** **3** **4** **5** **6** **7**

## Step 4 What (Species)

What Species Was Observed?

**Species Type**


Animal  Insect  **Plant**

**By Common Name**

Japanese Knotweed, Japanese Bamboo, Japanese Arr ▼

**By Scientific Name**

Polygonum cuspidatum, Fallopia japonica var. japonica ▼



**Image Credit**  
Tom Heutte, USDA Forest Service

[Further Species Information](#)

[Show Full Image](#)



# Mobile Developments

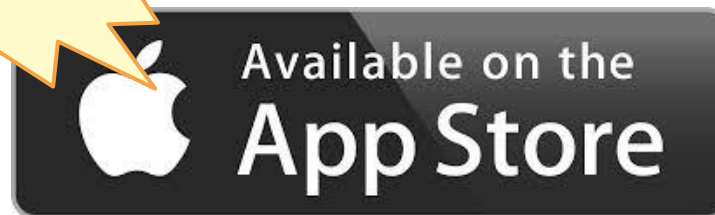
- Apple, Android, Google phones & tablets
  - ▣ Observation data entry through browser
  - ▣ Requires Internet access
  - ▣ Polygon data types not supported



# Mobile Developments

- Smartphone App (in dev.)
  - ▣ Android will come first, then Apple
  - ▣ Does not require Internet access
  - ▣ Observation data entry only

Coming Soon



# Mobile Developments

- Field Data Collection Tool (in dev.)
  - ▣ Application for Tablets with GPS
  - ▣ Out-of-service data collection
  - ▣ All iMap data types
  - ▣ Synch field data to iMap site when in connectivity
  - ▣ GeoPaparazzi and Android DB





**iMapInvasives**

*Sharing information for strategic management*



# Thank you!

[www.imapinvasives.org](http://www.imapinvasives.org)

[www.imapinvasives.org/orimi](http://www.imapinvasives.org/orimi)



Jan. 2014

Lindsey Wise, Oregon Biodiversity Info Center