



4-COUNTY Cooperative Weed Management Area

2019 Annual Report



4-County Cooperative Weed Management Area

info@4countycwma.org

www.4countycwma.org

A Message from Our Chairs

The **4-County Cooperative Weed Management Area (CWMA)** celebrated its 15th anniversary in 2019. We can reflect nostalgically on humble beginnings in cramped meeting rooms at West Multnomah Soil and Water Conservation District and Metro, a strong legacy of leadership left by those who came before, and passionate professionals throughout the region joining together to form partnerships through the CWMA. We are proud of the CWMA's role in our collective effort to challenge the spread of invasive weeds on a regional level. The 4-County CWMA partnership is an important example of a dedicated group of people collectively rising to meet a threat that doesn't respect the boundaries that encumber our individual organizations.

The accomplishments reflected in this annual report uphold a strong tradition of regional collaboration, featuring another very successful and thought provoking Pull-Together event, an extremely hot field day in Multnomah County that wasn't for the faint of heart, as well as the accomplishments of our committees in their efforts to support partners.

As proud as we are of the past and the legacy of every partner that made the 4-County CWMA what it is today, we are extremely excited to position the CWMA to meet the challenges of the next decade. We will soon call on partners to renew the Memorandum of Understanding (MOU) and your commitment to the CWMA's future. In addition to providing organizational support and a forum for communication and coordination, we will work to innovate in the areas of education and outreach, access to technical research and regional mapping and data management to better support and inform our organizations today and into the future. In this way, we are reimagining what the CWMA can do to better serve our partners in the years to come.

Sincerely,

Mitch Bixby

Botanic Specialist (ED/RR)

City of Portland – Bureau of Environmental Services

4-County CWMA Chair

Aaron Shaw

Natural Resource Program Manager

Tualatin Soil and Water Conservation District

4-County CWMA Vice-Chair



The intention of the 4-County Cooperative Weed Management Area (CWMA) is to foster partnerships amongst local organizations and land managers to enhance available resources and help maximize efficiency and effectiveness of noxious weed management, regardless of political boundaries.

Our Partners

- Portland Audubon
- Bureau of Land Management—Northwest Oregon
- Cascade Pacific—Resource Conservation and Development
- City of Gresham
- City of Portland—Bureau of Environmental Services
- Clackamas River Basin Council
- Clackamas Soil and Water Conservation District
- Clark County Noxious Weed Control Board
- Clark Public Utilities
- Clean Water Services
- Columbia Land Trust
- East Multnomah Soil and Water Conservation District
- Johnson Creek Watershed Council
- Metro
- Mt. Hood National Forest
- North Clackamas Parks and Recreation District
- Oregon Department of Transportation
- Portland State University
- Port of Portland
- Sandy River Watershed Council
- The Nature Conservancy
- Tryon Creek Watershed Council
- Tualatin Hills Park and Recreation District
- Tualatin River Watershed Council
- Tualatin Soil and Water Conservation District
- U.S. Department of Agriculture—Natural Resources Conservation Service; Clackamas County, Multnomah County, and Washington County
- U.S. Forest Service —Mt. Hood National Forest
- West Multnomah Soil and Water Conservation District



Field Day attendees tour Metro's riparian restoration project at Ambleside.

Pull Together

The 4-County CWMA hosted this year's Pull Together at the McMenamins Kennedy School Theater, once again! Due to its unique atmosphere, cozy seating, and endless supply of coffee, the Kennedy School has become a crowd-pleasing location for our annual noxious weed symposium.

This year, the Pull Together brought in over 130 attendees ranging from various professional backgrounds, including local, state, and federal governments; universities; restoration contractors; urban and rural land managers; non-profit organizations; private landowners; and more. This informational event is directed towards individuals who are interested in invasive plant management and offers Oregon Department of Agriculture, Washington State Department of Agriculture, and International Society of Arboriculture recertification credits for attendees.

We provided a diverse group of speakers who delved into a variety of topics surrounding pollinator habitat site preparation, invasive and native hawkweed identification, glyphosate risk communication, unintended consequences of restoration, and others. Our keynote speakers, Tara Davis (*Twinning Project*) and Rosario Franco (*R. Franco Restoration, Inc.*) gave a phenomenal presentation on a cross-cultural restoration partnership rooted in both the Willamette Valley and the *Rio Laja* in Guanajuato, Mexico. We also hosted a networking happy hour following the event on the Kennedy School premises, which included three discussion

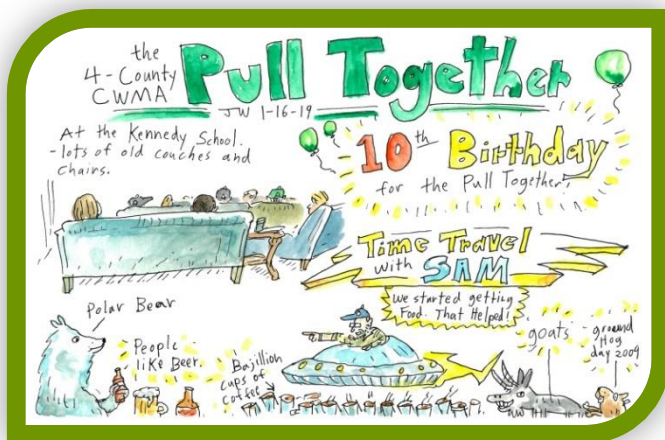
groups and over 30 participants who engaged deeper into topics highlighted from the event. The day of the event, our coordinator, Courtney, was able to donate approximately 100 pounds of extra food to local food pantries!

Currently, the Pull-Together Planning Committee has met four times in 2019 to plan next year's conference, scheduled for January 2020. For the upcoming event, the venue will remain at McMenamins Kennedy School, which will be the third year at this fabulous venue. We have a lineup of great speakers and registration for the event will open soon. In 2020,

the Pull Together will offer ODA, WSDA, and ISA recertification credits yet again, and provide plenty of tasty treats for attendees. Our committee members are working hard to "pull together" what we hope will be our best event yet!



Michelle Delepine honors Elaine Stewart for her dedicated work in the CWMA.



Pull Together comics created by the talented Jon Wagner of East Multnomah SWCD.

Field Day in East Multnomah County

The 4-County CWMA takes pride in its annual Field Day event as a means to showcase some of the amazing work of our devoted and hardworking partners. The event allows our partner

organizations to present projects to fellow CWMA members on the work they've been conducting and teaches the group about diverse habitats and ecosystems. And the best part is...*it's free!*

This year, our East Multnomah partners hosted Field Day in Gresham, and despite being the hottest day of the year, we still had 38 registrants sign up for the event. We learned about a variety of projects led by City of Gresham, East Multnomah Soil and Water Conservation District, Metro, and Friends of Nadaka Nature Park.

To start the day, Monica McAllister, former Nadaka Nature Park Coordinator, gave the group a thorough tour of Nadaka Nature Park, which is

comprised of a 10-acre natural area and a 2-acre neighborhood park, and taught us about the park's importance to the surrounding neighborhoods and communities. Afterwards, the group jetted to East Multnomah Soil and Water Conservation District's Headwaters Farm where Rowan Steele shared information on the farm's Incubator Program and Lucas Nipp discussed riparian vegetation restoration efforts conducted in the 14.5-acre Dianna Pope Natural Area. The group enjoyed a shaded lunch spot at Headwaters Farm, equipped with snacks, plenty of water, and an innovative boot-brush backpack sprayer supplied by West Multnomah Soil and Water Conservation District.

After lunch, the group moved along Johnson Creek to a 26-acre natural area managed by Metro, called Ambleside. From there, Julie Jacks and John Catena gave the group a tour of the floodplain and discussed Metro's riparian restoration efforts and infrastructure removal project along Johnson Creek. To close the day, the group made it to their final stop at Hogan Butte Nature Park, an urban public park on top of a forested butte managed by City of Gresham. Mike Wallace and Jeff Lesh shared their knowledge of invasive plant management in the forest and meadow restoration at the peak of the butte. Before taking off for the day, the group posed for a couple pictures in front of the sweeping views of Mount Hood, Mount Adams, and Mount St. Helens.



Ari DeMarco demonstrates an innovative boot brush backpack sprayer designed and created by Jeff Duval.



Field Day attendees walk through the meadow on top of Hogan Butte.

Portland Spring Home and Garden Show

For the past 7 years, the 4-County CWMA has been hosting an informational booth at the Portland Spring Home and Garden Show, formally known as the Yard, Garden, and Patio Show, to connect with landowners and local gardeners about noxious weed management. This year, the event was held at the Portland Expo Center from February 21st to February 24th, bringing in hundreds of vendors and thousands of attendees from all around the region.



Courtney Gattuso (CWMA Coordinator) and Michelle Delepine (WMSWCD) reveal the booth before the show.

Our amazing volunteers distributed plenty of native and invasive outreach material, including 175 CWMA Weed Fact Sheets, 94 invasive plant posters, 62 native plant posters, and 84 Oregon Garden Smart booklets! Throughout the course of the event, we had a total of 321 visitors stop by our booth to ask a variety of questions about invasive plant management and native plant alternatives for gardening. Our booth was equipped with lots of visual displays including the CWMA trifold tabletop display, our CWMA “Got Weeds?” banner, and various live weed specimens supplied by Clackamas Soil and Water Conservation District. The CWMA would like to

thank our devoted volunteers and City of Portland—Bureau of Environmental Services for sponsoring our booth over the years and allowing us to participate in this event!

Steering Committee

In 2019, the Steering Committee began a process of positioning the CWMA to better serve its partners in the coming years. Starting from ideas generated at our 2016 Steering retreat, the committee created and distributed a survey of possible CWMA priorities. The members’ responses to the survey reflected the wide range of work being done in our four counties, and gave valuable insight into how we can best support that work.

In addition to this strategic planning effort, the Steering Committee has updated our Memorandum of Understanding (MOU) and will be reaching out to partners in the coming year. The MOU, which is renewed every five years, is the primary organizational document of the CWMA. It reaffirms the intention of participating organizations to continue collaborating in the struggle against invasive plant species.

In 2020, the Steering Committee intends to complete our MOU renewals (and first-time signings!) and continue to work on long-term planning on how the CWMA can better serve its dedicated partner organizations.

Technical and Scientific Review Committee

The Technical and Scientific Review Committee continues to watch for new invasive species, discuss management concerns, and provide a variety of technical insights from across the Portland region. We also develop informational resources to assist land management professionals and cooperators in using the most effective, efficient, and least harmful management strategies.

In the past year we have:

- Reviewed new product information related to both organic and non-organic weed killers
- Held discussions on invasive plants such as puncturevine, flowering rush, and tree-of-heaven
- Discussed strategies for coping with invasive pests such as emerald ash borer, Japanese beetle, and spotted lanternfly

In 2019, we have begun reviewing another batch of ‘Best Management Practice’ sheets, with the goal of putting them on our website in 2020. We have also started reviewing Metro’s *Integrated Weed Maintenance Calendar*. The review should be complete, and the calendar available on our website, by spring treatment season.

Education and Outreach Committee

The Education and Outreach Committee coordinates outreach efforts among weeds practitioners from all four counties, co-creates outreach materials, and provides a space for sharing outreach techniques and learning from one another. The committee coordinated a booth at the Home and Garden Show, where weed experts from CWMA partner organizations handed out invasive weed fact sheets and gave one-on-one advice on weed removal tactics. The group planned and executed the annual Field Day, which took place in Gresham this year, showcasing a variety of restoration projects. Much of the planning for the annual Pull Together conference also happens in this committee. The committee continues to make updates to the 4-County CWMA website, looking for opportunities to make it more useful and accessible to weeds practitioners as well as the public.

Mapping and Data Committee

The Mapping and Data Committee seeks to identify and monitor invasive plant threats to the region through data analysis and mapping. The committee reconvened in September 2019 and re-affirmed its commitment to mapping “A-listed” plant species, reviewing new data collection and mapping technologies, and assisting with species prioritization analysis. In addition, Lindsey Wise of Oregon’s *iMapInvasives* gave an interactive demo of the many new improvements and features available in *iMapInvasives 3.0*, some of which reflect requests from our 2014 Committee letter to the national *iMap* office (e.g. streamlined display of data at various zoom levels, batch exports & customizable data downloading). By the end of 2019 the Committee will elect new leadership, refine its annual work plan, and publish the 2020 Call for Data (for new species of possible concern).

General Meetings

Our General Meetings allow our partners to discuss the latest news in weed management and share updates on their respective programs to keep our members engaged in regional weed removal efforts. Each meeting is hosted in a different county of the CWMA to allow equal participation amongst our diverse members. This year, we had a total of 89 attendees participate in our three General Meetings, hosted in Clark County, Washington County, and Clackamas County.

In March, our Clark County partners showcased their very impressive display of vegetation management equipment, including chainmail neck-protection hardhats, a native plant carrier, and the “ultimate spray truck”, featuring a 300-gallon tank and a handmade spray controller operated from the truck cab. Clackamas Soil and Water Conservation District

hosted their final General Meeting at the Abernethy Grange in Oregon City, before they move to their Beaver Creek Farm, where they shared their contractor training procedure, a collaborative hawkweed project in the Mt. Hood National Forest, and Metro’s management practices for rare and endangered plants. Our last General Meeting of the year was hosted in Washington County, by Tualatin Soil and Water Conservation District, where we learned about organic herbicides, garlic mustard detection dogs, and Oregon Department of Agriculture’s protocol for reporting noxious ornamental plants. We thoroughly enjoyed this year’s diverse presentations and look forward to the engaging topics our partners will provide for us in 2020.



Our Clark County partners showcase their innovative display of weed management equipment.

Accessibility

In the past year, the CWMA has been working on providing a more open and fluid means of communication for our partners who span many miles over the Portland metropolitan region. We recently upgraded our email listserv, hosted by GoogleGroups, which now allows our members to converse with each other directly and post related material to our 325 members. The new listserv allows members to ask questions, post research projects or job announcements, and keep up on CWMA updates, including meetings, events, and relevant information for new and current sponsors.

Another feature the CWMA has recently incorporated to aid communication for our geographically distant partners is our Bluetooth teleconference speaker. This portable device allows people to call remotely into our General Meetings, free of charge, through our audio conferencing call-in line, shared with the Columbia Gorge CWMA. Since its purchase in July, we’ve already had numerous partners utilize this new feature for meetings and presentations with great results.

Financial Update

The 4-County CWMA functions through the generous support of its member organizations. Member organizations provide both financial and volunteer contributions to support the goals and mission of the CWMA.

With the hiring of a new CWMA Coordinator, there has been an active effort to secure additional funding for CWMA activities. The goal of this effort has been to increase our coordinator from a quarter-time to half-time position. This effort has led to a notable increase in partner funding, but not quite enough to push us over the required threshold. As a result, the 4-County CWMA is exploring alternative methods to increase the capacity of the CWMA, by outsourcing some tasks and activities. The hope is that this approach will be temporary as we continue toward securing sufficient funding to increase coordinator time.

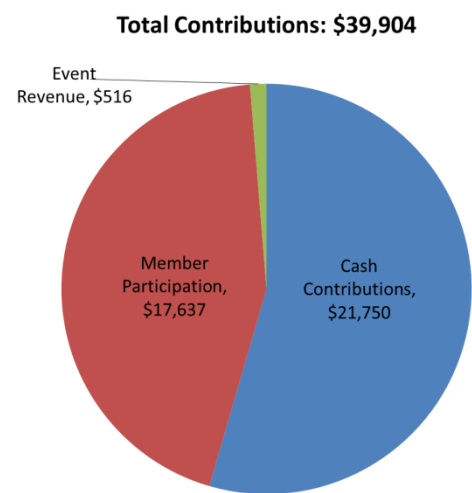
The monetary resources to fund our coordinator position and other CWMA-led activities and are currently provided by the following partner organizations:

- City of Portland- Bureau of Environmental Services
- Clackamas Soil and Water Conservation District
- Clark County Noxious Weed Control Program
- Clark Public Utilities
- Clean Water Services
- East Multnomah Soil and Water Conservation District
- Metro – Natural Areas Program
- North Clackamas Parks and Recreation District
- Tualatin Hills Parks and Recreation District
- Tualatin Soil and Water Conservation District
- West Multnomah Soil and Water Conservation District

The volunteer participation by CWMA members is also significant and diverse. In the past year, the 4-County CWMA documented more than 700 hours of volunteer staff for a multitude of members organizations. Many more volunteer hours spent in correspondence, planning events, projects, and activities on behalf of the CWMA went undocumented. The support for the CWMA by its members is significant and much appreciated!

The 4-County CWMA's annual Pull together event is organized to operate at cost. Despite the attempt to operate at cost, the Pull Together netted \$516 in revenue from meeting attendees in the last year. This event is held at cost to support our member organizations and to support the goal of improving invasive species management across the region.

Overall, the 4-County CWMA has a robust and diverse funding base. We are fortunate to have such broad regional support for this organization. Thank you to all of our contributing organizations and members...



We simply couldn't do it without you!

2019 Steering Committee Members

Steering Committee Chair

Mitch Bixby (*City of Portland—Bureau of Environmental Services*)

Steering Committee Vice-Chair

Aaron Shaw (*Tualatin Soil and Water Conservation District*)

Fiscal Administrator

Sam Leininger (*Clackamas Soil and Water Conservation District*)

At-Large Representatives

Multnomah County

Michelle Delepine (*West Multnomah Soil and Water Conservation District*)

Clark County

Justin Collell (*Clark County Noxious Weed Control Board*)

Clackamas County

Jeff Merrill (*Metro*)

Washington County

Aaron Shaw (*Tualatin Soil and Water Conservation District*)

Education and Outreach Committee Chair

Chelsea White-Brainard (*East Multnomah Soil and Water Conservation District*)

Technical and Scientific Review Committee Co-Chairs

Michelle Delepine (*West Multnomah Soil and Water Conservation District*)

Mitch Bixby (*City of Portland—Bureau of Environmental Services*)

Mapping and Data Committee Chair

Vacant

CWMA Coordinator

Courtney Gattuso (*Clackamas Soil and Water Conservation District*)

503-210-6015

info@4countycwma.org

PO Box 830, Beaver Creek, OR 97004

This report was collaboratively curated by the CWMA Steering Committee and Coordinator.