

# 4-County CWMA Mapping and Data Committee Update

1/29/25

Tyler Pedersen

Tualatin Soil & Water Conservation District

Committee Chair



# Mapping & Data (M&D) Committee



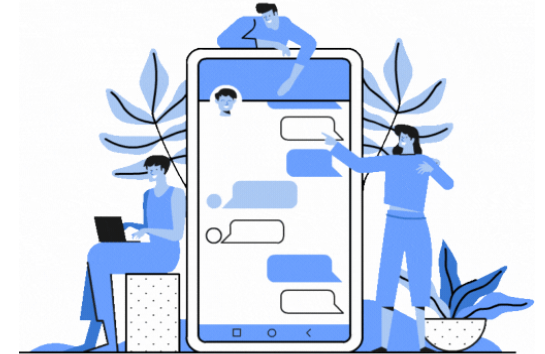
## Chair: Tyler Pedersen

- B.A., Ecology, University of Montana
- Invasive Species Program Coordinator at Tualatin SWCD
- 11.5+ years riparian and wetland restoration



## Vice-Chair: Eli Staggs

- B.S. Evergreen State College
- Invasive Species Technician at Tualatin SWCD



*#teamworkmakesthedreamwork*

**YOU!**

- Our active members and CWMA partners.
- *Join our 4-County CWMA email list to receive CWMA updates, regional weed information, and more! [CLICK HERE TO SUBSCRIBE!](#)*

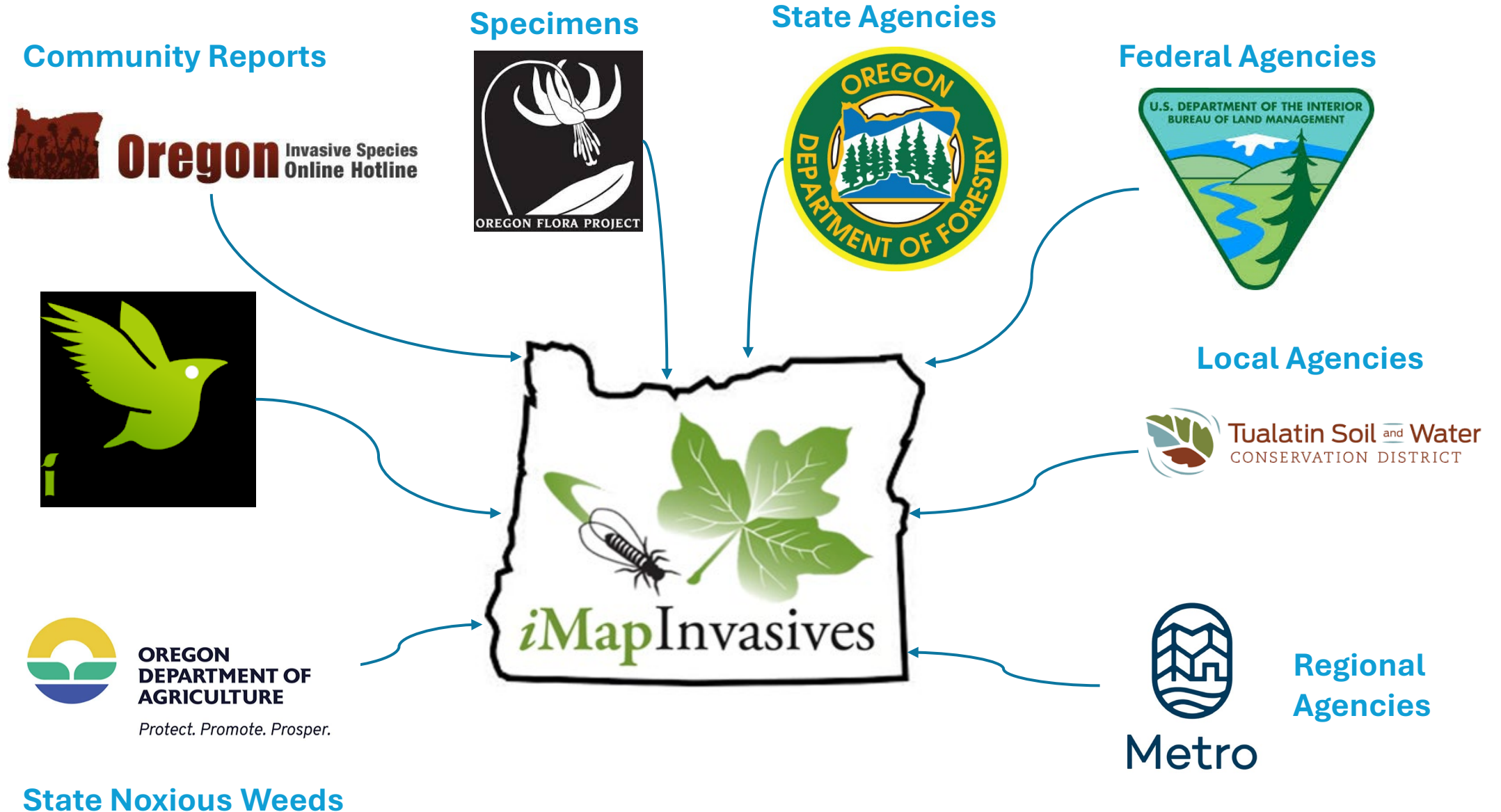
# Summary Slide

- iMapInvasives Plug
- iNaturalist Priority Species Project
- Distribution Maps
- SLF/TOH Mapping Exercise
- Hotline Highlight
- 2025 Work Plan
- February 12<sup>th</sup> Committee meeting

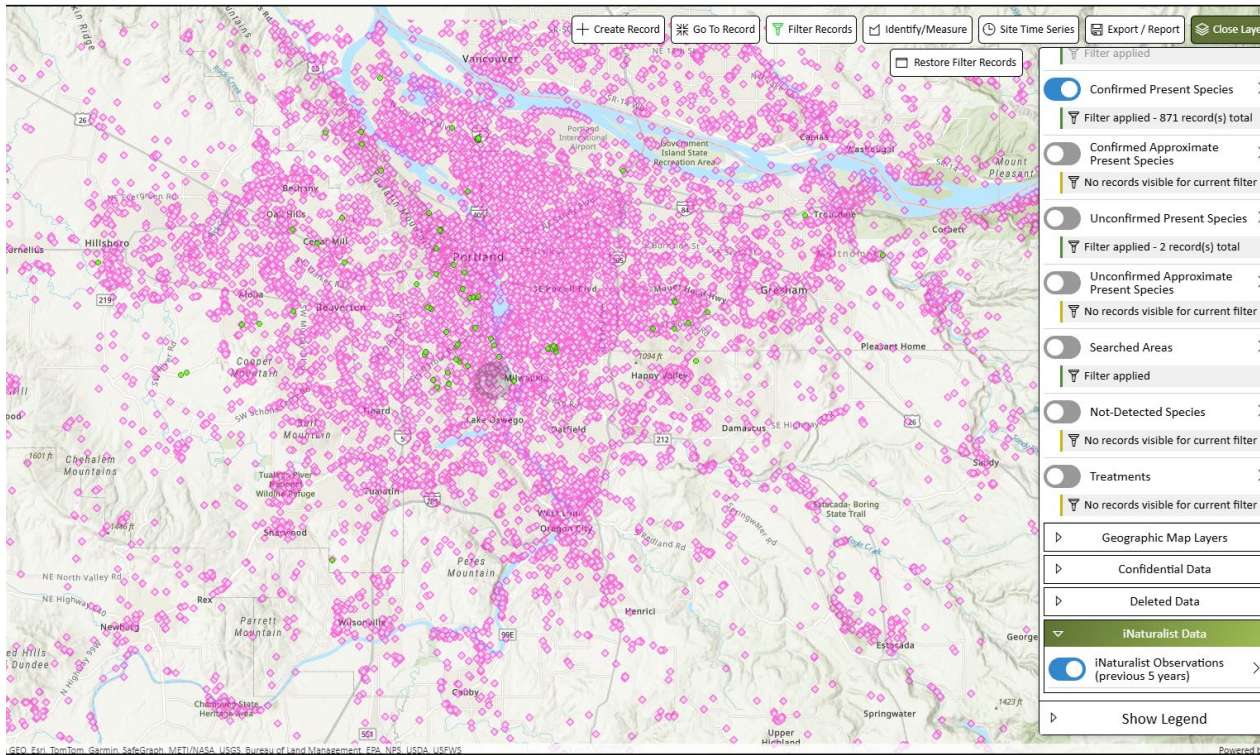




# iMapInvasives: Oregon's Invasive Species Data Hub



# iMap by the numbers



- Over **460,000** locations for **444** species
- **263** organizations in iMap
- **65** new iMap members added in 2024
- **Knotweed** most reported in 2024 (shown on the right)

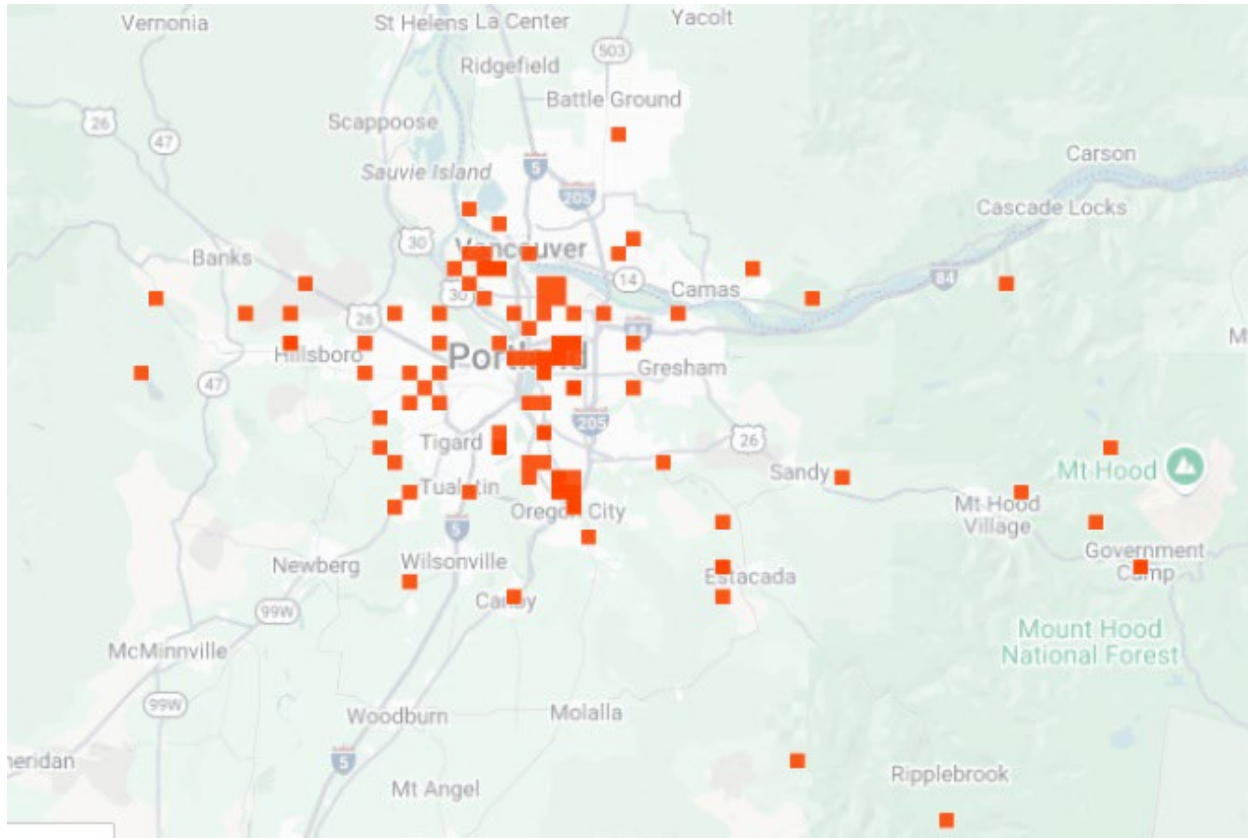
Toggleing on iNaturalist and iMap presence points is a convenient way to browse distributions!

# Sharing data with iMapInvasives

- Whatever format you're able to give!
  - Geodatabase
  - .csv
  - Technical assistance available
  - On paper napkin (mostly kidding)
- Confidentiality of data – Confidential Viewing Agreement for org admins
- Minimum data standards + many, many optional fields
  - Use for pesticide application record-keeping
  - Standards from CWMA fabulous
  - WeedMapper standards good too



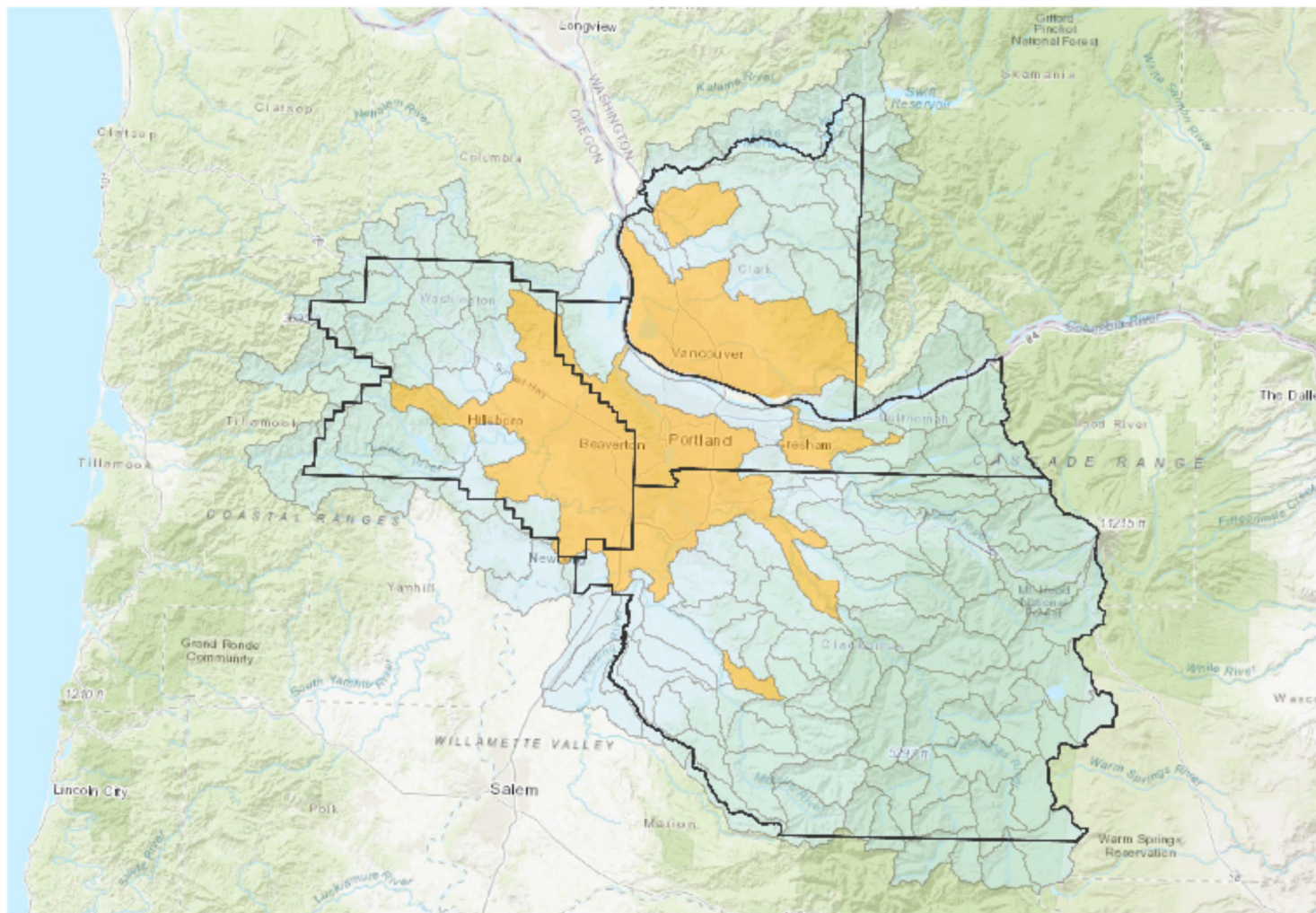
# iNaturalist Priority Species Project - 2024



Priority Species	# Reports
Common reed	1
Giant hogweed	1
Gorse	1
Heart podded hoary cress	1
Spanish broom	1
Leafy spurge	2
Goatsrue	3
Meadow hawkweed	3
Mouse-eared hawkweed	4
Orange hawkweed	4
Puncturevine	5
Milk thistle	7
Sulfur cinquefoil	14
Water primrose	17
Purpletop vervain	23
Oblong spurge	27
<b>Total</b>	<b>114</b>



# Distribution Maps



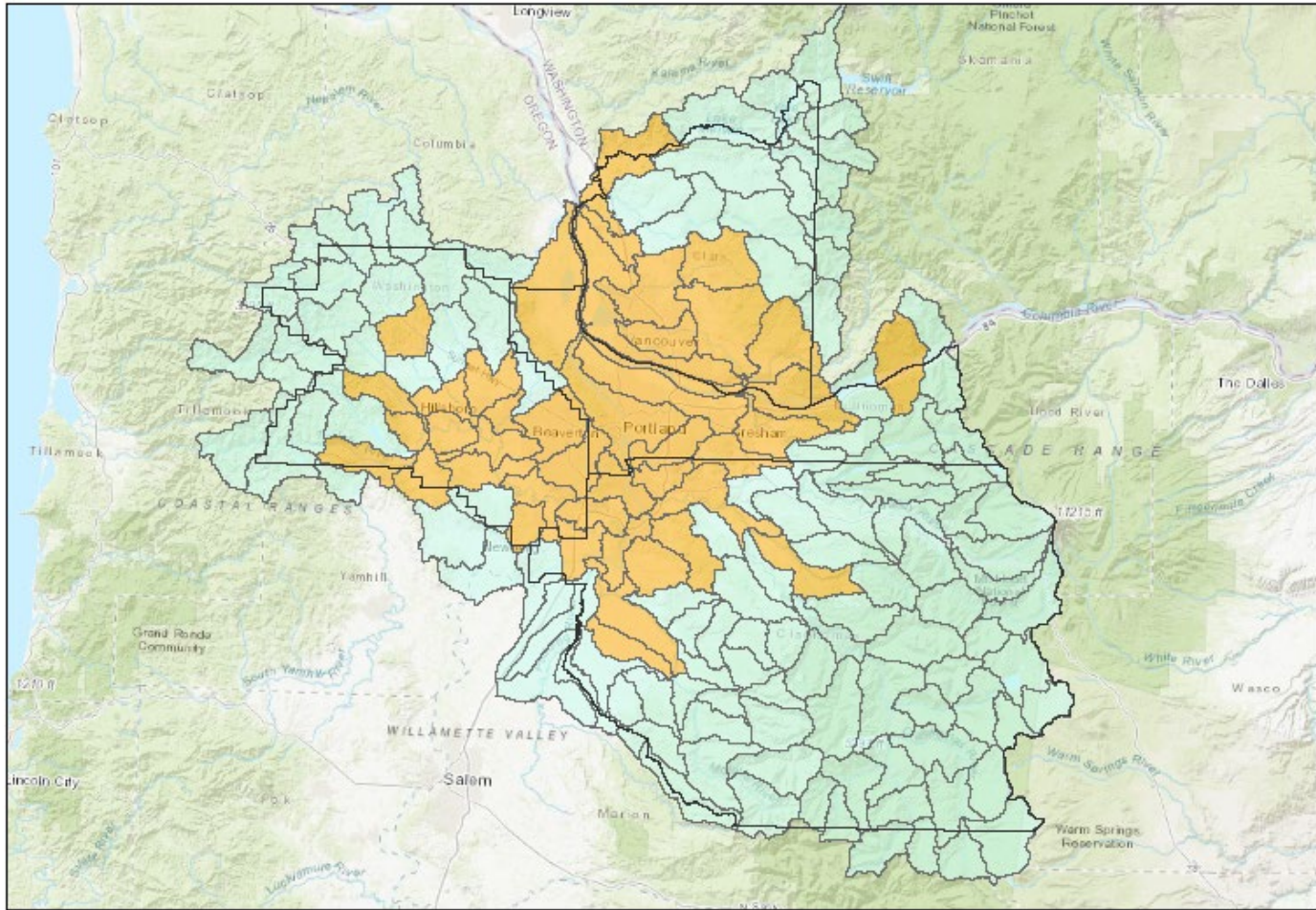
Oblong Spurge Presence - 2024  
4-County CWMA

County Boundary  
HUC12 Boundary

Oblong Spurge Presence





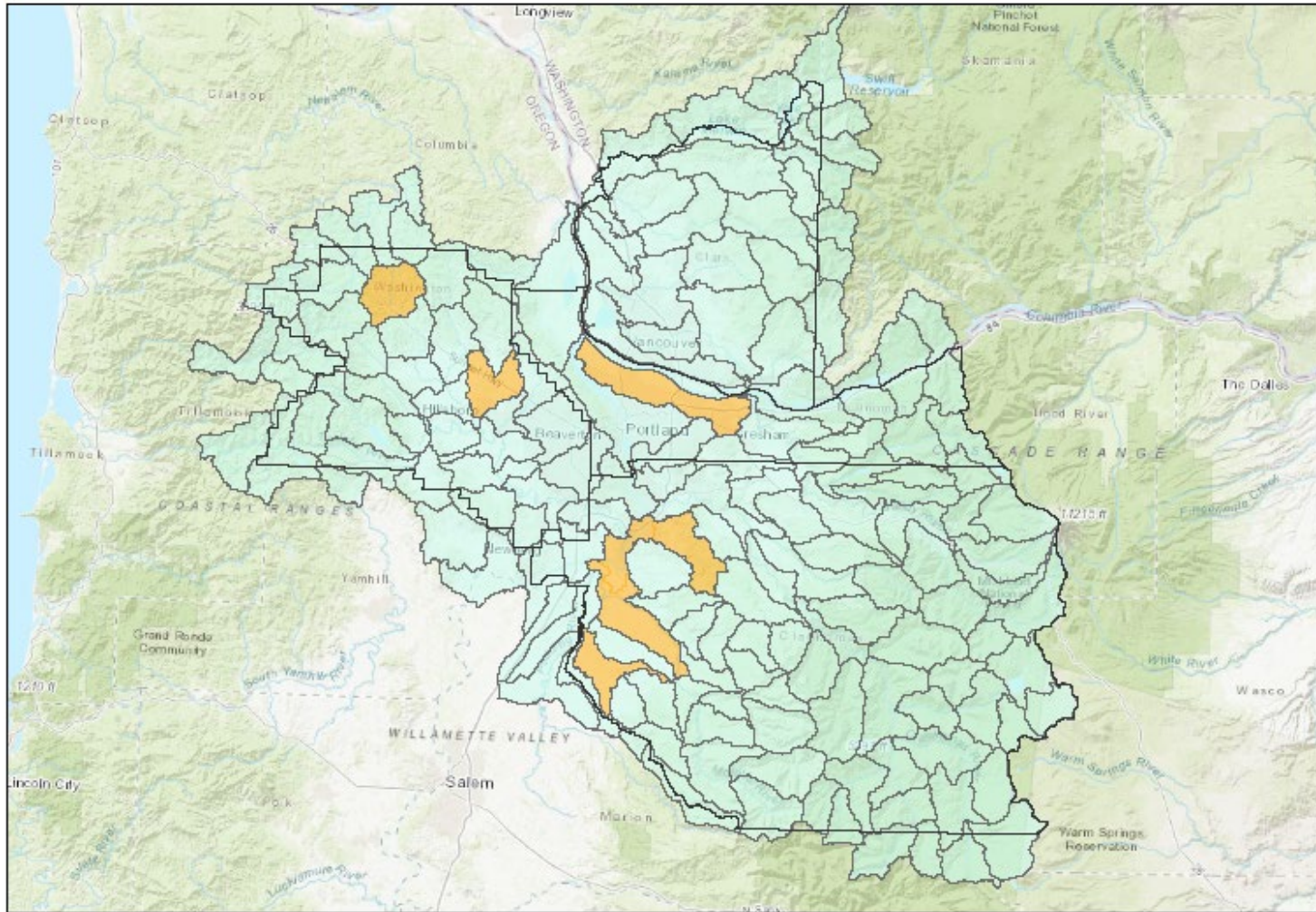


Tree of Heaven Presence - 2024  
4-County CWMA




- County Boundary
- HUC12 Boundary
- Tree of Heaven Presence







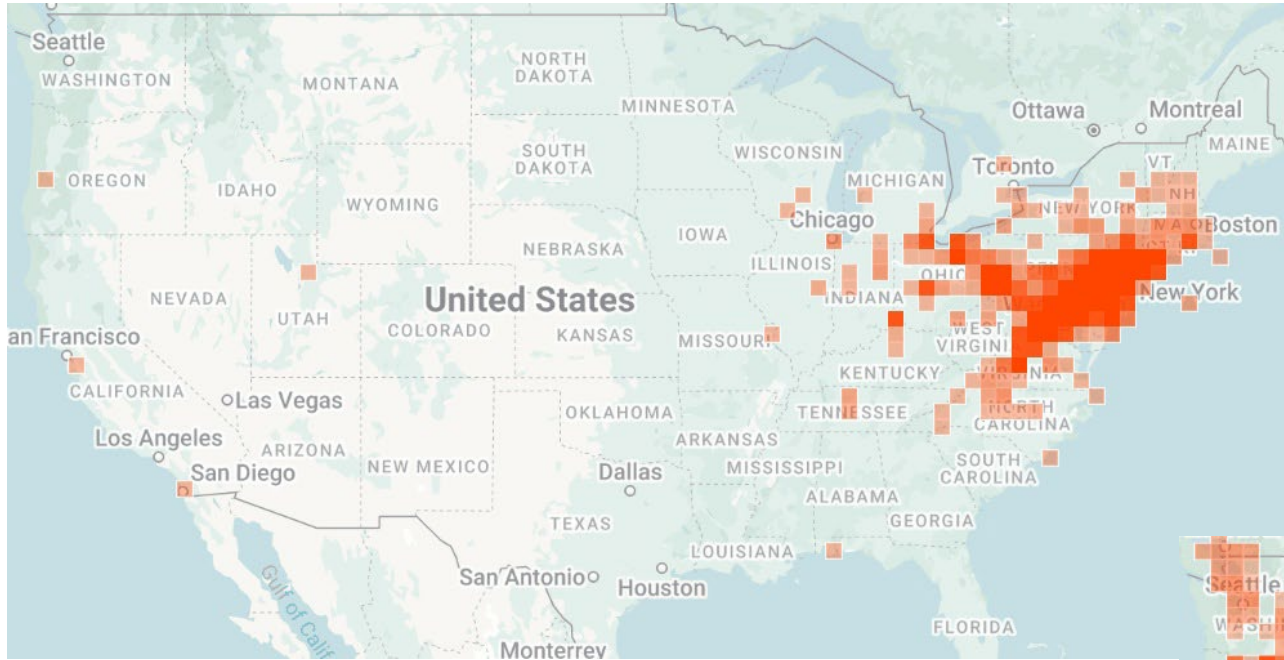
Puncturevine Presence - 2024  
4-County CWMA

-  County Boundary
-  HUC12 Boundary
-  Puncturevine Presence



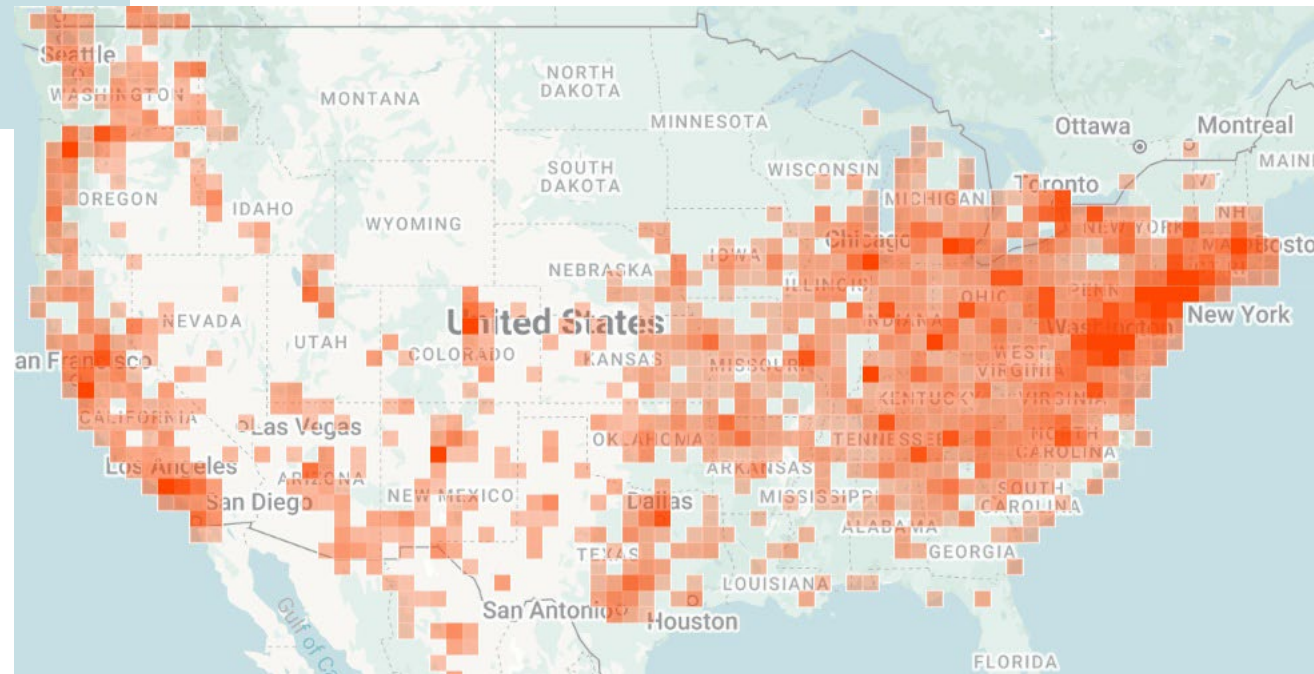


# Westward ho! TOH and SLF on the move.



iNaturalist Data - TOH

iNaturalist Data - SLF

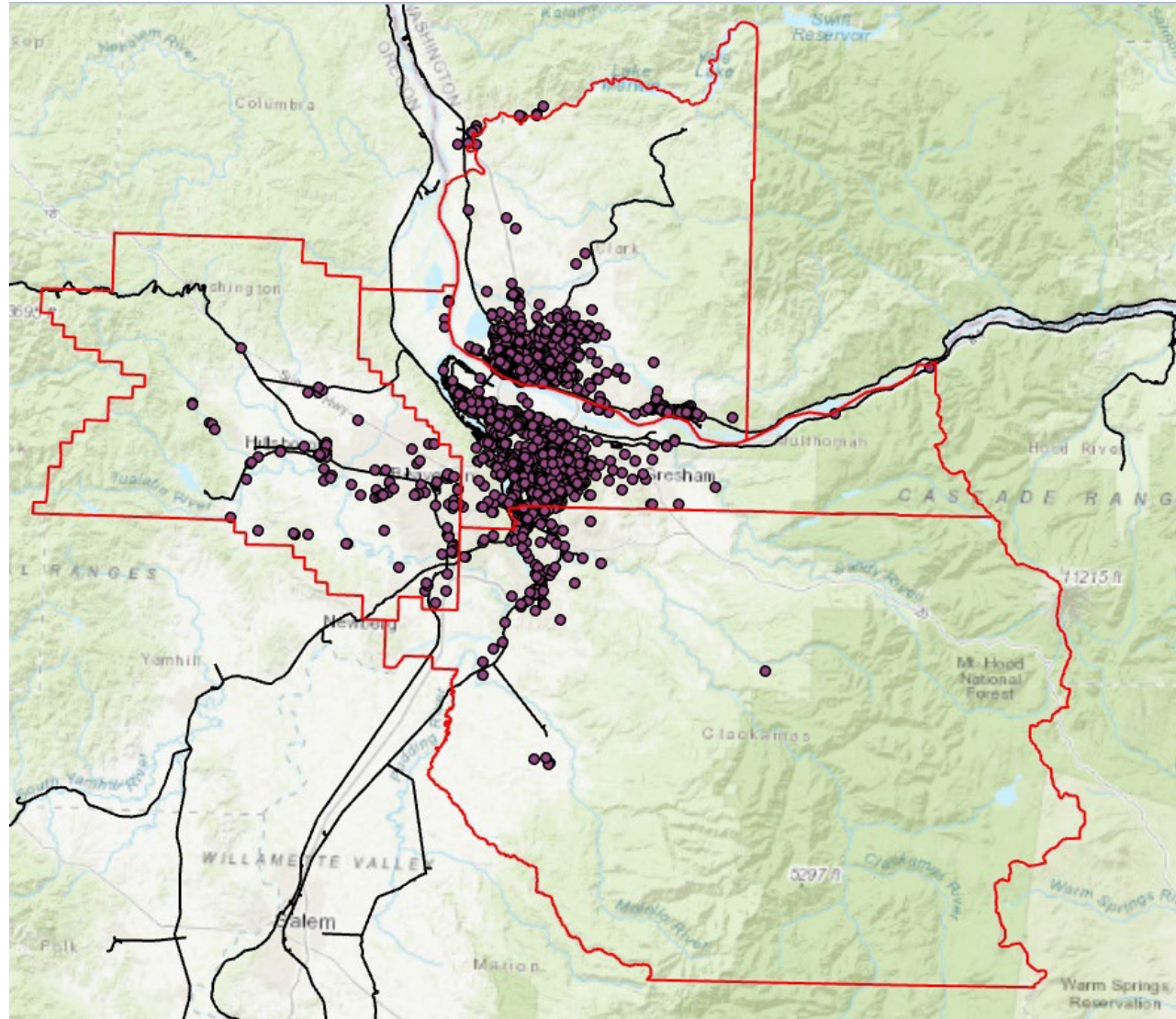


PC: USDA



# Tree of heaven Observation Map (4-County Area)

- 5,374 observations
  - Multnomah: 2687
  - Clark: 2230
  - Clackamas: 281
  - Washington: 157





# USDA Cropland CROS Data with Impacted Crop Types

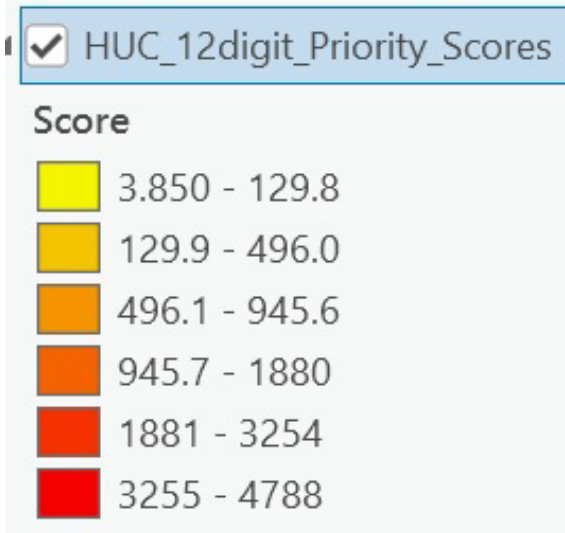
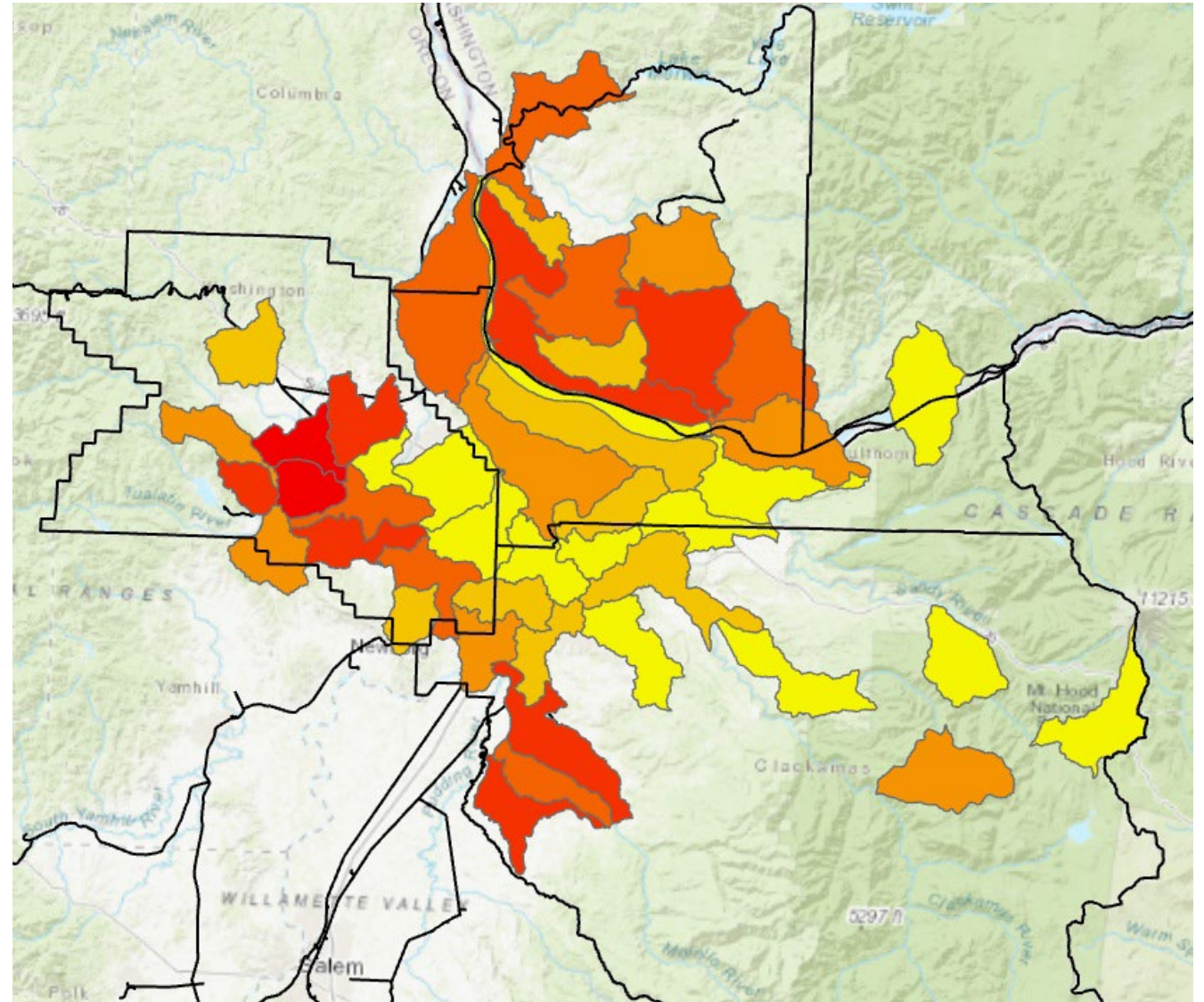
- Impacted Crop types used in analysis – Crop types with TOH present
  - Grapes
  - Hops
  - Apples
  - Pears
  - Plums
  - Blueberries
  - Walnuts
  - Christmas trees





# Combined Priority Score by HUC-12

- $(\# \text{ Tree of heaven} / 10) + (\text{Impacted Cropland Acres} \times 10)$
- Emphasizes Impacted Cropland over TOH Count





# Hotline Highlight



Across the State, Invasive species specialists from SWCDs, Weed districts, State and municipal agencies field reports from the Oregon Invasive Species Hotline. Members of the 4-County CWMA contribute to the hotline by responding to concerned community members with helpful information about controlling weeds on their property. In some cases, high-alert priority invasives pop up and managers can address the problem directly.

For example, Mitch Bixby with the City of Portland Bureau of Environmental Services responds to many hotline reports. Some have included reports of Giant Hogweed in a neighborhood of Portland. In 2012, a report was made when a 3-year-old went to the Emergency Room because of this highly toxic invasive species. Mitch responded quickly to this report and treated the population .

## Hotline Reports Within Four County CWMA Aquatic and Terrestrial Plants





# 2025 Work Plan and Next Meeting

- If you are interested, please join us at our next committee meeting on Go-To-Meeting from 9 to 9:50 am on Wednesday, 2/12. We will be reviewing and finalizing our 2025 Work Plan.
- You can reach us at [tyler.pedersen@tualatinswcd.org](mailto:tyler.pedersen@tualatinswcd.org) or [eli.staggs@tualatinswcd.org](mailto:eli.staggs@tualatinswcd.org) if you want to be added to the committee or have mapping and data related questions.
- THANK YOU!