

Mapping & Data Committee

Pull Together Update 1/17/24

Tyler Pedersen, Invasive Species Program Coordinator, Tualatin SWCD (Chair)

Eli Staggs, Invasive Species Technician, Tualatin SWCD (Vice-Chair)



4-COUNTY
COOPERATIVE WEED
MANAGEMENT AREA

Mapping & Data (M&D) Committee



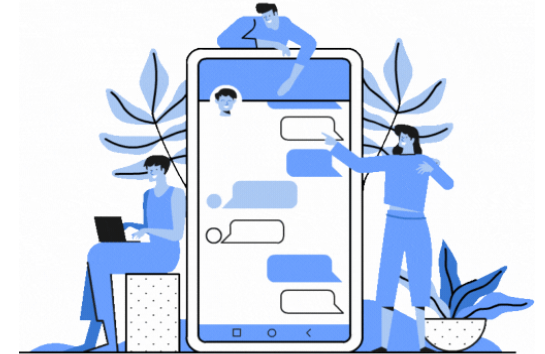
Chair: Tyler Pedersen

- B.A., Ecology, University of Montana
- Invasive Species Program Coordinator at Tualatin SWCD
- 11.5+ years riparian and wetland restoration



Vice-Chair: Eli Staggs

- B.S. Evergreen State College
- Invasive Species Technician at Tualatin SWCD



#teamworkmakesthedreamwork

YOU!

- Our active members and CWMA partners.
- *Join our 4-County CWMA email list to receive CWMA updates, regional weed information, and more! [CLICK HERE TO SUBSCRIBE!](#)*

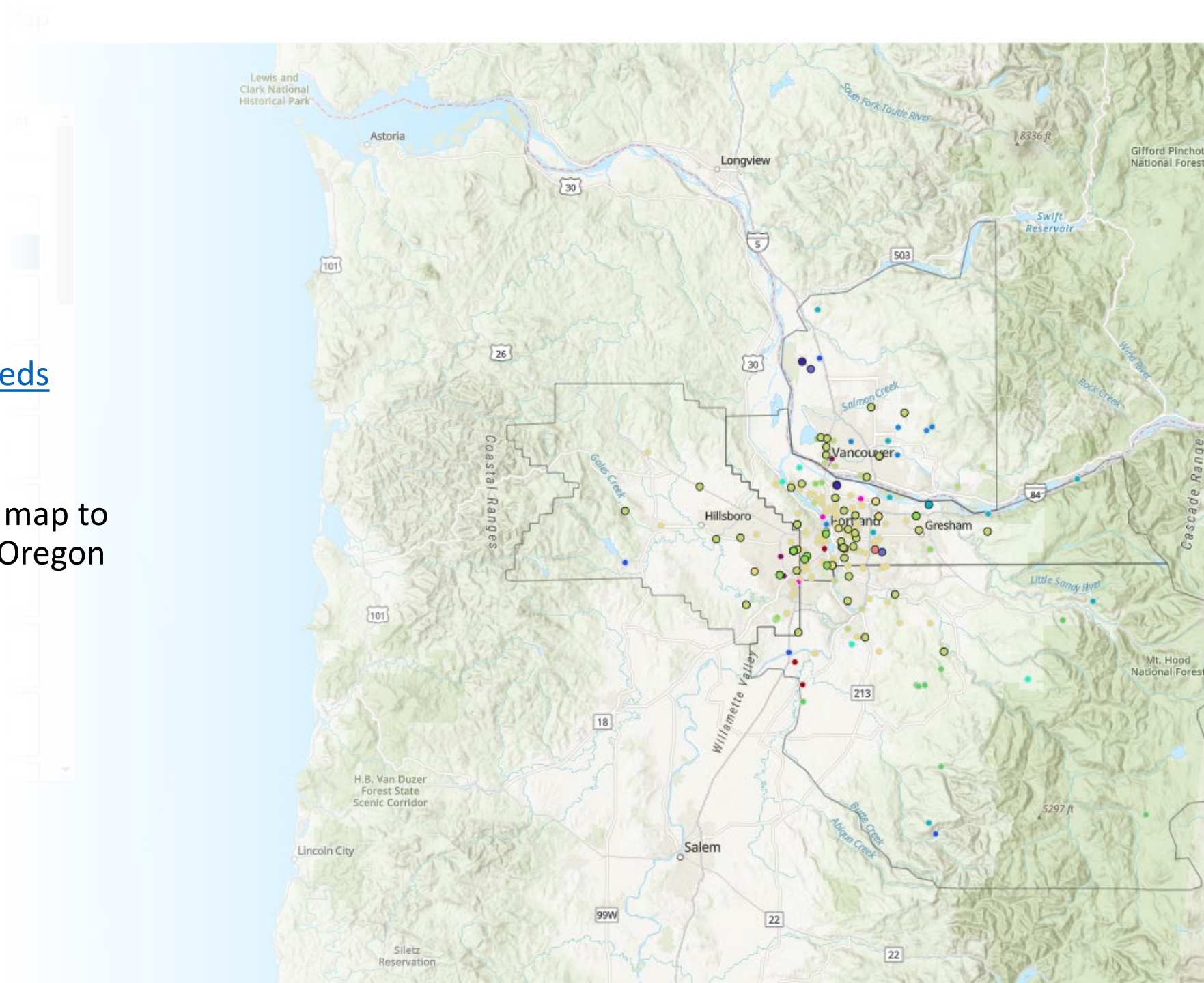
iNaturalist Projects

- A-listed Species Reported in 2023:

Common name	Species	# of observations	Clark	Multnomah	Clackamas	Washington
Eggleaf spurge	<i>Euphorbia oblongata</i>	12	0	9	3	0
Floating Water Primrose	<i>Ludwigia peploides</i>	10	0	6	4	0
Sulfur cinquefoil	<i>Potentilla recta</i>	9	2	3	2	2
Milk thistle	<i>Silybum marianum</i>	6	2	3	1	0
Giant hogweed	<i>Heracleum mantegazzianum</i>	1	0	1	0	0
Gorse	<i>Ulex europaeus</i>	1	0	0	1	0
New England Hawkweed	<i>Hieracium sabaudum</i>	1	0	1	0	0
Orange Hawkweed	<i>Pilosella aurantiaca</i>	1	0	0	1	0
Reed meadowgrass	<i>Glyceria maxima</i>	1	1	0	0	0
Total		42	5	23	12	2

Current Priority Map

- [CWMA Public Priority Weeds Map \(arcgis.com\)](https://arcgis.com)
- Actively updating priority map to include all Washington and Oregon listed invasive plant species



Updated Data Standards

Invasive Plant Data Standards

County CWMA, Mapping & Data Subcommittee

Introduction

The goal of data standards is to increase the *collective* utility of invasive plant data. The 4 County CWMA uses data standards that are in line with the rationale and purpose of the data standards developed by the North American Invasive Species Management Association (NAISMA). NAISMA describes their rationale:

These standards are intended to be compatible with most existing invasive species inventories. They are not intended to discourage other organizations from collecting additional information on invasive infestations. By using these minimum standards, information collected can be incorporated with inventories serving other purposes, thereby widening the usefulness of the collected information. These standards are intended to be as user friendly as possible, while still providing information essential at every level of invasive species management, from the site of the infestation to regional, national, and international levels.

The standards described in this document are designed to serve the needs of regional and international invasive species databases including iMapInvasives, Oregon Department of Agriculture's [WeedMapper](#), and [EDDMapS](#).

Data Fields

Data Field Name	Required or Optional
Universally Unique Identifier	Required
Observation Date	Required
Observer Name	Required
Data Source	Required
Scientific Name	Required
Common Name	Required
Taxonomic Serial Number	Optional
State	Required
County	Required
Latitude	Required
Longitude	Required
Datum	Required
Horizontal Accuracy	Optional
Location Description	Optional
Patch Size	Required
Percent Cover	Optional
Photographs	Optional
Distribution	Optional
Phenology	Optional
Comments	Optional
Number of Plants	Optional
Creekside	Optional
Treatment Within 3 ft of Creek	Optional
Linear Miles Treated Within 3ft of Creek	Optional
In-Water Treatment Area	Optional
Presence of Biological Controls	Optional
Biological Control Species	Optional
Control Type	Optional
Has This Population Been Previously Reported to WeedMapper ?	Optional

Website Redesign Updates



[Home](#) > [Priority Weed Coordination](#) > [Data Collection](#)

Effective invasive species management requires accurate identification and detailed control information. Collected data is integrated into regional databases to better inform management decisions across jurisdictions.

The 4-County CWMA has created a set of data collection standards that supports regional invasive plant management.

Download the [4-County CWMA Invasive Plant Data Standards](#) (updated 2023)

- Preparing for post field-season data sharing.
- Results of questionnaire will help guide us to assist with getting your data into plant inventory databases.
- <https://forms.gle/39QBGNxx2yrxxurf9>

CWMA Data Sharing Questionnaire

Form description

Email *

Valid email

This form is collecting emails. [Change settings](#)

Name:

Short answer text

Affiliated Organization:

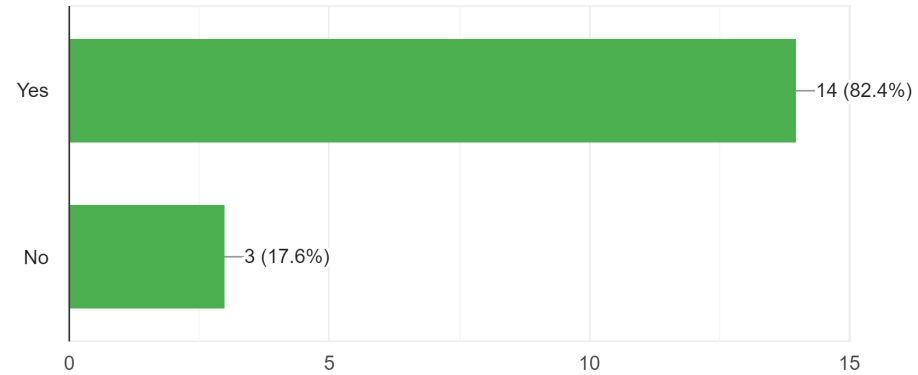
Please write out the organizations name without acronyms.

Short answer text

Questionnaire Responses

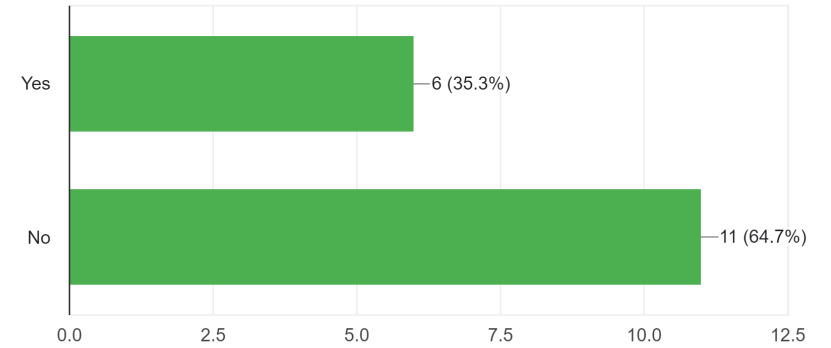
Did your organization collect Invasive Species Data in 2023?

17 responses



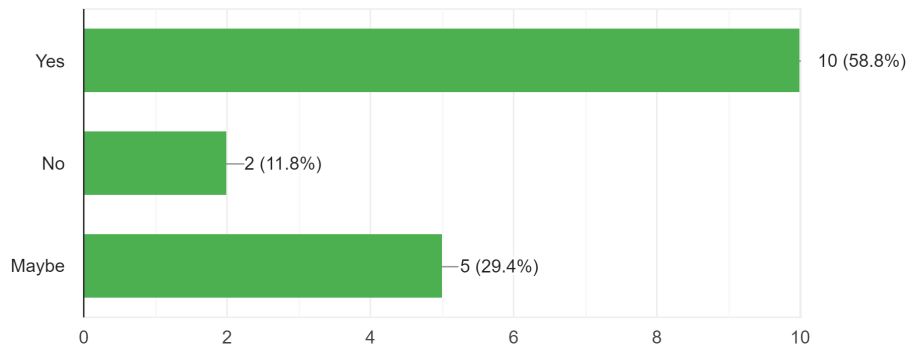
Would you like to arrange a one-on-one meeting with the Mapping and Data Committee to assist you with sharing data?

17 responses



Are you interested in sharing your data with the 4 County CWMA?

17 responses



Looking ahead

- 2024 Work Plan Development.
- Provide one-on-one assistance with standardized data collection template as needed.
- Coordinating with partners who would like to share data.
- Elections for Mapping and Data Committee Chair and Vice Chair at 2/14/24 meeting. Remote Go To Meeting from 8:30 to 9:50 am.

Please check out our M&D webpage at <https://4countycwma.org/>.

We update it regularly!



PRIORITY WEED COORDINATION

Data Collection

Home > Priority Weed Coordination > Data Collection

Effective invasive species management requires accurate identification and detailed control information. Collected data is integrated into regional databases to better inform management decisions across jurisdictions.

The 4-County CWMA has created a set of data collection standards that supports regional invasive plant management.

Download the [4-County CWMA Invasive Plant Data Standards](#) (updated 2023)

We're always just a quick e-mail or virtual meeting away if you ever want to talk maps, data, etc.!

Tyler Pedersen, Chair: tyler.pedersen@tualatinswcd.org

Eli Staggs, Vice-Chair: eli.staggs@tualatinswcd.org