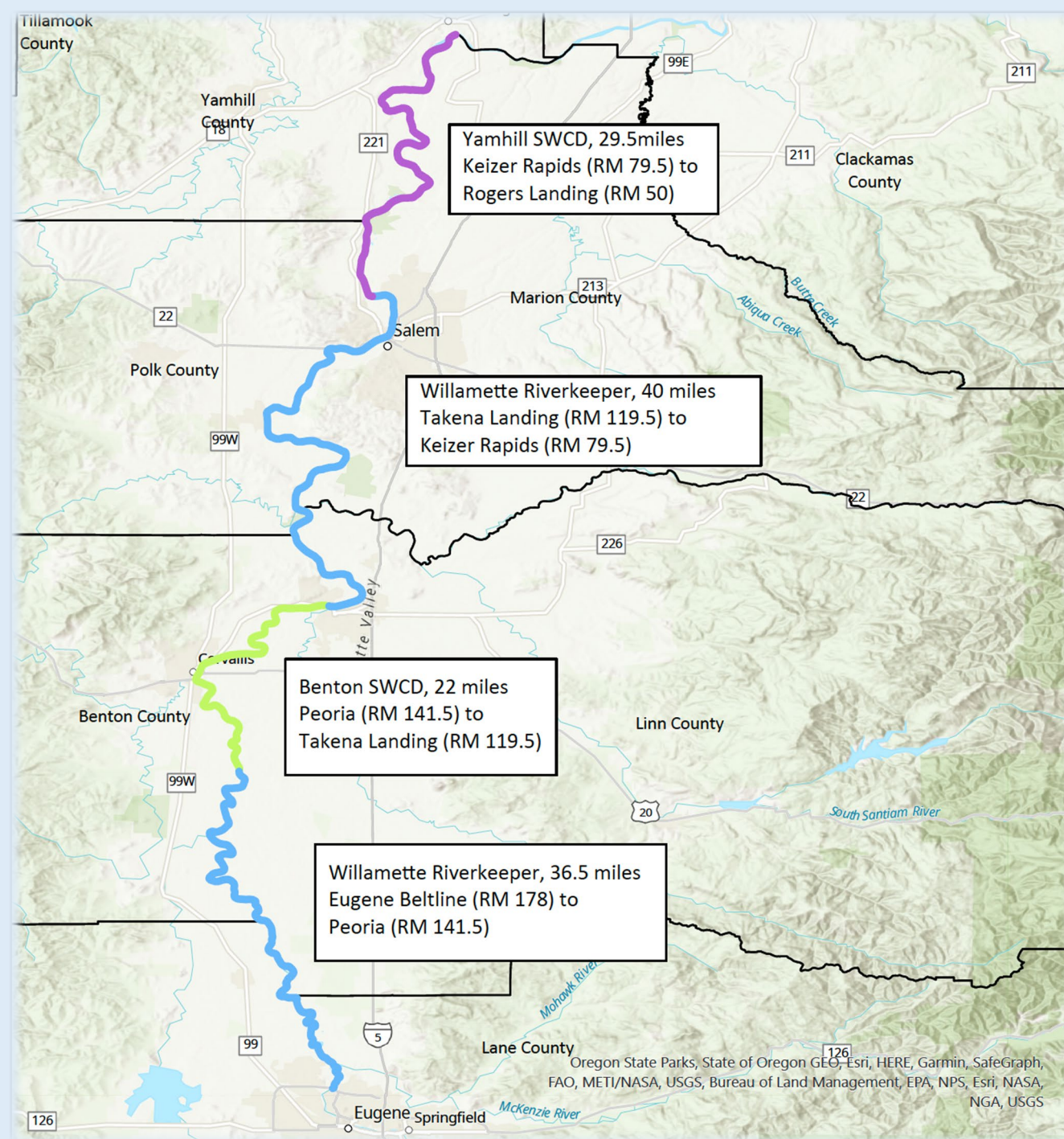


# Managing Aquatic Invasive Species on the Willamette River

Vanessa Youngblood, Willamette Riverkeeper



A collaborative project  
with  
multiple partners  
across  
six counties



The image is a vertical split. The left side shows a pond with blue water and numerous green lily pads. A single yellow flower is visible among the lily pads. The right side shows a close-up of a plant with large green leaves and a cluster of bright yellow flowers. The background of the right side is a gravelly bank.

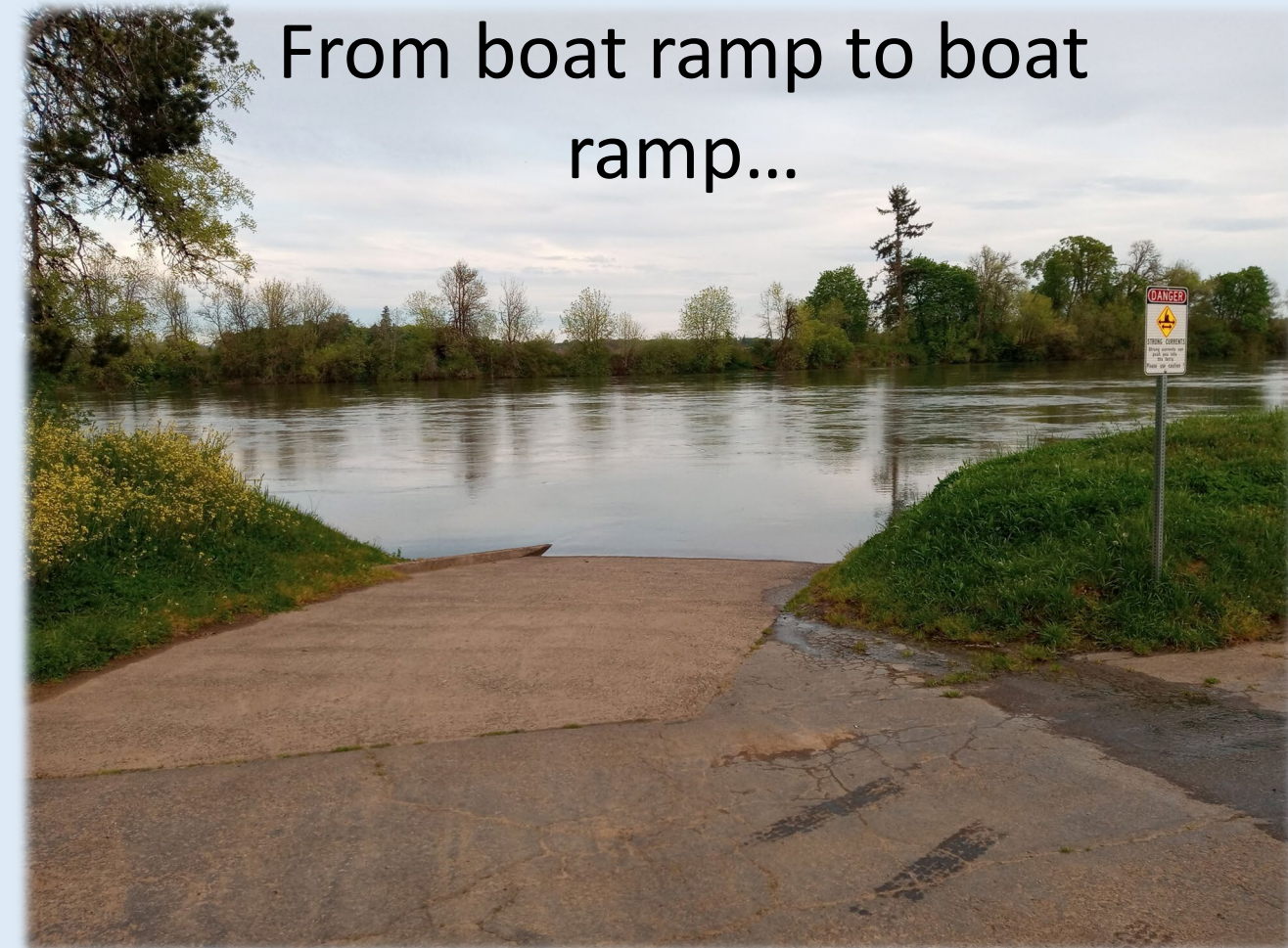
Target Species:  
One yellow flower to the next...



Methods of Survey & Treatment

# The Challenges of Surveying on the River

From boat ramp to boat ramp...



## AIS Survey Schedule 2024

### 1) Beltline West (RM 178) to Marshall Island (RM 167.75) [4 IRM staff]

*On this stretch we will work with ODA for treatment of Dodson Slough. WR will focus on two other yellow floating heart (YFH) known locations (with several patches) and explore any new possible populations.*

**Willamette Riverkeeper with IRM for treatments**

10.25 miles

### 2) Marshall Island (RM 167.75) to McCartney Park (RM 156.5) [4 IRM staff]

*This stretch will focus on five YFH known patches and explore any new possible populations.*

**Willamette Riverkeeper with IRM for treatments**

11.25 miles

### 3) McCartney Park (156.5) to Sam Daws - Yellow House (RM 147ish) [4 IRM staff]

*This stretch will focus on four YFH known locations (with several patches in two areas). One being the **new** largest patch by coverage of YFH found and explore any new possible populations.*

**Willamette Riverkeeper with IRM for treatments**

9.5 miles

### 4) Sam Daws - Yellow House (RM 147ish) to Peoria (RM 141.5) [4 IRM staff]

*This stretch will focus on ten YFH known locations (with several patches in Sam Daws Bend aka Old Long Tom channel) and will explore any new possible populations. Shorter paddle to allow for more surveying and treatment time.*

**Willamette Riverkeeper with IRM for treatments**

5.5 miles

### 5) Peoria (RM 141.5) to Michael's Landing (RM 131)

*This stretch will focus on seven YFH known patches (with multiple spots in the channel across from Bear Island) and one new location found in 2023 just upstream from Crystal Lake Boat Ramp. We will also explore any new possible populations.*

**Benton SWCD (a partnered grant proposal)**

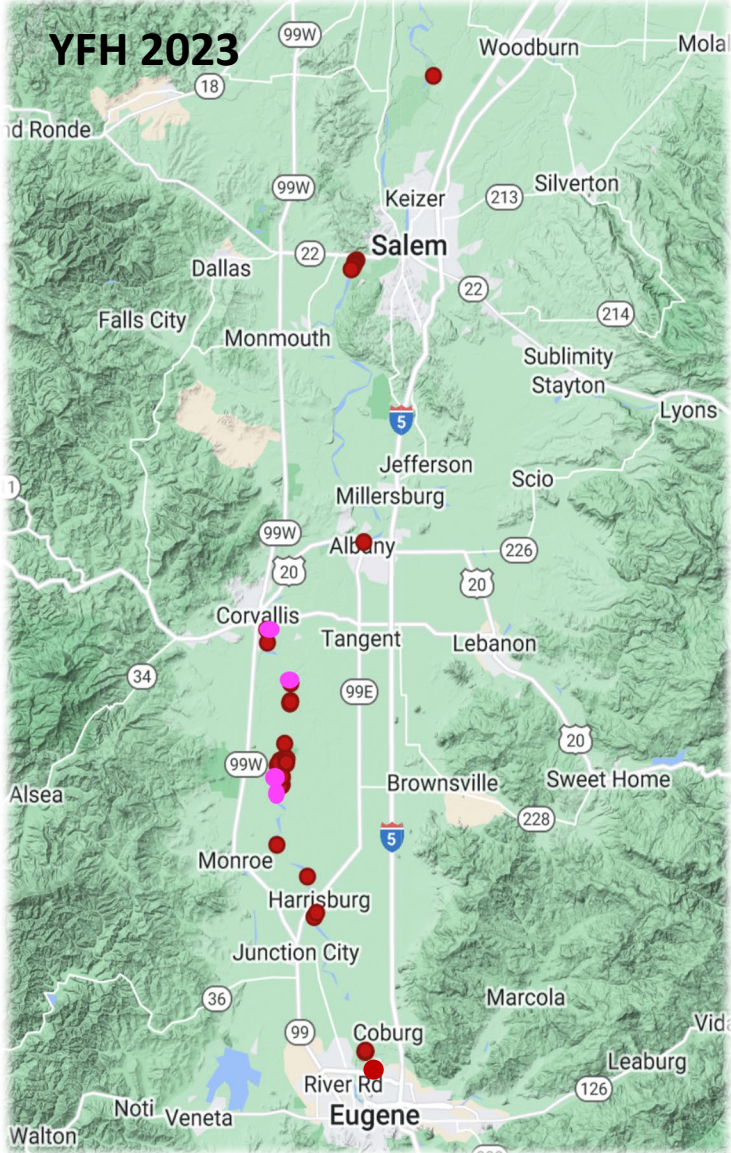
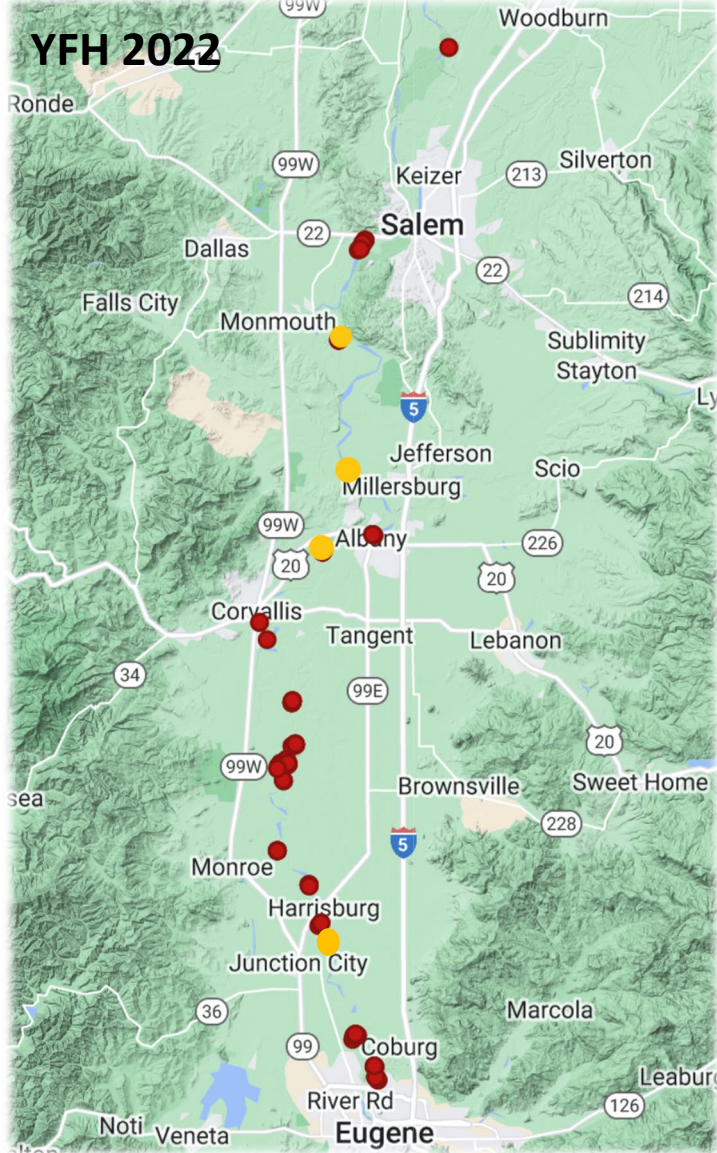
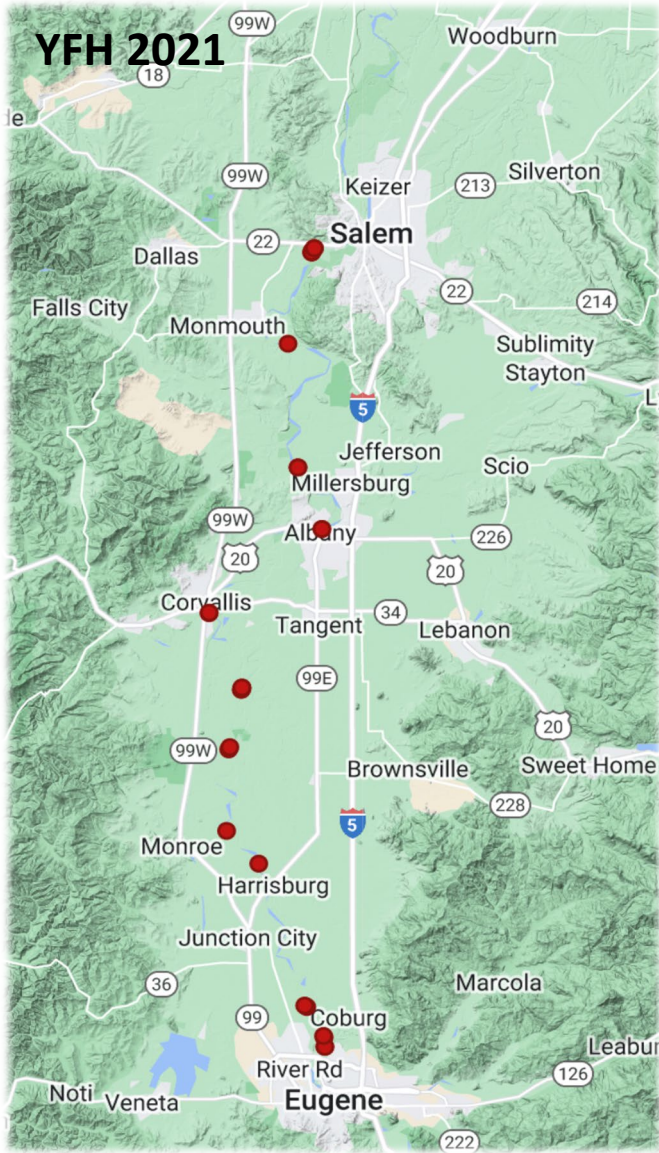
10.5 Miles

### 6) Michael's Landing (RM 131) to Tadena Landing (RM 119.5)

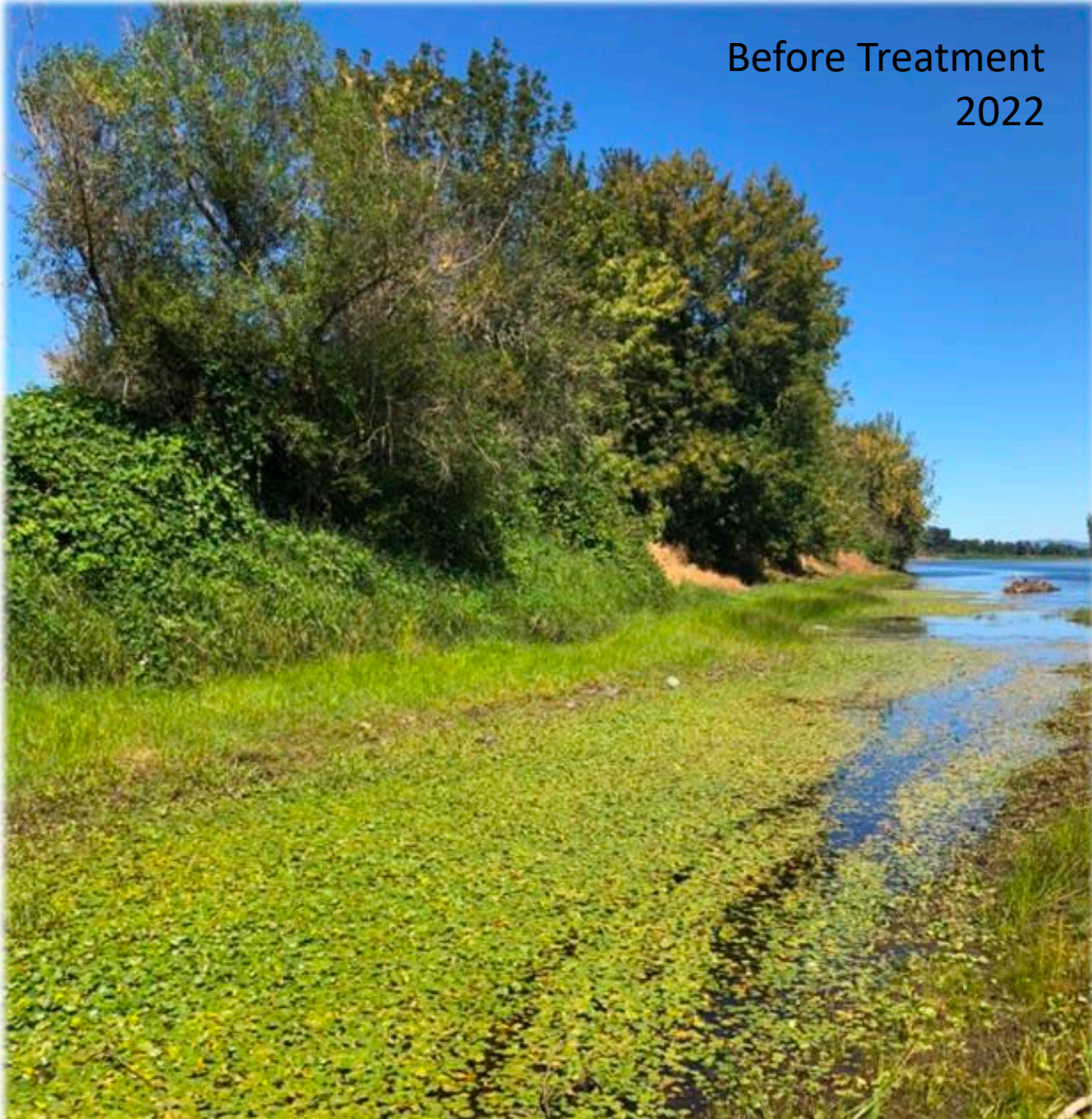
*This stretch will focus on two YFH known patches (one being at Dragon Fly Cove and one right at Tadena Landing) and we will also explore any new possible populations.*

**Benton SWCD (a partnered grant proposal)**

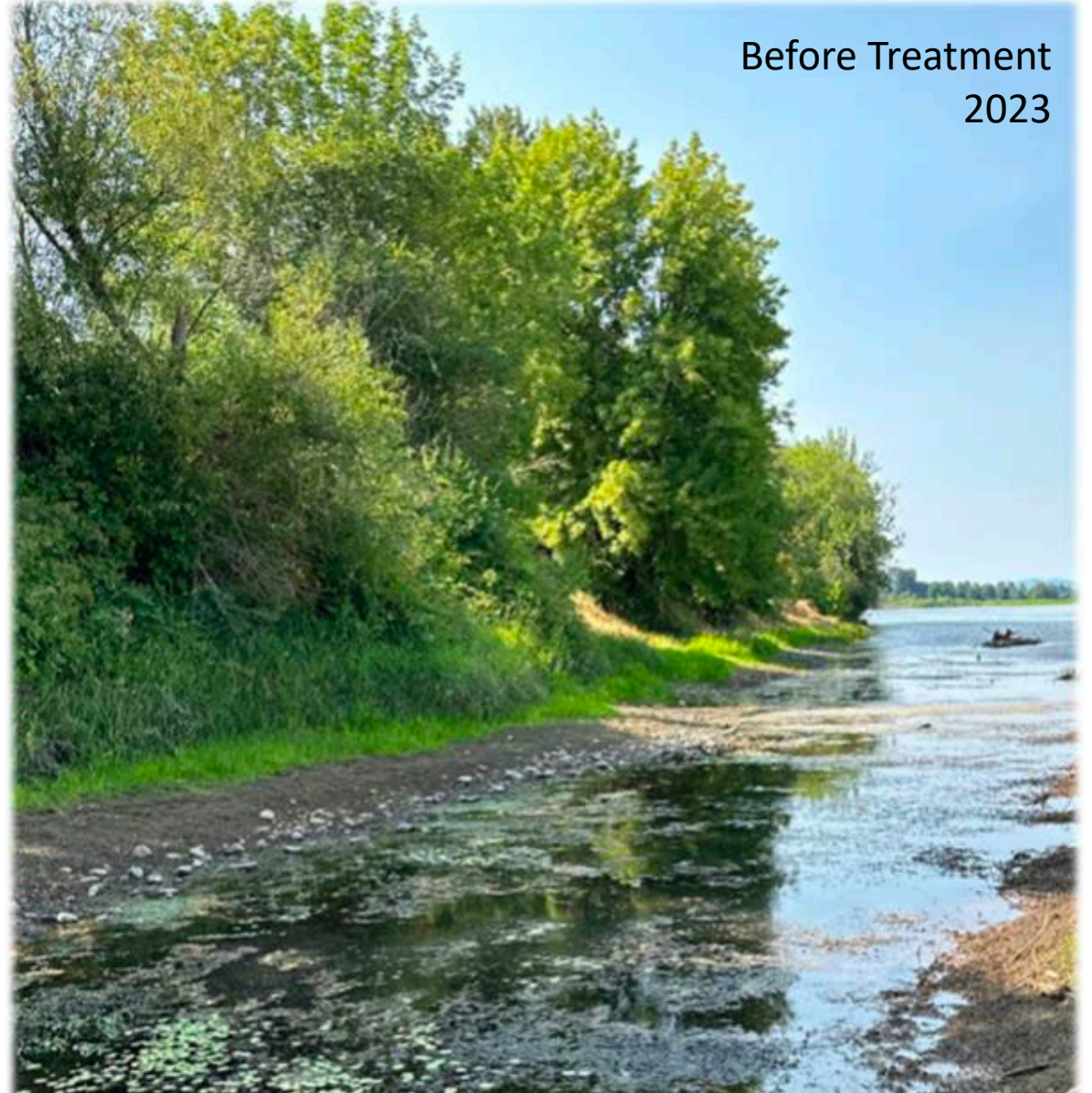
11.5 miles



Before Treatment  
2022



Before Treatment  
2023









New Patterns of Growth...

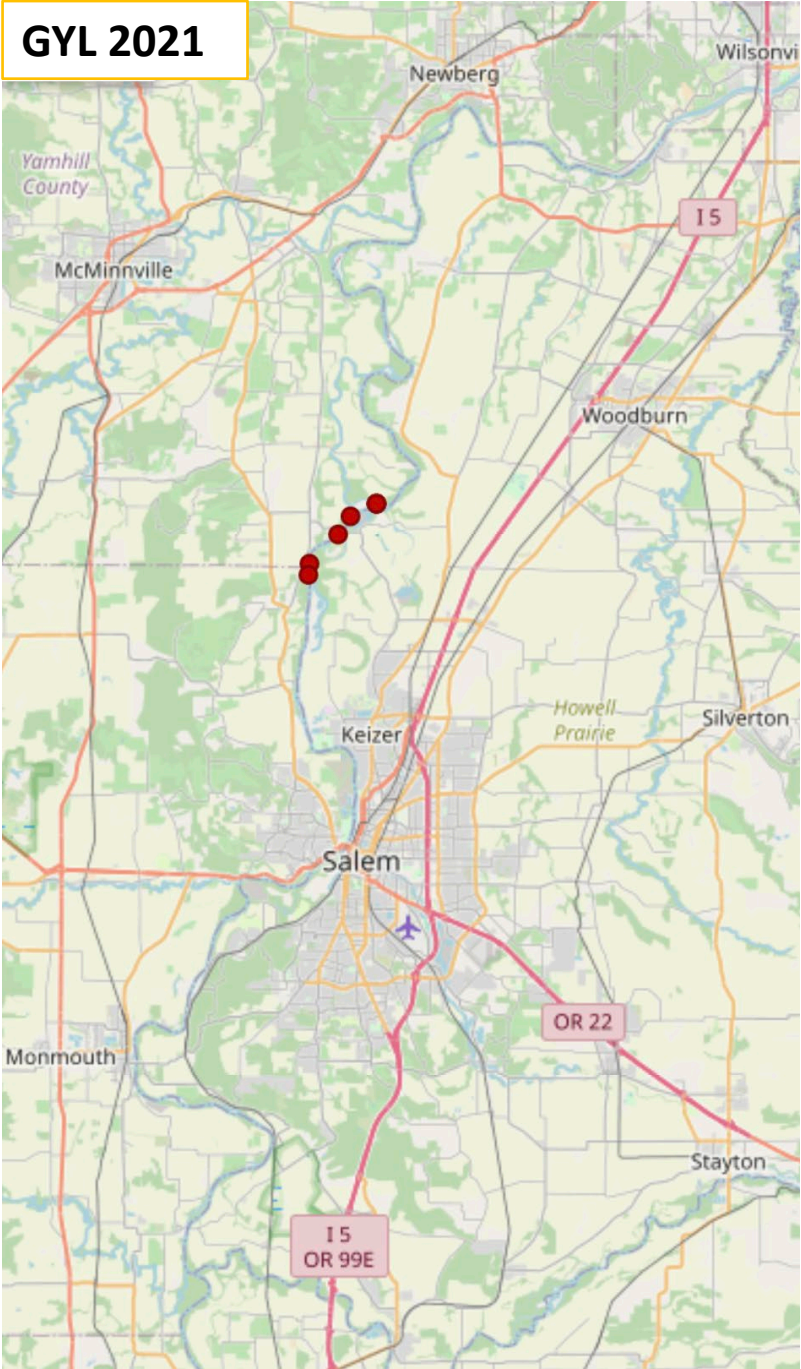


# Garden Yellow Loosestrife

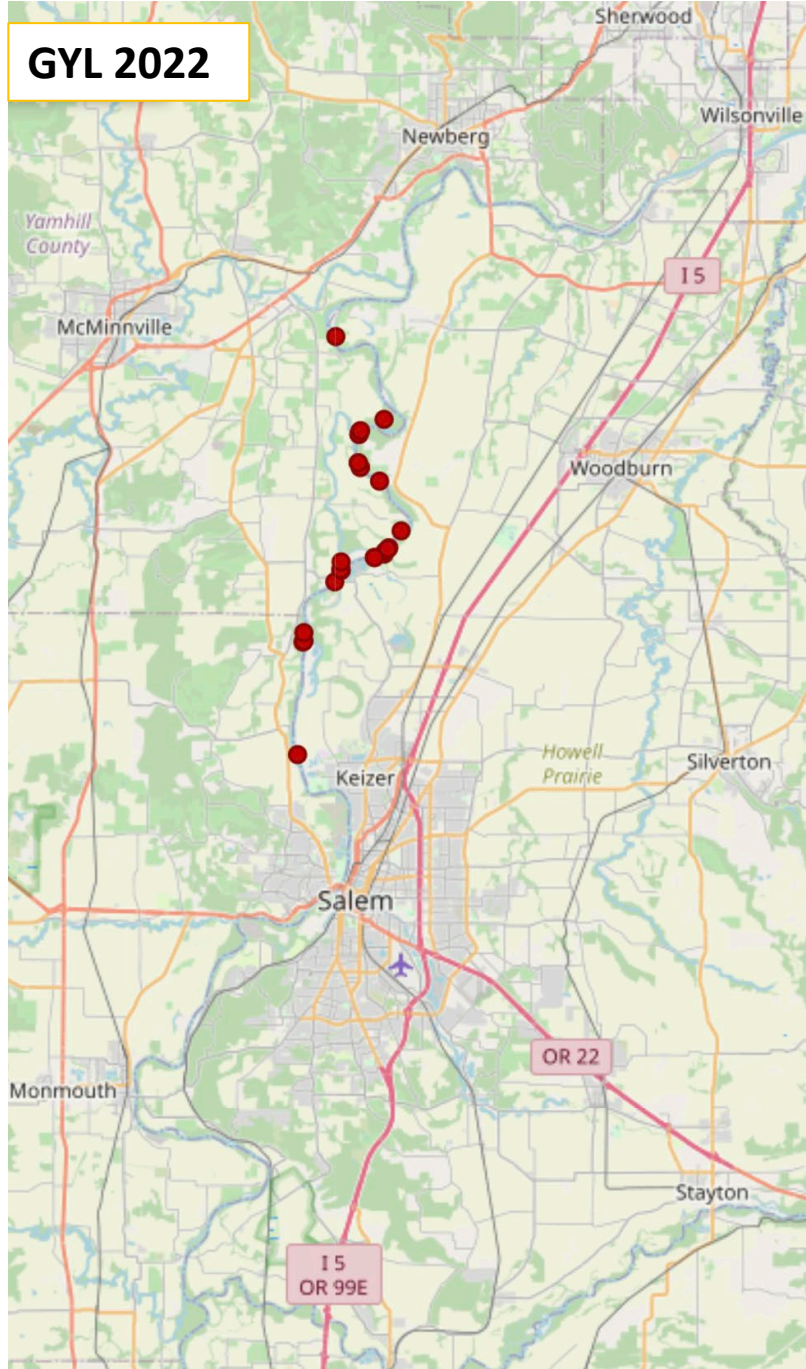
*Lysimachia  
vulgaris*

*An A-listed EDRR weed on the  
Willamette River*

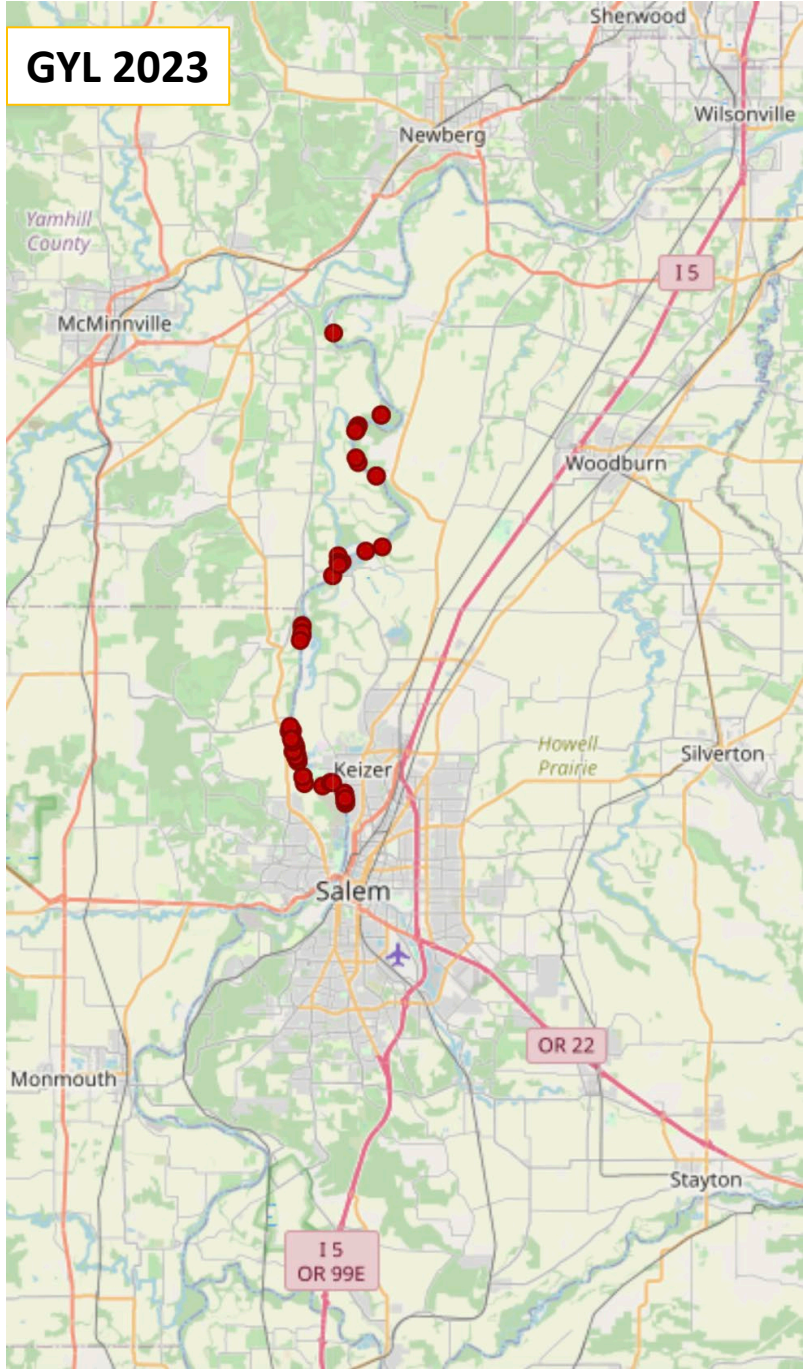
**GYL 2021**



**GYL 2022**



**GYL 2023**





New upstream populations discovered...



Garden yellow loosestrife in its vegetative state...





# The long-standing battle with *Ludwigia*...

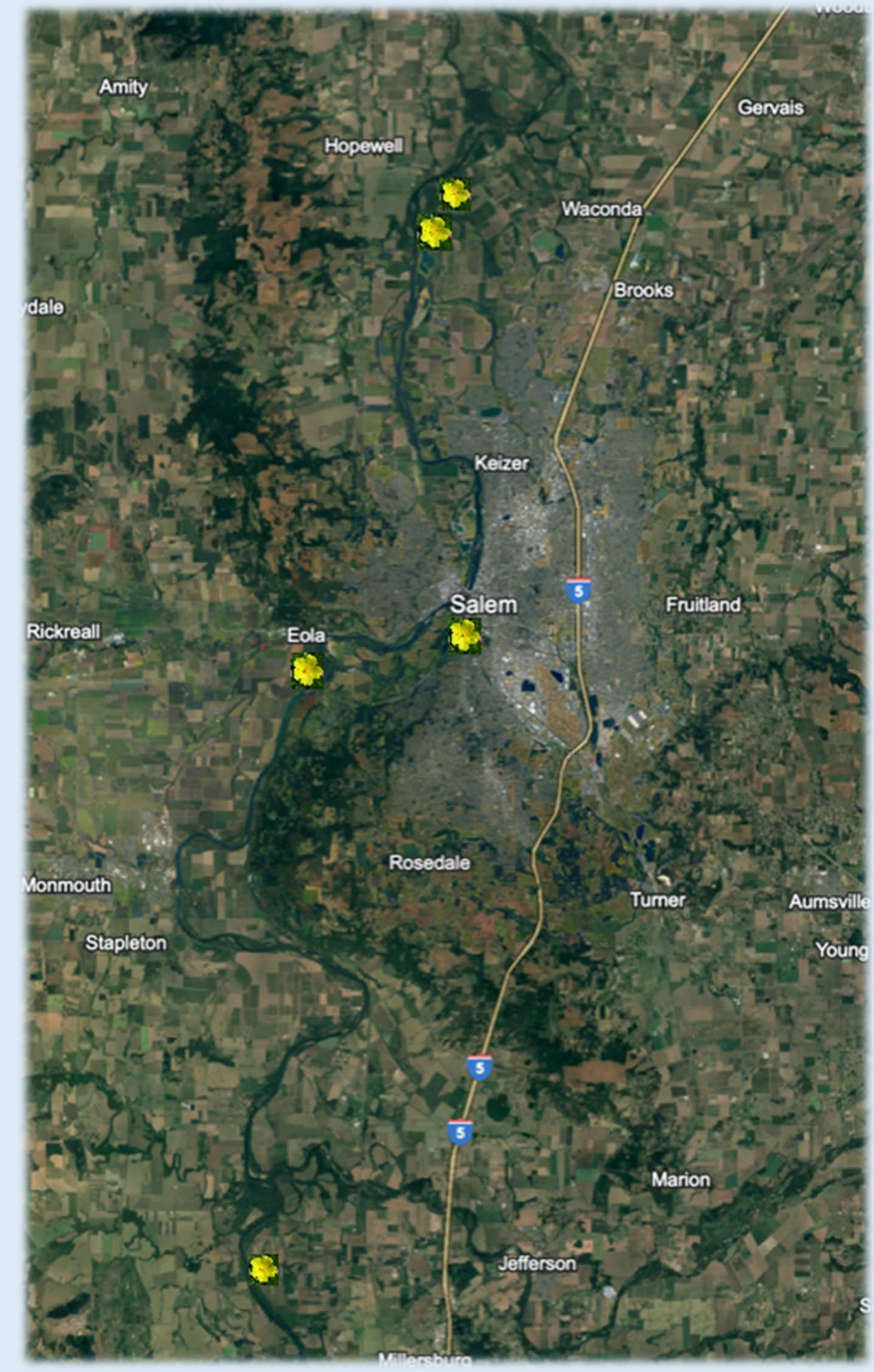
*Five Treatment Sites in Prioritized Areas along 40 River Miles*

- ❑ Black Dog Landing (in partner with OPRD)
- ❑ Gail Achterman Wildlife Area (in partner with ODFW)
- ❑ Willamette Slough (in partner with City of Salem)
- ❑ Windsor Slough (in partner with OPRD)
- ❑ Mission Lake (in partner with OPRD)



=

*Ludwigia* treatment sites Willamette  
Riverkeeper is managing in collaboration  
with partners





Black Dog Landing – One year of two treatments/season





Gail Achterman Wildlife Area – Six years of two treatments/season in total



Minto Brown Island Park – Willamette Slough – Four years of two treatments/season in total



Windsor Slough – One year of two treatments/season



2018



2019

Mission Lake – Five years of two treatments/season in total



“Paddle & Pulls”

We couldn't do it without our incredible volunteers!



# Peer to Peer Day - 2023





ABOUT

AQUATIC INVASIVE SPECIES ▾

ENGAGE & CONNECT ▾

JOIN US!

RESTORING HEALTHY, FUNCTIONAL HABITATS FOR NATIVE SPECIES

# Willamette Aquatic Invasives Network & The Wapato Revival Plan

[wapatorevival.org](http://wapatorevival.org)



WAPATO REVIVAL PLAN

PRESENTED BY WAIN | JANUARY 2021



