

Weed Management 2-3 Years Post-Burn

Riverside (2020)

Bull Complex (2021)

Monte Mattsson

WeedWise Specialist & CRISP Coordinator
Clackamas Soil and Water Conservation District

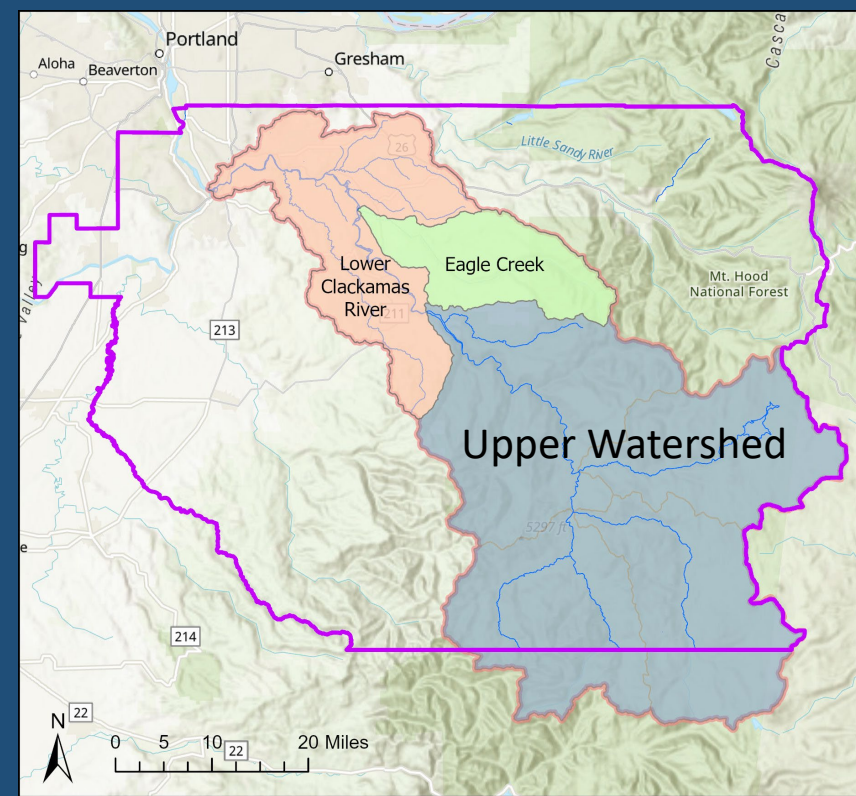
Pull Together 01-Feb-2024

2015

Clackamas River Invasive Species Management Plan

Management Plan

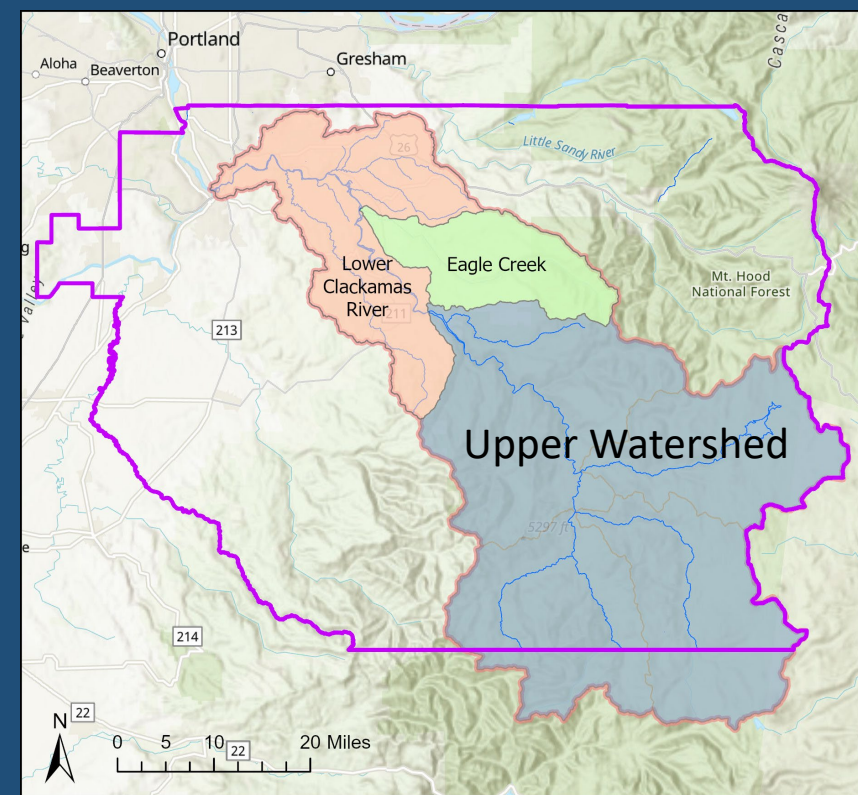
A collaborative effort by the Clackamas River Invasive Species Partnership to prioritize and manage invasive species and associated restoration efforts in the Clackamas River Basin.



2015

Clackamas River Invasive Species Management Plan

A collaborative effort by the Clackamas River Invasive Species Partnership to prioritize and manage invasive species and associated restoration efforts in the Clackamas River Basin.



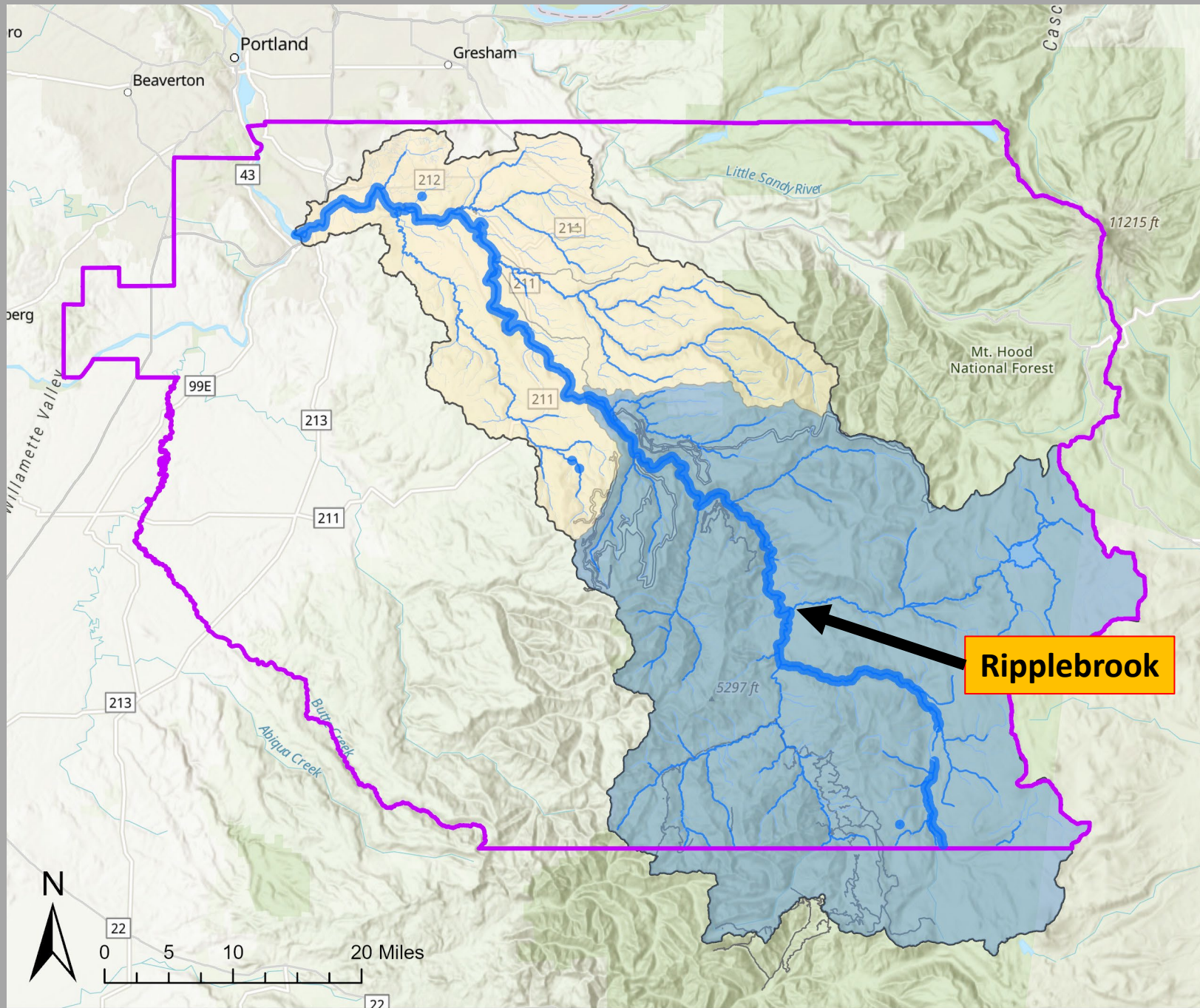
“The Upper Watershed comprises 444,622 acres...”

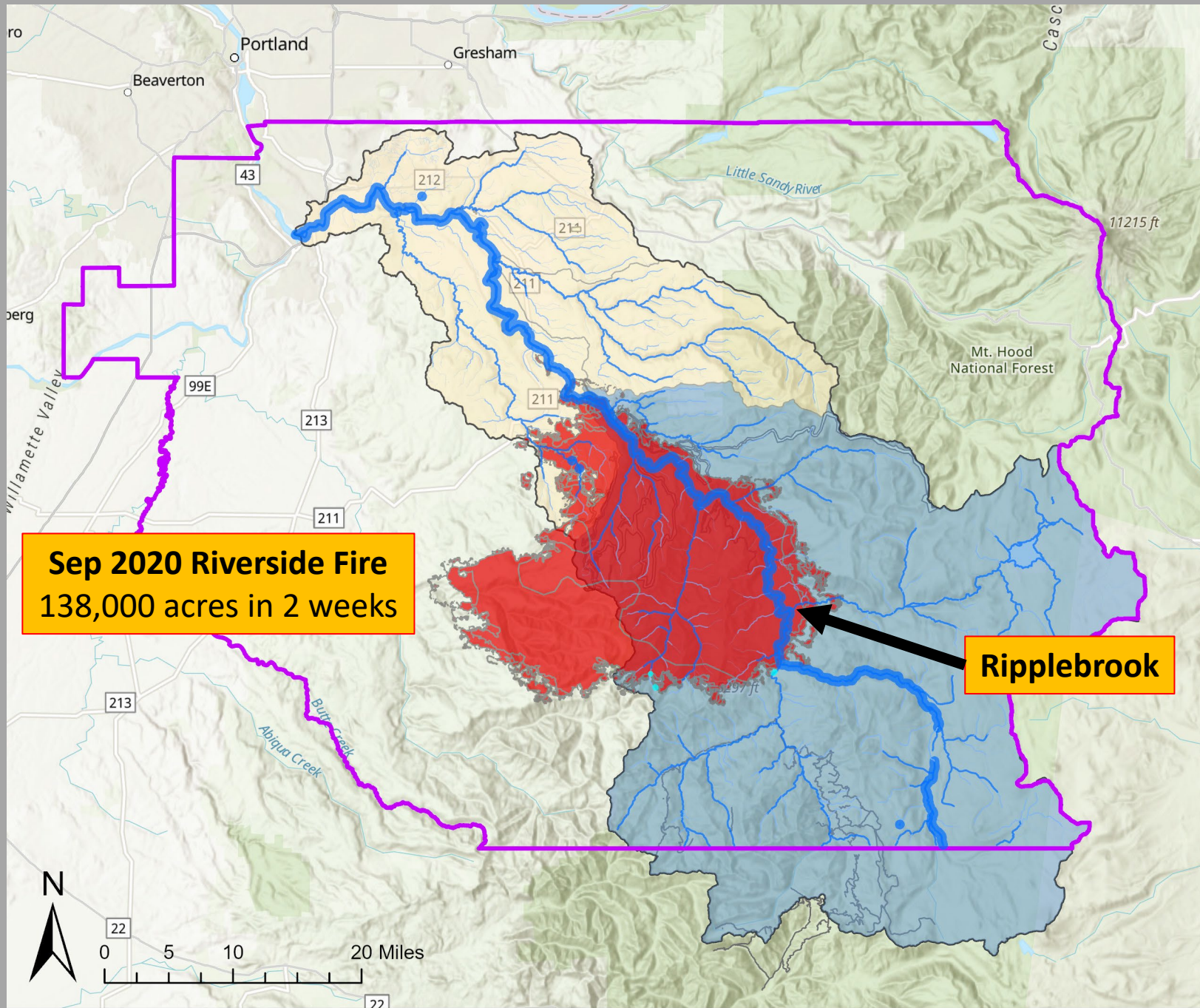
“...the abundance of weeds is relatively low while the habitat values are high...”

*“Due to the generally low invasive species cover...**actions here will be focused on prevention, survey, and targeted weed control efforts.**”*

“Prevention will be the primary prescription...”

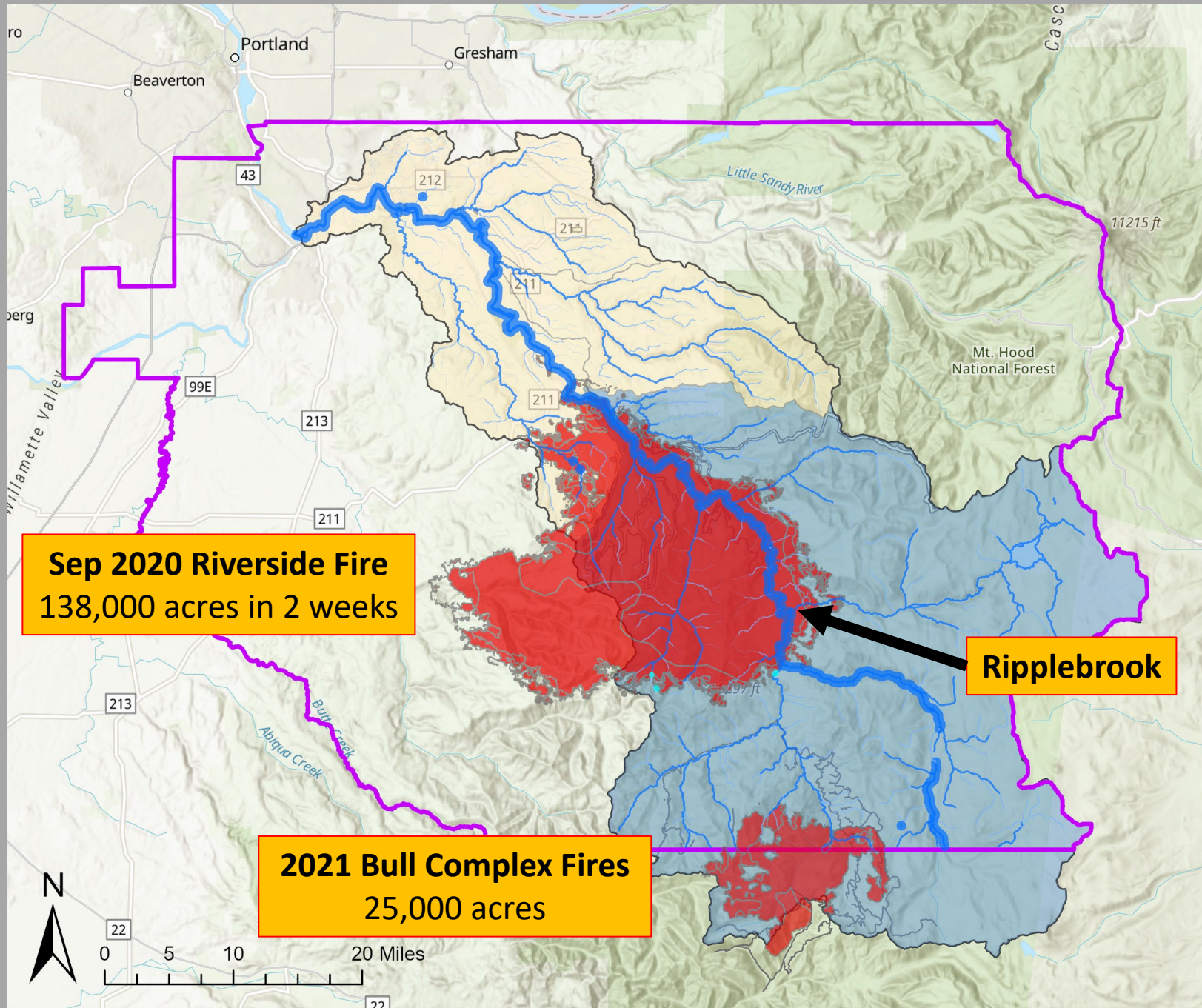






Sep 2020 Riverside Fire
138,000 acres in 2 weeks

Ripplebrook





BEFORE...

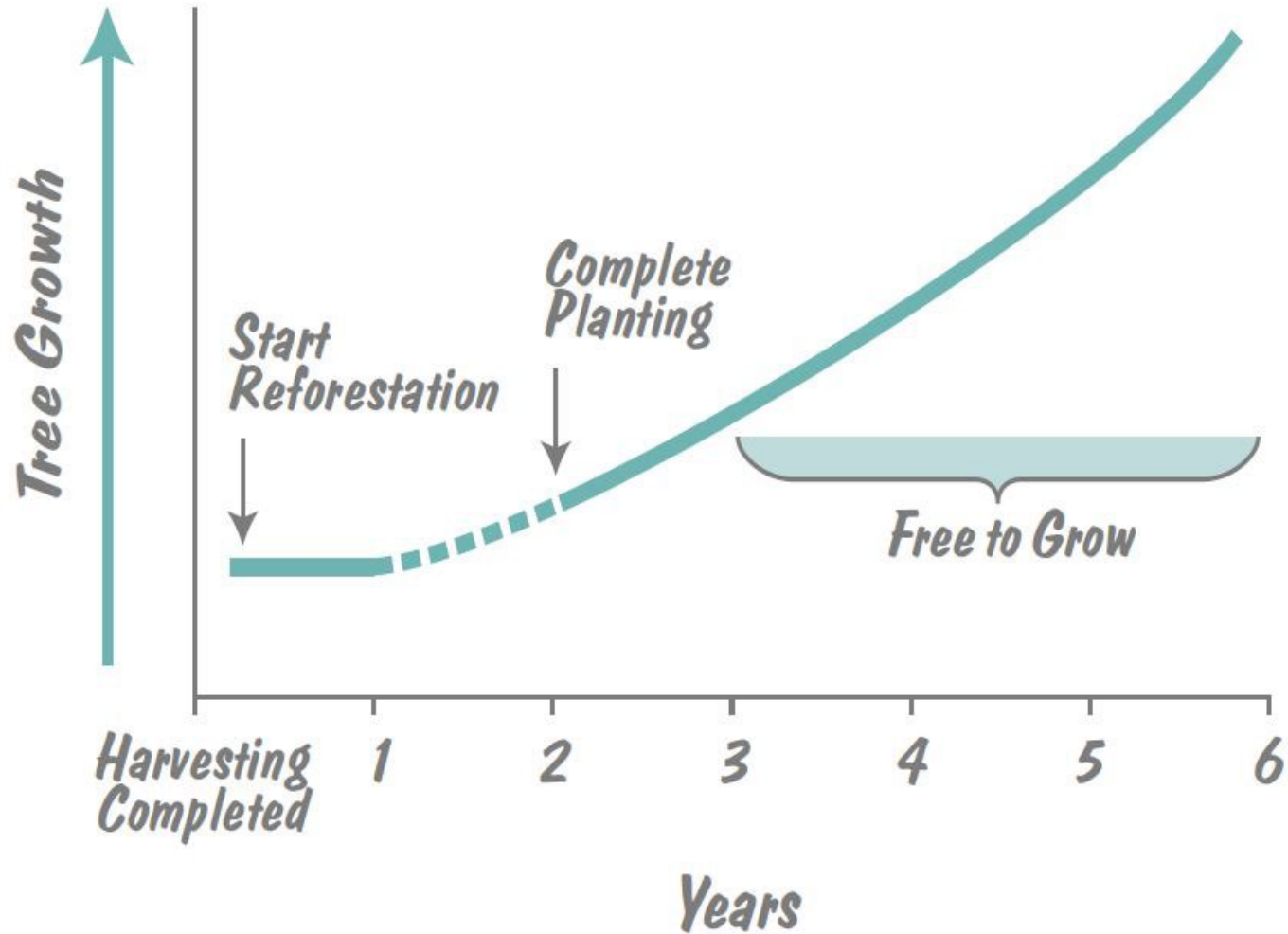




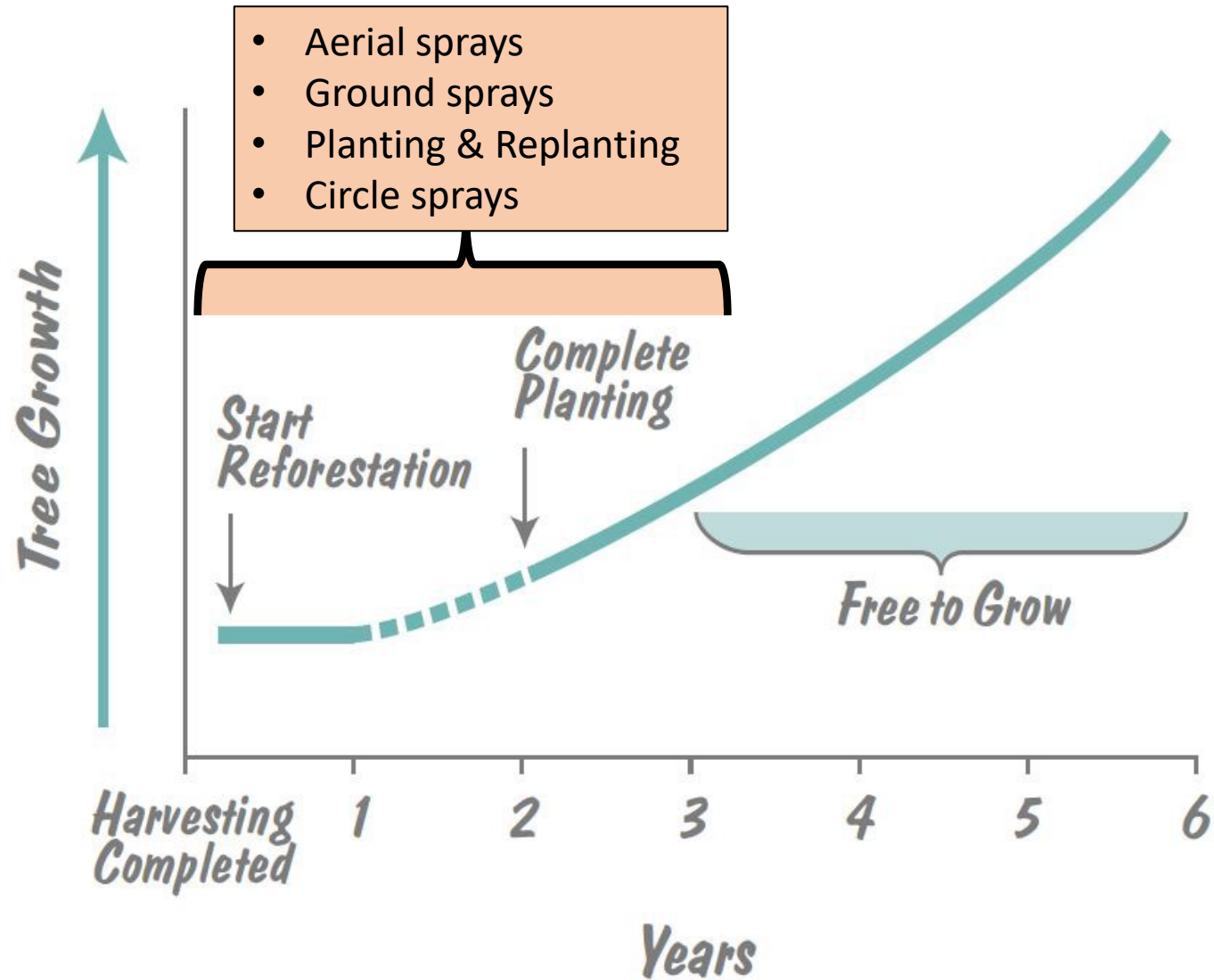
...AFTER



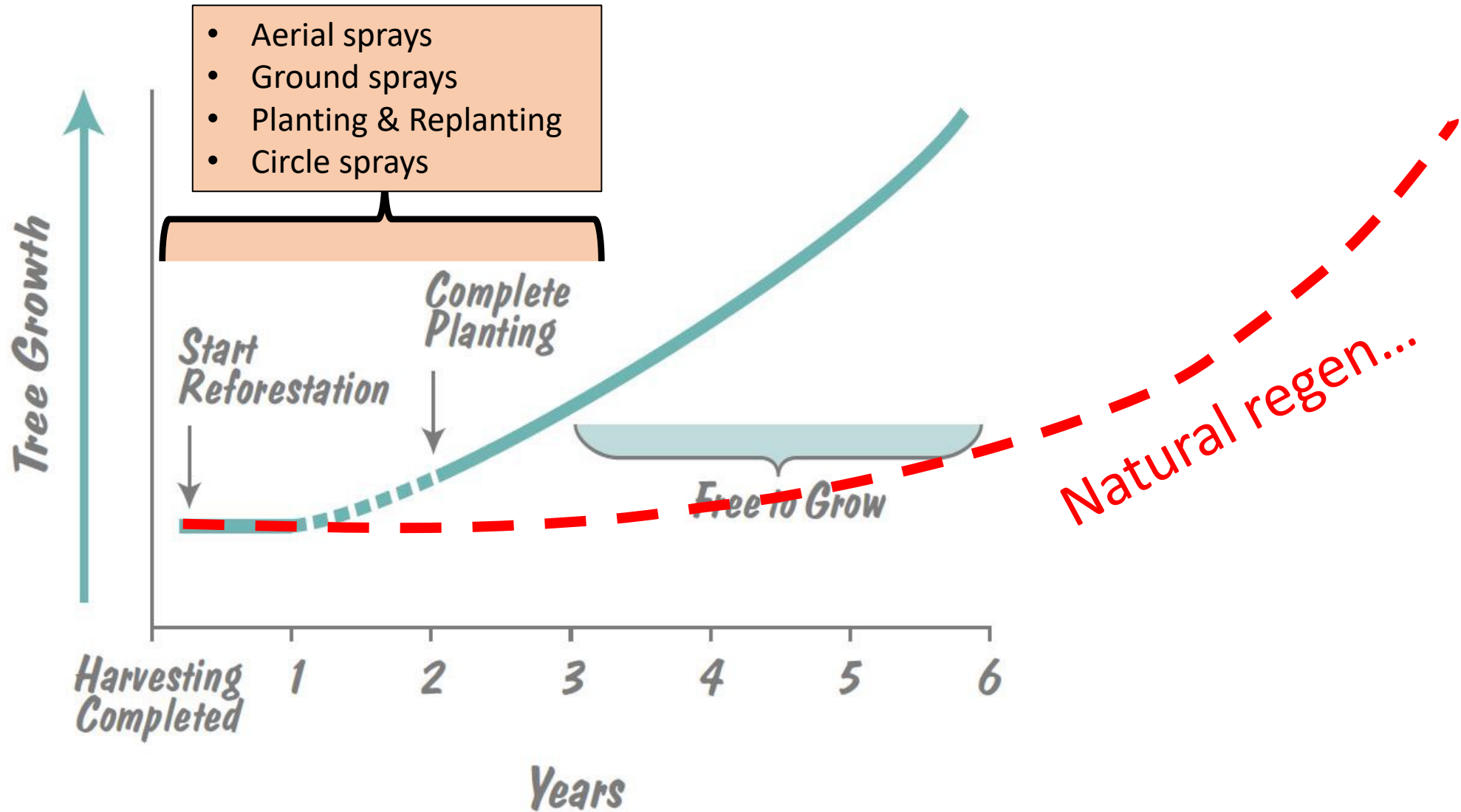
Post-Clearcut Forest Regeneration



Post-Clearcut Forest Regeneration



Post-Clearcut Forest Regeneration

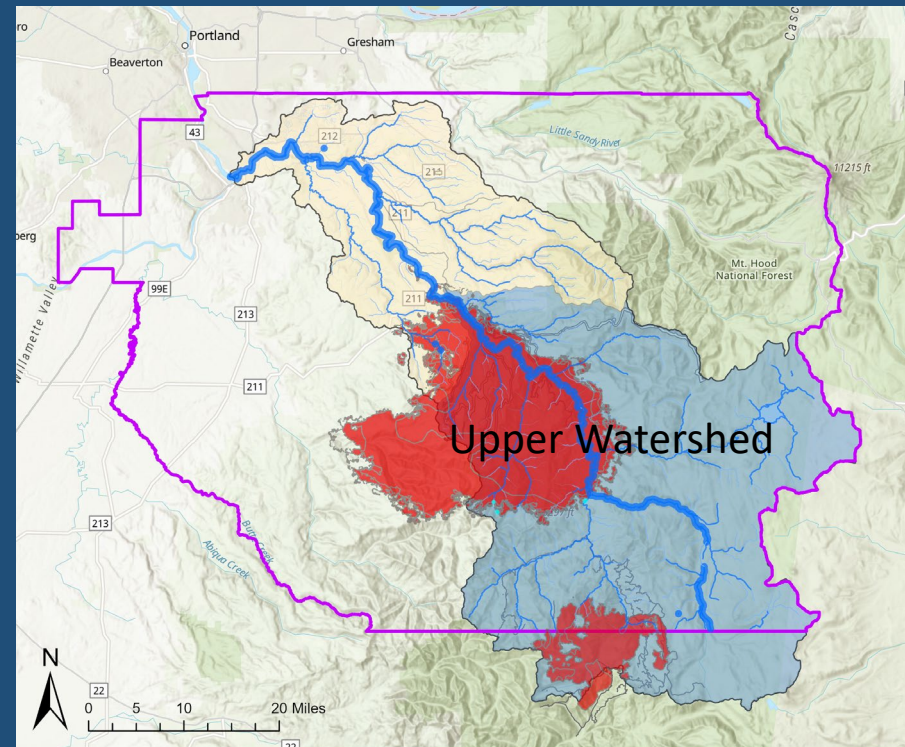


2015

2023

Clackamas River Invasive Species Management Plan

A collaborative effort by the Clackamas River Invasive Species Partnership to prioritize and manage invasive species and associated restoration efforts in the Clackamas River Basin.



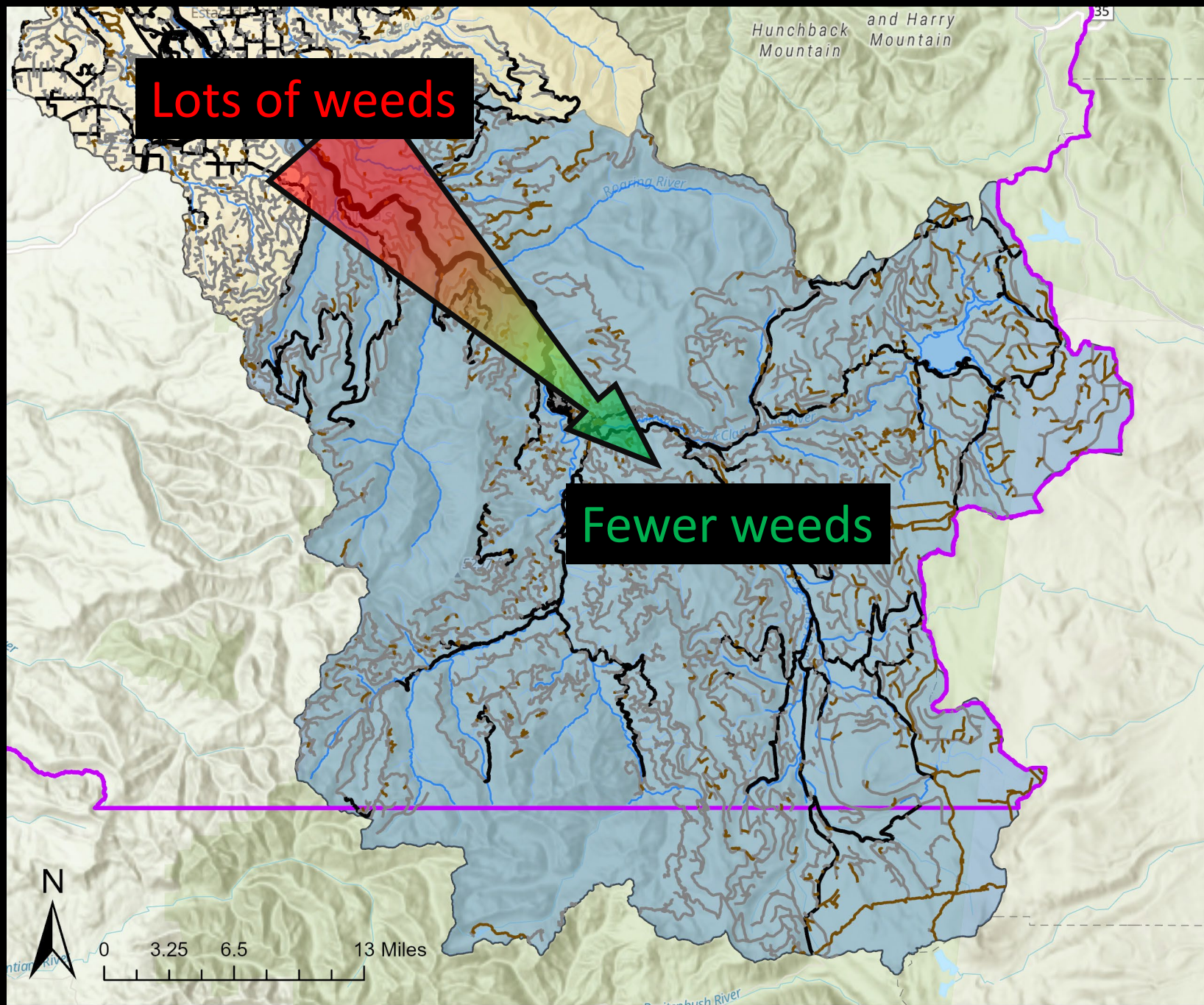
Post -Fires

“...habitat values are high...” **Habitat more sensitive to weed invasions**

“...prevention, survey, and targeted weed control efforts.” **Intensification of effort for 10(?) years**

“Prevention...” **Protect the Best, Restore the Rest**

Where is “The Best”?





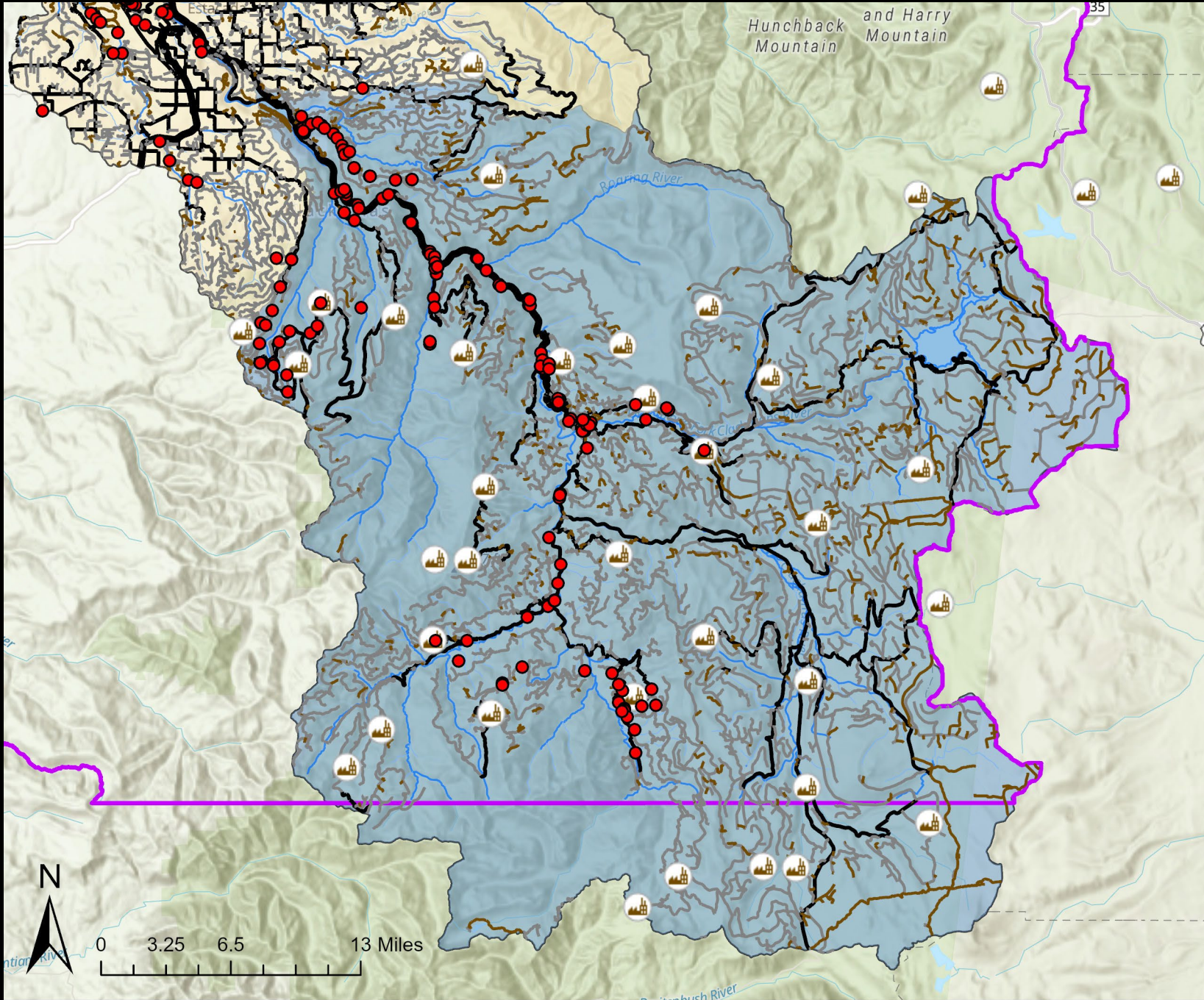
Transmission vectors

- Roads
- Trailheads
- Campgrounds
- Day Use Areas
- Boat Launches
- Pullouts
- Hazard tree removal sites
- Firelines
- Quarries



Number of Treatments			
	YEAR		
Species	2021	2022	2023
Shining geranium	15	28	30
Spotted knapweed	6	7	26
Invasive Blackberries	13	28	21
False brome	23	12	16
Diffuse knapweed	3	9	13
Meadow hawkweed	1	1	13
Reed canarygrass	5	2	13
Other (thistles, tansy ragwort)	2	0	10
Scotch broom	3	2	10
Meadow knapweed	4	2	6
Herb robert	4	3	3
Sulphur cinquefoil	1	2	3
English ivy and Vinca spp.	1	0	2
Rush skeletonweed	0	1	2
Bohemian knotweed	0	2	1
Black locust	1	1	0
Bull thistle	1	0	0
Canada thistle	4	1	0
Common hawkweed	3	3	0
European hawkweed	15	11	0
Poison hemlock	0	1	0

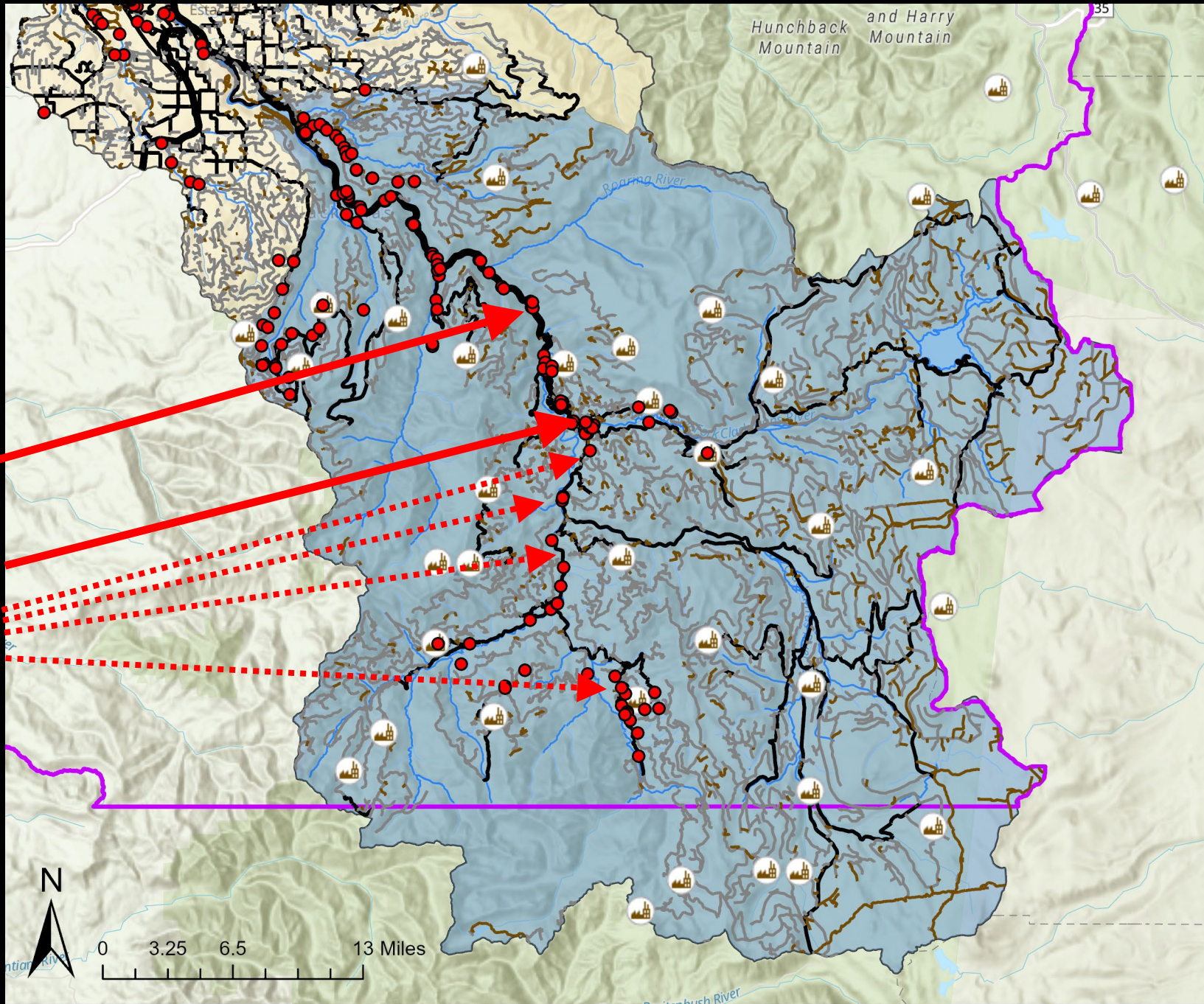
 2023 Treatment Site

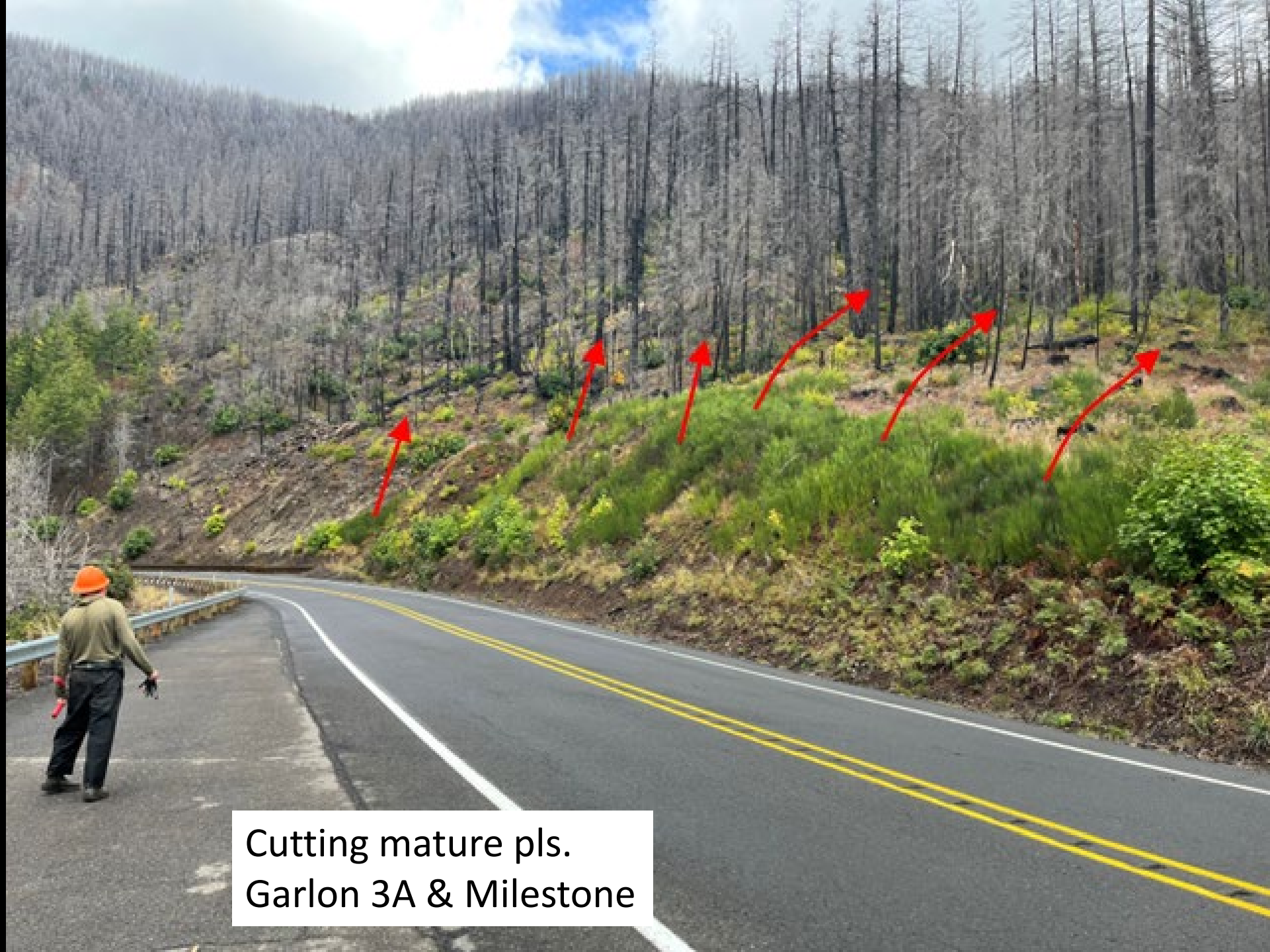


 2023 Treatment Site

Scotch Broom

The Narrows
Ripplebrook Helipad
Many others....





Cutting mature pls.
Garlon 3A & Milestone



 2023 Treatment Site

Blackberry

La Dee Flats 

Memaloose Weigh Station

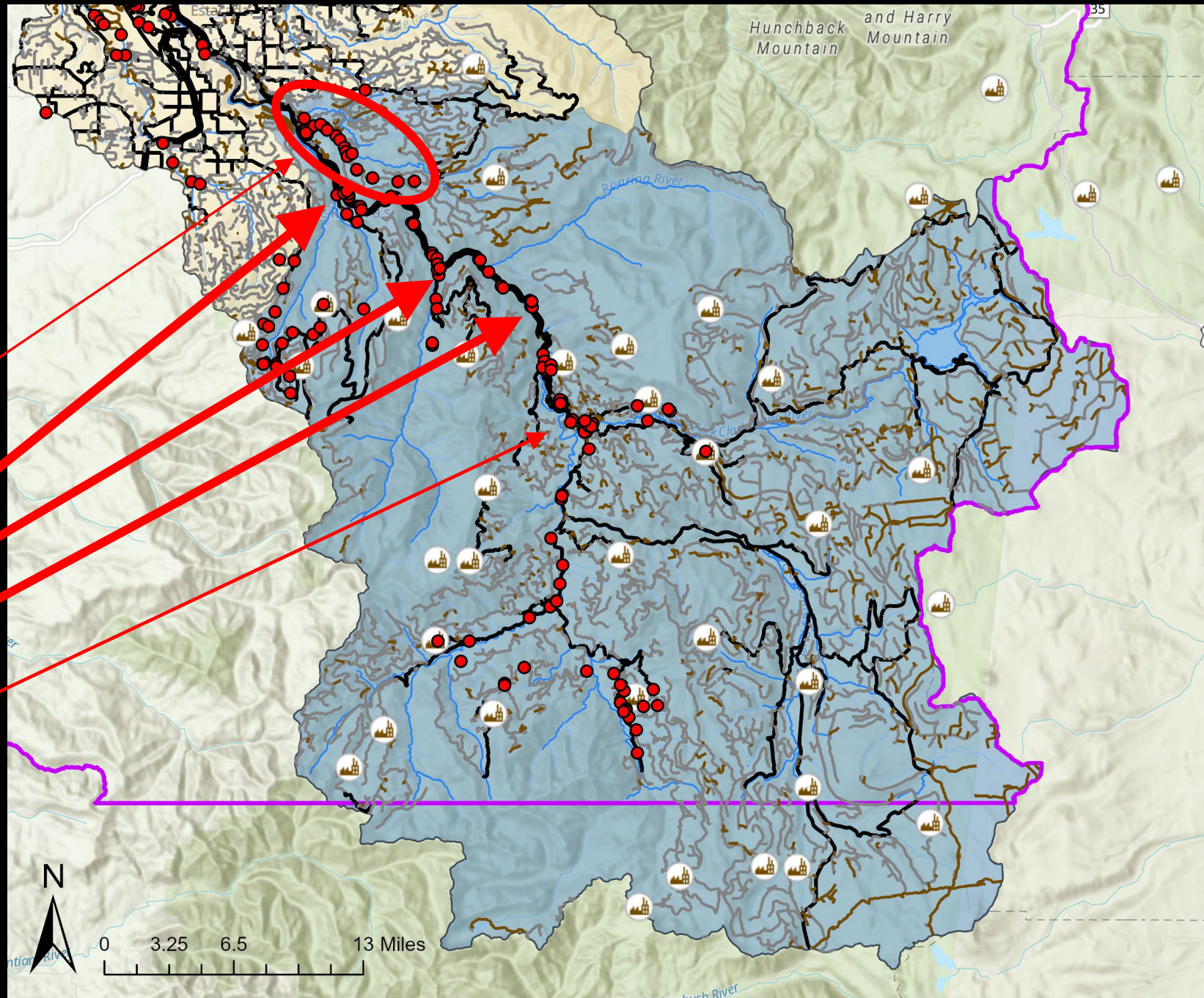
Moore Creek Boat Access

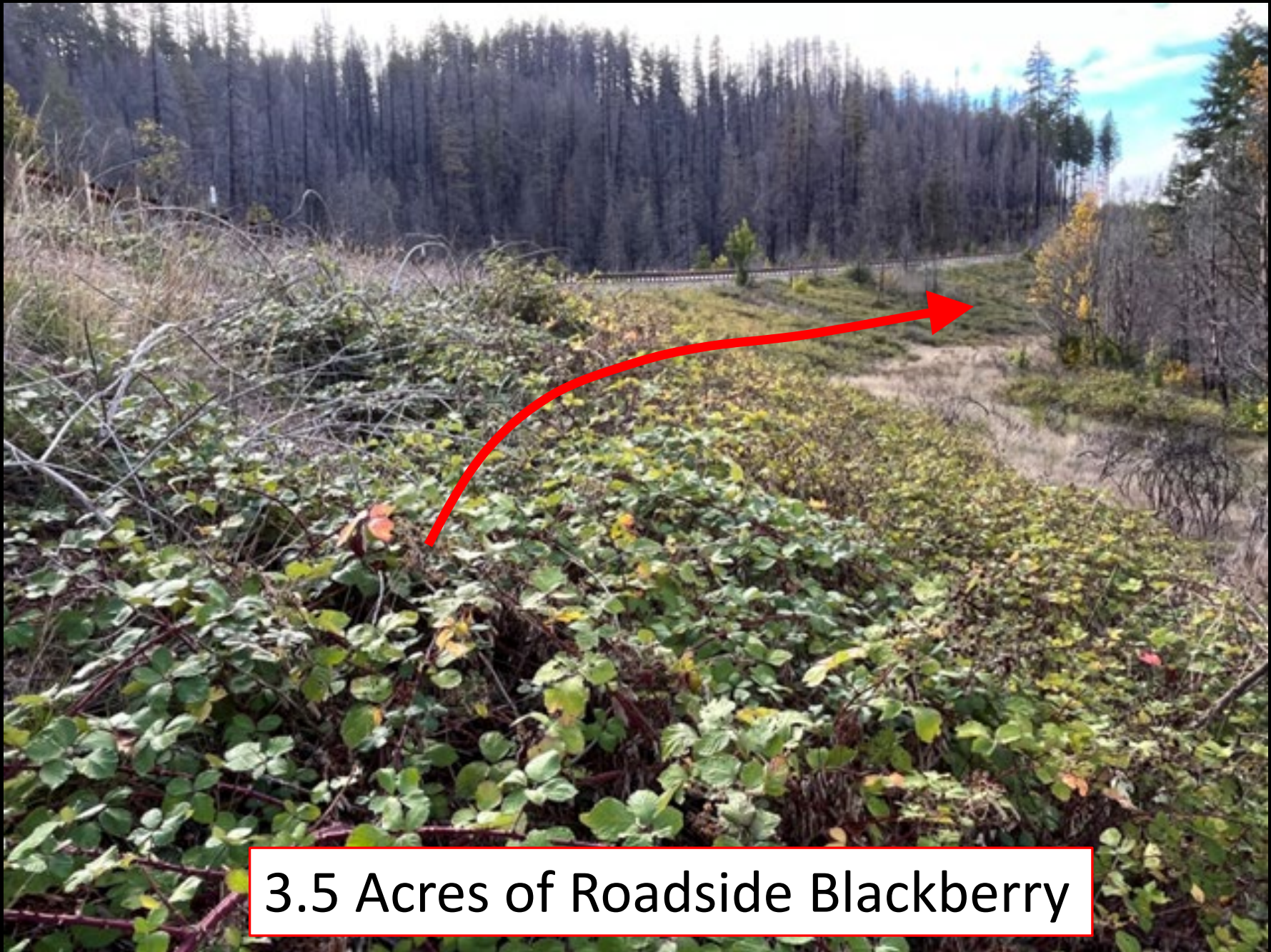
Fish Creek (Road 54)

Hwy224 Roadsides

Timber Lake Job Corp

Many, many others...





3.5 Acres of Roadside Blackberry



Fish Creek/Road 54

Garlon 3A & Milestone

Memaloose Weigh Station

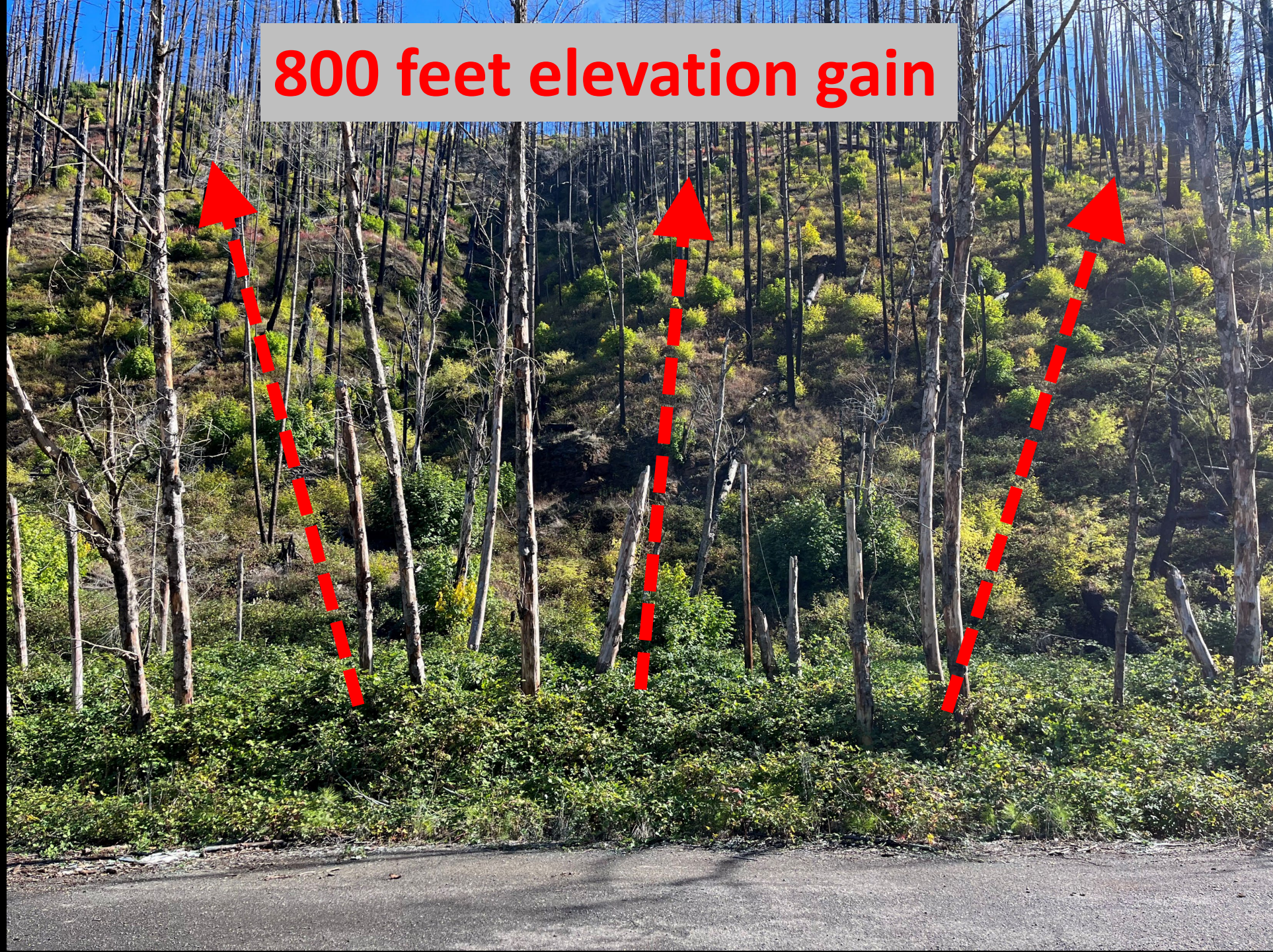


Memaloose Weigh Station





800 feet elevation gain



Roadside Blackberry



Garlon 3A & Milestone



Shining Geranium

- Garlon 3A & Milestone
- Imazapyr and Aquaneet
- Escort and Milestone



Indian Henry Campground

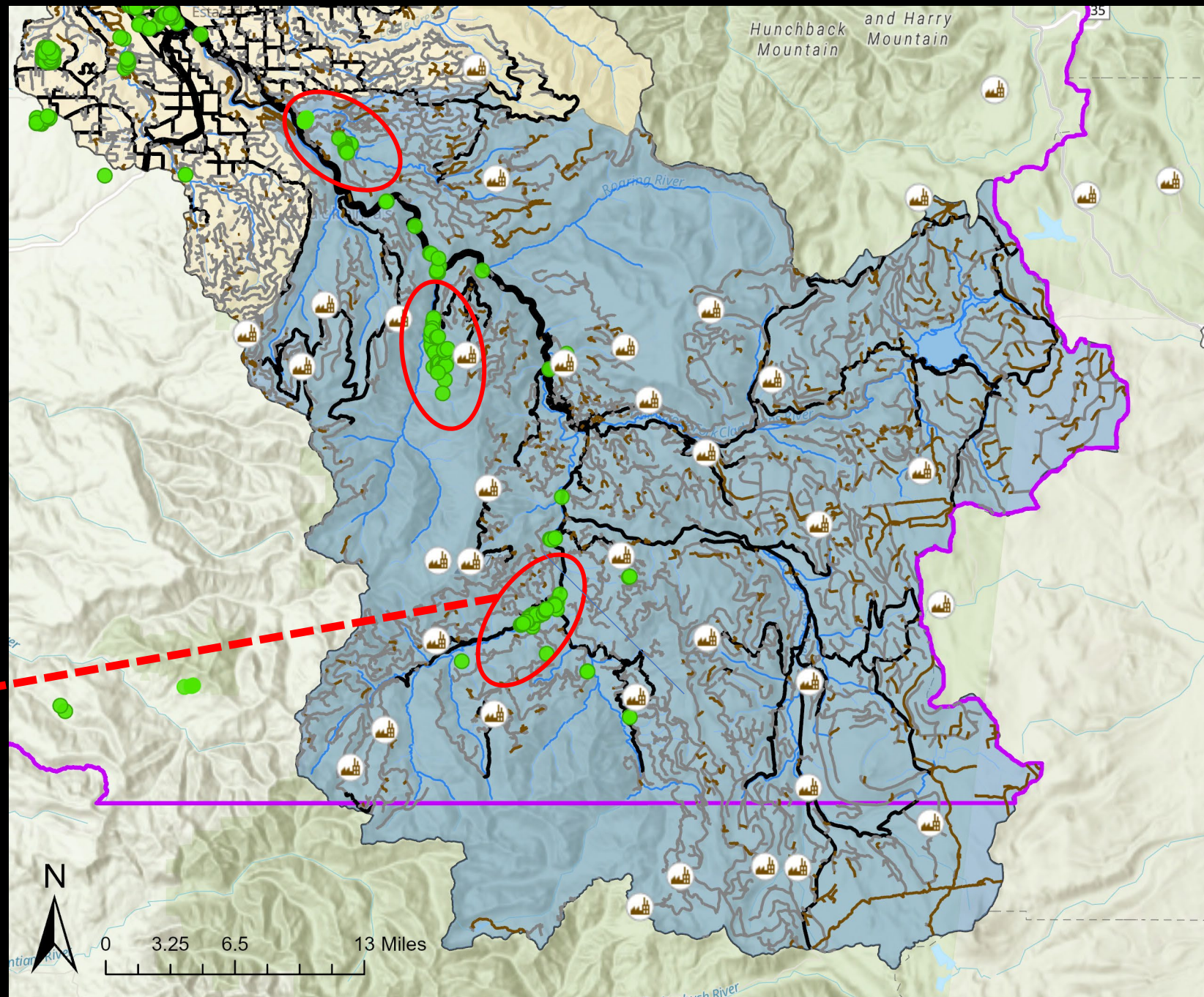


Shining Geranium

- Garlon 3A & Milestone
- Imazapyr and Aquaneet
- Escort and Milestone

False Brome

- 176 gross acres
- 0.39 net acres
- Aquaneat/Rodeo









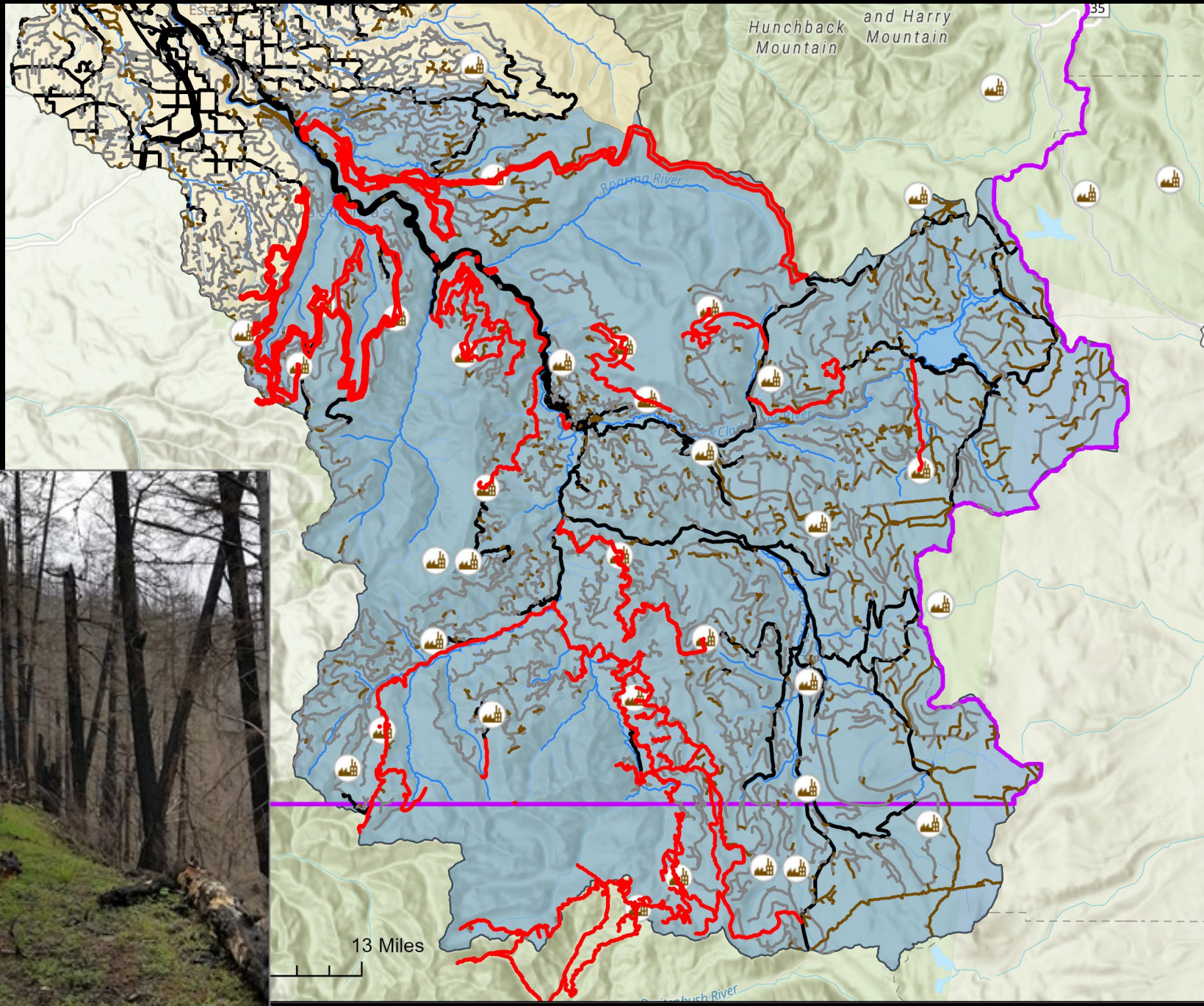




Garlon 3A & Milestone

• Surveys

- Quarries
- Roadsides
- Remote campgrounds
- Trailheads



Lessons (from my naïve perspective)

- Rapid Response (\$\$ ready to go)
 - Maps and Data
 - Interagency coordination
- Prioritization
 - Vectors
 - Limiting resources?
 - Protect intact areas
- Contractor familiarity





Pacific Crest Consulting



greenbanks



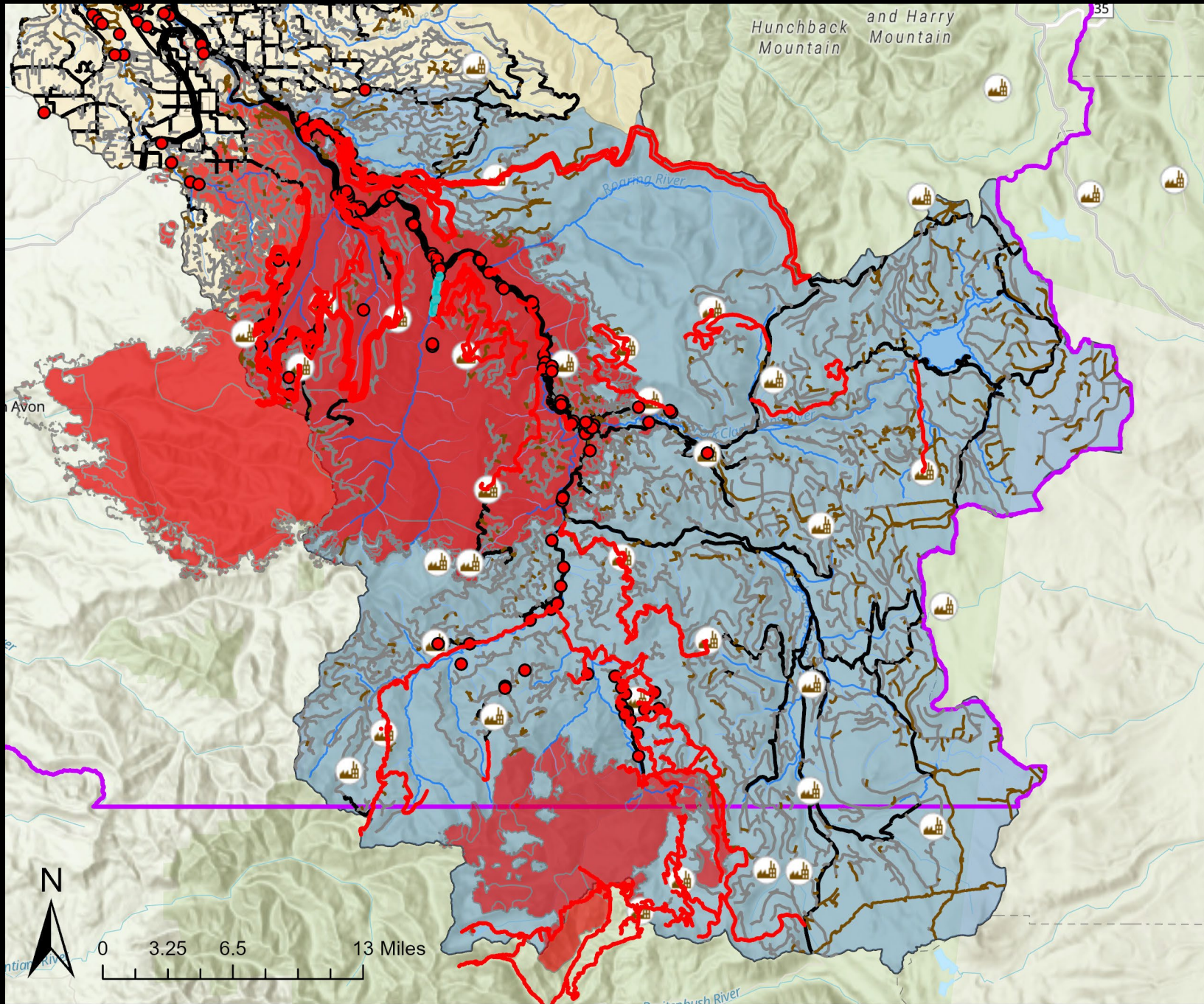
Wild Habitat



Diego Franco







Some species we see...

Native species	Invasive species
Trees	Trees
Bigleaf maple	European holly
Douglas fir	English hawthorn
Black cottonwood	Black locust
Red alder	
Willow	
Shrubs/Vines	Shrubs/Vines
Trailing blackberry	Invasive Blackberries
Elderberry	Scotch broom
Ferns	Knotweed
Red-osier dogwood	Ivy
Oregon grape	Vinca
Herbaceous	Herbaceous
Variable leaf collomia	Shining geranium
Small flowered nemophila	Herb robert
Pacific waterleaf	False brome
Pearly everlasting	Reed canarygrass
Fireweed	Sulfur cinquefoil
Coltsfoot	Rush skeletonweed
Cow parsnip	Hawkweeds
Clackamas iris	Knapweeds
Grasses	Thistles
	St. Johnswort
	Tansy ragwort
	Mullein

Some species we see...

Native species	Invasive species
Trees	Trees
Bigleaf maple	European holly
Douglas fir	English hawthorn
Black cottonwood	Black locust
Red alder	
Willow	
Shrubs/Vines	Shrubs/Vines
Trailing blackberry	Invasive Blackberries
Elderberry	Scotch broom
Ferns	Knotweed
Red-osier dogwood	Ivy
Oregon grape	Vinca
Herbaceous	Herbaceous
Variable leaf collomia	Shining geranium
Small flowered nemophila	Herb robert
Pacific waterleaf	False brome
Pearly everlasting	Reed canarygrass
Fireweed	Sulfur cinquefoil
Coltsfoot	Rush skeletonweed
Cow parsnip	Hawkweeds
Clackamas iris	Knapweeds
Grasses	Thistles
	St. Johnswort
	Tansy ragwort
	Mullein



Native species	Invasive species
Trees	Trees
Bigleaf maple	European holly
Douglas fir	English hawthorn
Black cottonwood	Black locust
Red alder	
Willow	
Shrubs/Vines	Shrubs/Vines
Trailing blackberry	Invasive Blackberries
Elderberry	Scotch broom
Ferns	Knotweed
Red-osier dogwood	Ivy
Oregon grape	Vinca
Herbaceous	Herbaceous
Variable leaf collomia	Shining geranium
Small flowered nemophila	Herb robert
Pacific waterleaf	False brome
Pearly everlasting	Reed canarygrass
Fireweed	Sulfur cinquefoil
Coltsfoot	Rush skeletonweed
Cow parsnip	Hawkweeds
Clackamas iris	Knapweeds
Grasses	Thistles
	St. Johnswort
	Tansy ragwort
	Mullein 