

Emergency Stabilization Beachie Creek Burn



A landscape photograph showing a valley with a mix of green and dead trees under a clear blue sky. The foreground is a rocky, grassy slope with many dead, brown trees. The middle ground shows a dense forest of tall, thin trees, some green and some dead. The background is a clear blue sky.

Justin Cooley

WeedWise Specialist

Clackamas Soil & Water Conservation District

503-210-6010 (office)

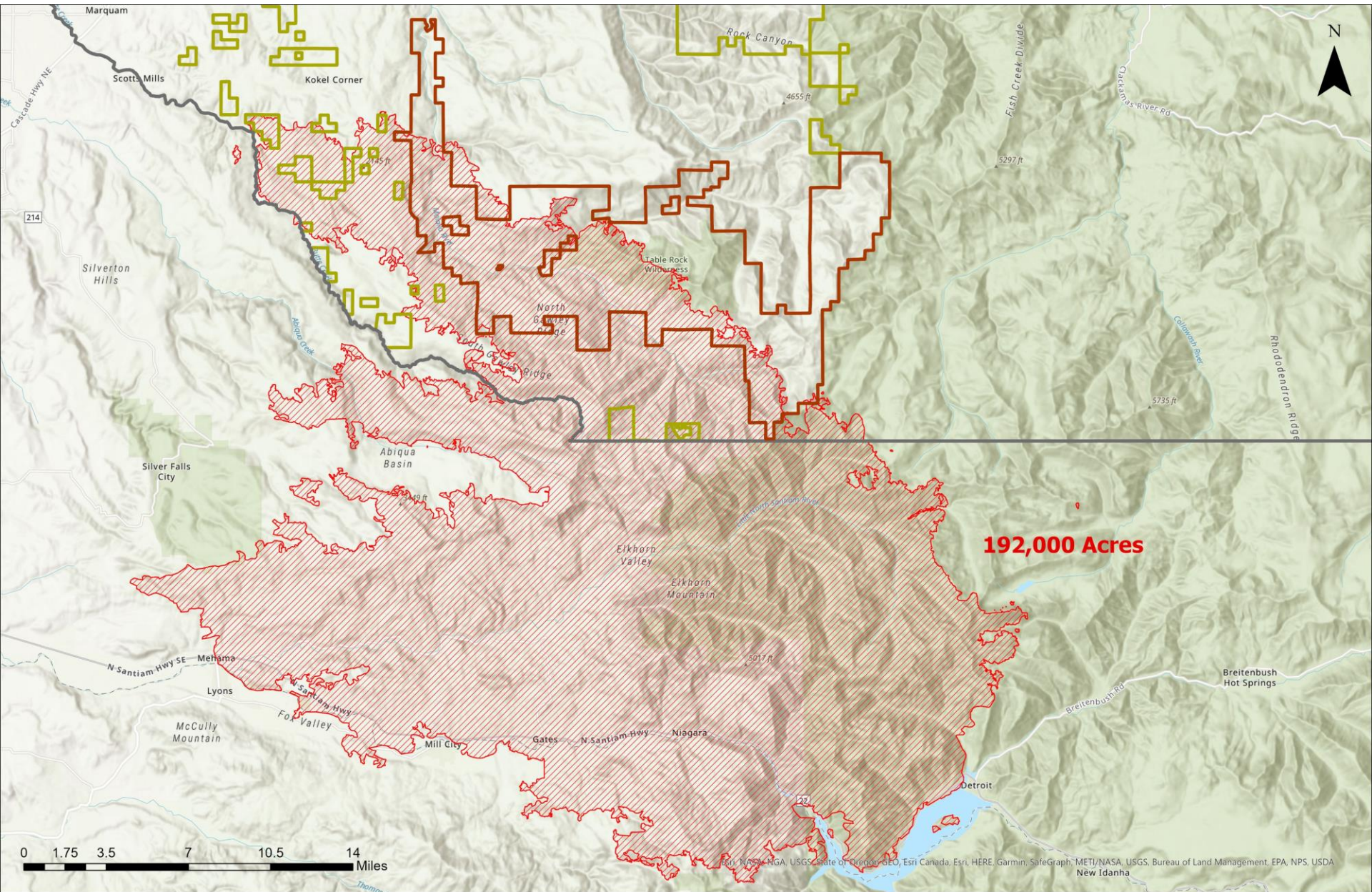
503-998-1672 (cell)

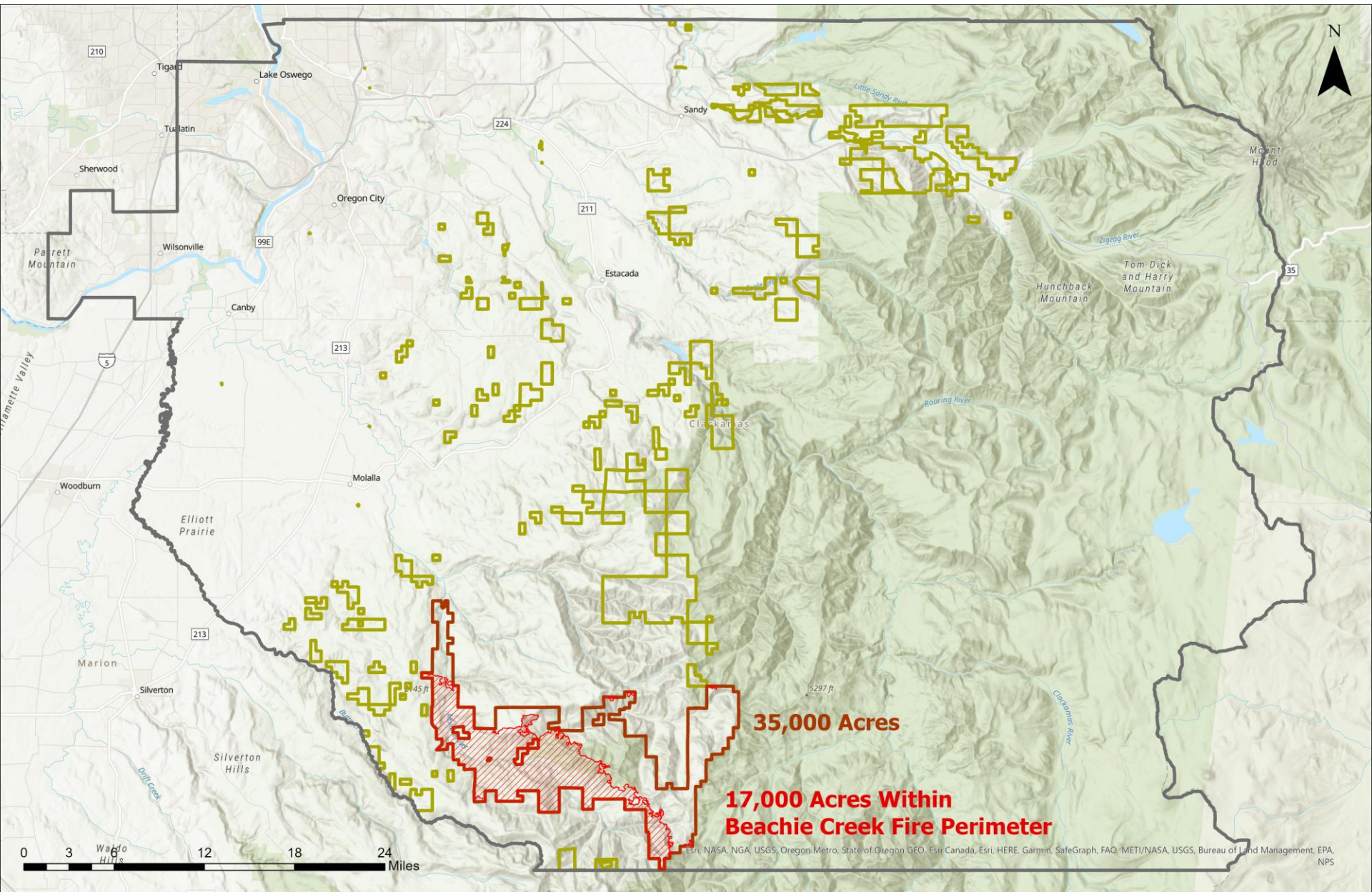
jcooley@conservationdistrict.org

Office Location

22055 S Beaver Creek Road, Suite 1

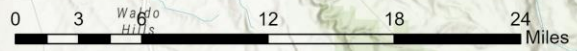
Beaver Creek, OR 97004





35,000 Acres

**17,000 Acres Within
Beachie Creek Fire Perimeter**



Esri, NASA, NGA, USGS, Oregon Metro, State of Oregon GEO, Esri Canada, Esri, HERE, Garmin, SafeGraph, FAO, METI/NASA, USGS, Bureau of Land Management, EPA, NPS





CLEVELAND LIBRARY AND MUSEUM
CONSERVATION
DISTRICT
Good dirt. Clean water.









Priority Weeds 2023



2

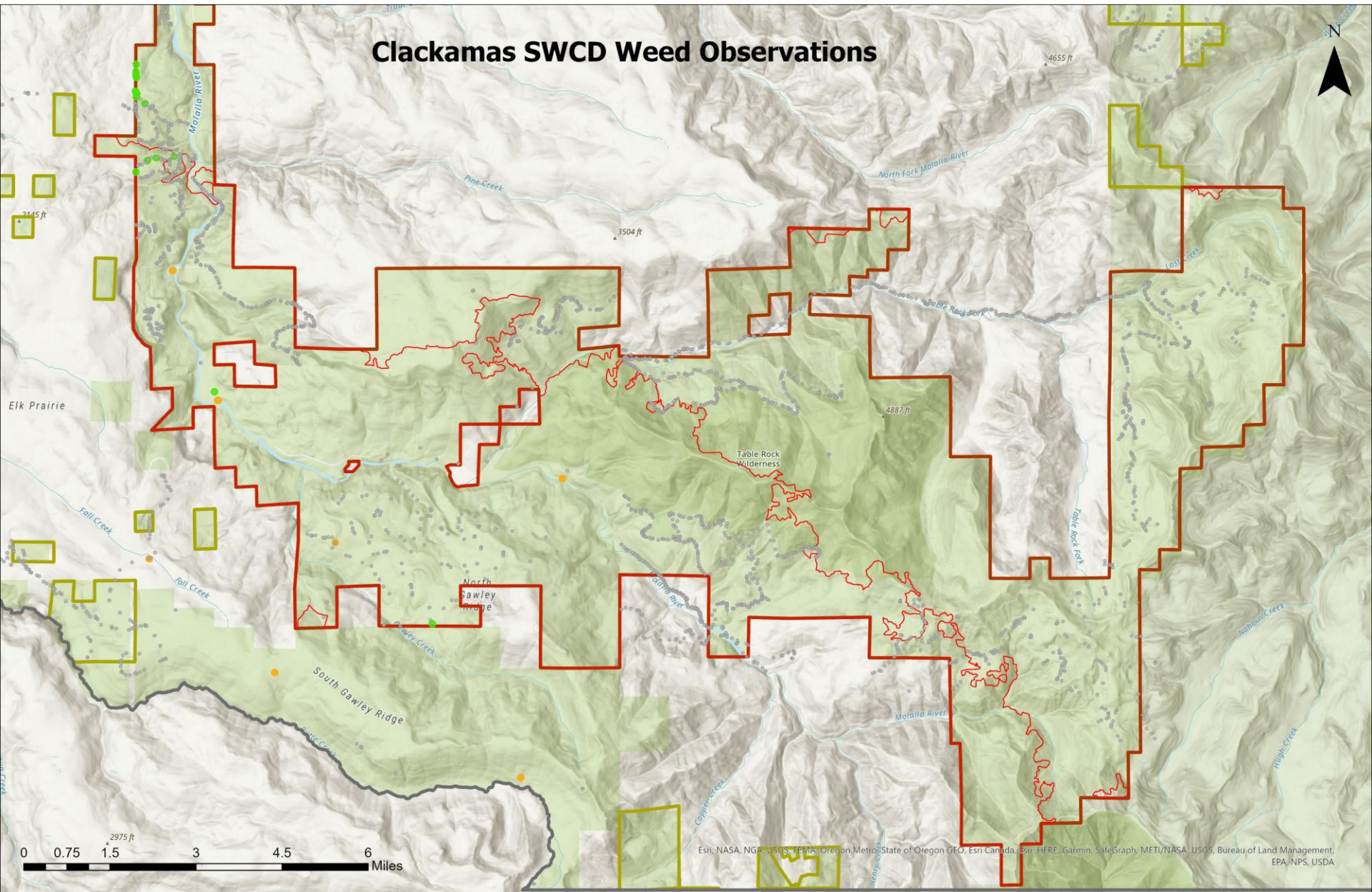
Scientific Name	Common Name
<i>Ailanthus altissima</i>	tree of heaven
<i>Alliaria petiolata</i>	garlic mustard
<i>Brachypodium sylvaticum</i>	slender false brome
<i>Carduus pycnocephalus</i>	Italian thistle
<i>Centaurea diffusa</i>	diffuse knapweed
<i>Centaurea solstitialis</i>	yellow star-thistle
<i>Centaurea stoebe</i>	spotted knapweed
<i>Centaurea xmoncktonii</i>	meadow knapweed
<i>Daphne laureola</i>	spurge-laurel
<i>Euphorbia oblongata</i>	oblong spurge
<i>Fallopia japonica</i>	Japanese knotweed
<i>Fallopia sachalinensis</i>	giant knotweed
<i>Fallopia xbohemica</i>	Bohemian knotweed
<i>Galega officinalis</i>	goatsrue

Scientific Name	Common Name
<i>Heracleum mantegazzianum</i>	giant hogweed
<i>Hieracium aurantiacum</i>	orange hawkweed
<i>Hieracium caespitosum</i>	meadow hawkweed
<i>Hieracium pilosella</i>	mouse-ear hawkweed
<i>Impatiens glandulifera</i>	policemen's helmet
<i>Ludwigia hexapetala</i>	water primrose
<i>Ludwigia peploides</i>	floating primrose-willow
<i>Lythrum salicaria</i>	purple loosestrife
<i>Petasites japonicus</i>	Japanese butterbur
<i>Potentilla recta</i>	sulfur cinquefoil
<i>Silybum marianum</i>	milk thistle
<i>Tribulus terrestris</i>	puncturevine
<i>Ulex europaeus</i>	gorse

Honorable Mentions:

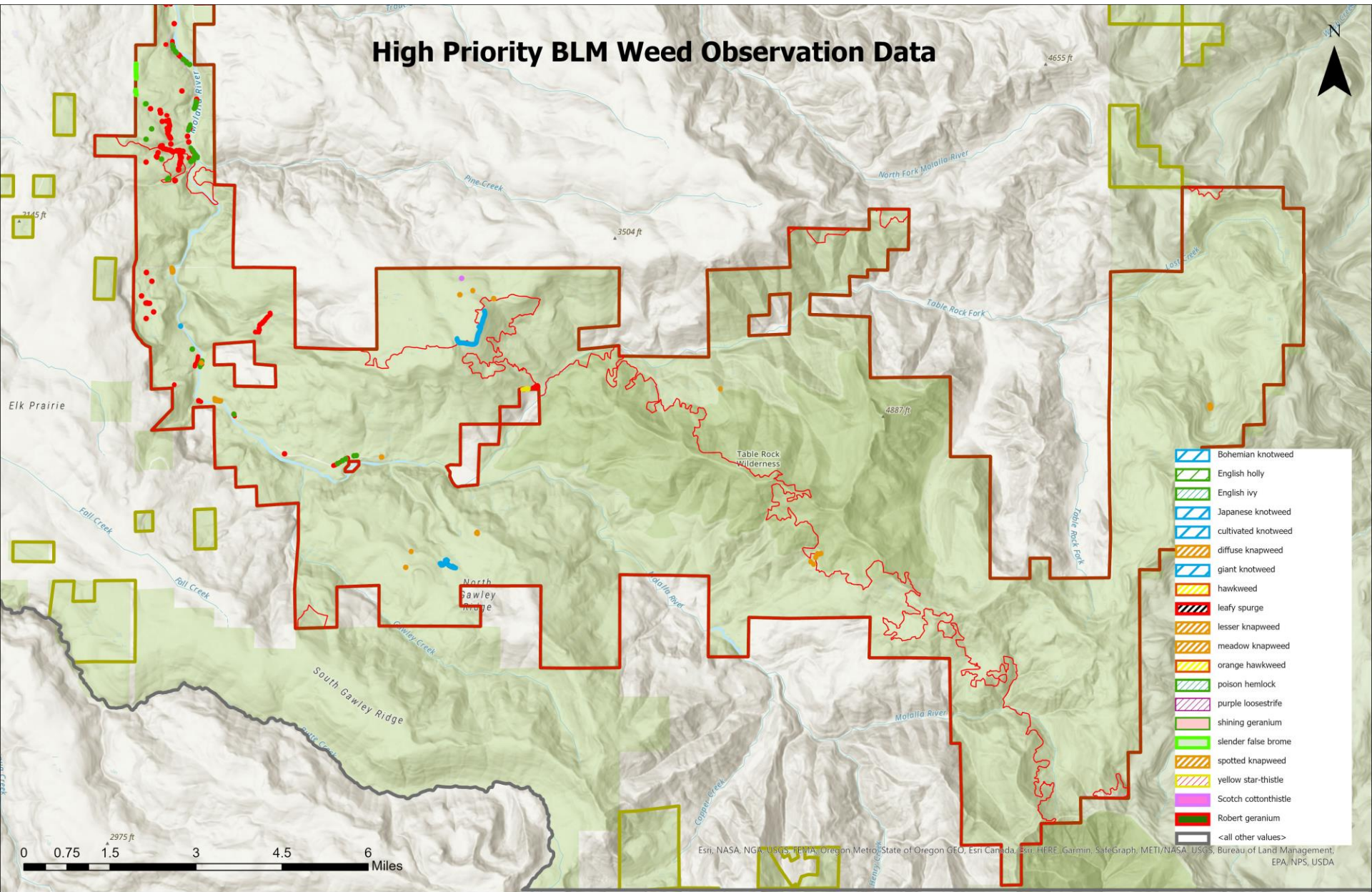
- Rush skeleton weed
- Houndstongue
- kudzu
- other knapweeds
- other hawkweeds
- *Impatiens* spp

Clackamas SWCD Weed Observations

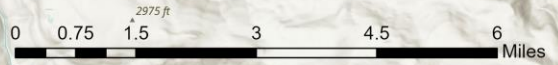


Esri, NASA, NOAA, USGS, FEMA, Oregon Metro, State of Oregon GEO, Esri Canada, Esri, HERE, Garmin, SafeGraph, METI/NASA, USGS, Bureau of Land Management, EPA, NPS, USDA

High Priority BLM Weed Observation Data



- Bohemian knotweed
- English holly
- English ivy
- Japanese knotweed
- cultivated knotweed
- diffuse knapweed
- giant knotweed
- hawkweed
- leafy spurge
- lesser knapweed
- meadow knapweed
- orange hawkweed
- poison hemlock
- purple loosestrife
- shining geranium
- slender false brome
- spotted knapweed
- yellow star-thistle
- Scotch cottonthistle
- Robert geranium
- <all other values>

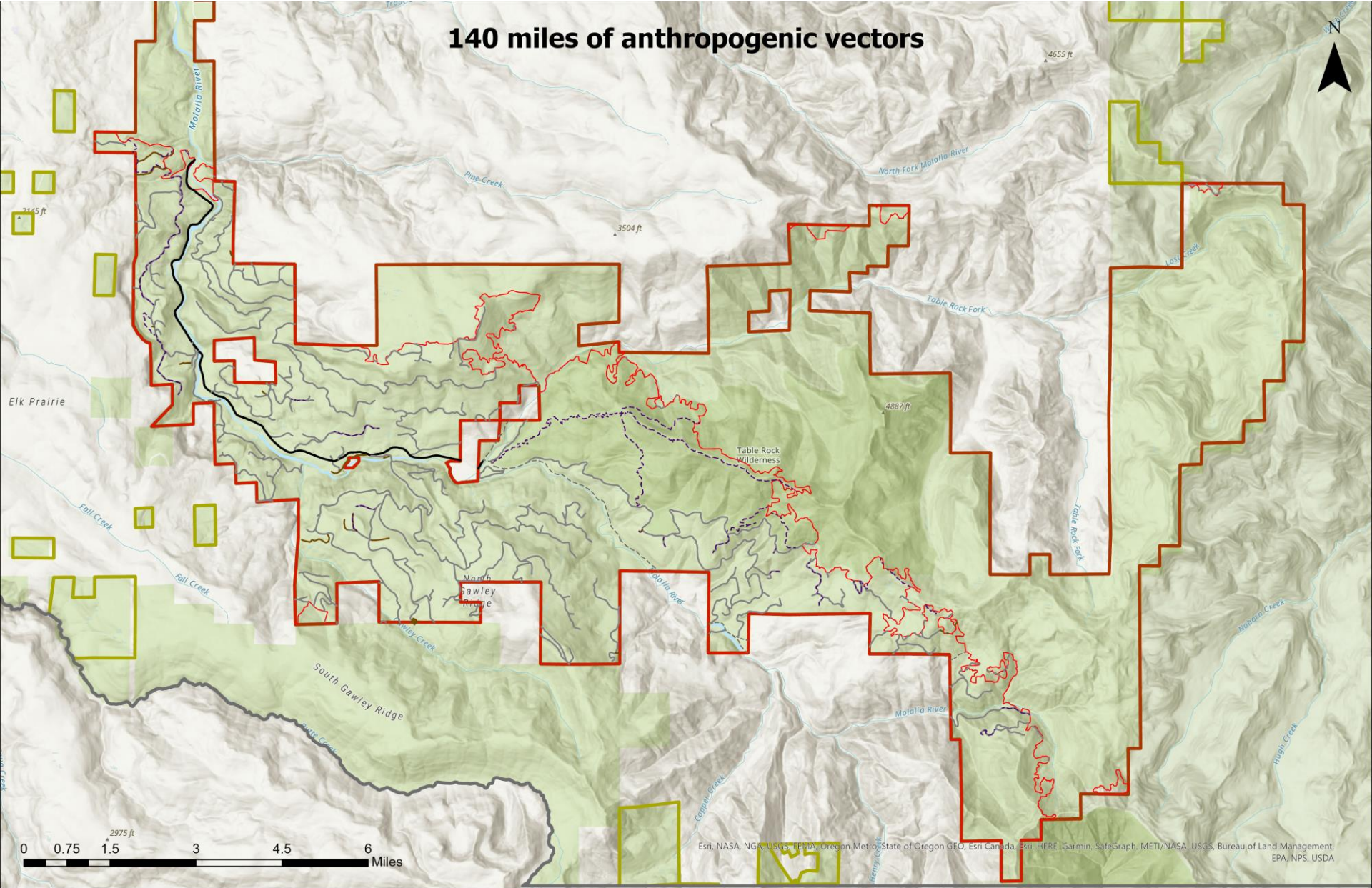


Esri, NASA, NOAA, USGS, FEMA, Oregon Metro, State of Oregon GEO, Esri Canada, Esri, HERE, Garmin, SafeGraph, METI/NASA, USGS, Bureau of Land Management, EPA, NPS, USDA





140 miles of anthropogenic vectors



Esri, NASA, NOAA, USGS, FEMA, Oregon Metro, State of Oregon GEO, Esri Canada, Esri, HERE, Garmin, SafeGraph, METI/NASA, USGS, Bureau of Land Management, EPA, NPS, USDA

October 2021







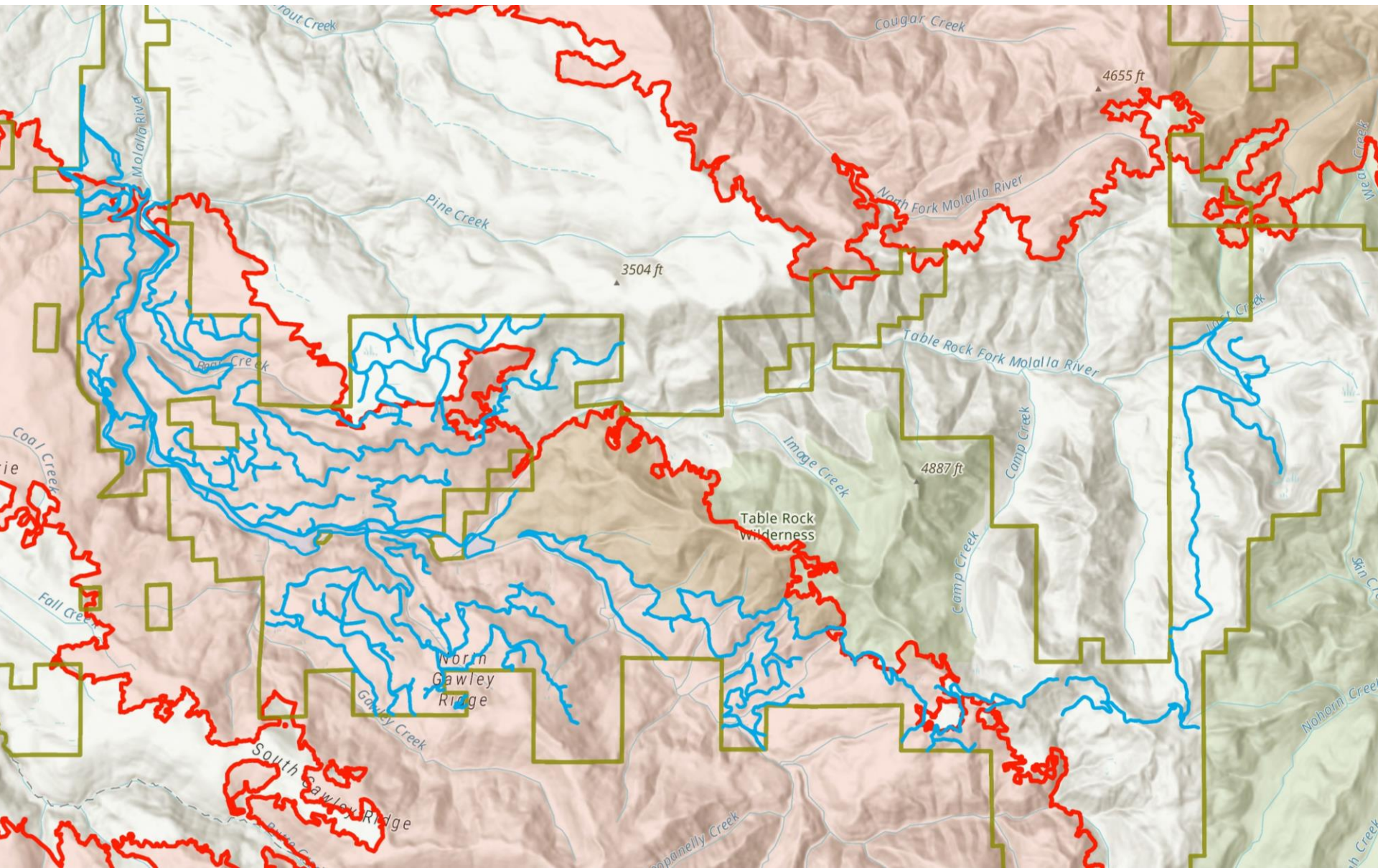








Treatments 10/2021 – 9/2022





10/2021 – 9/2022 (Federal FY)

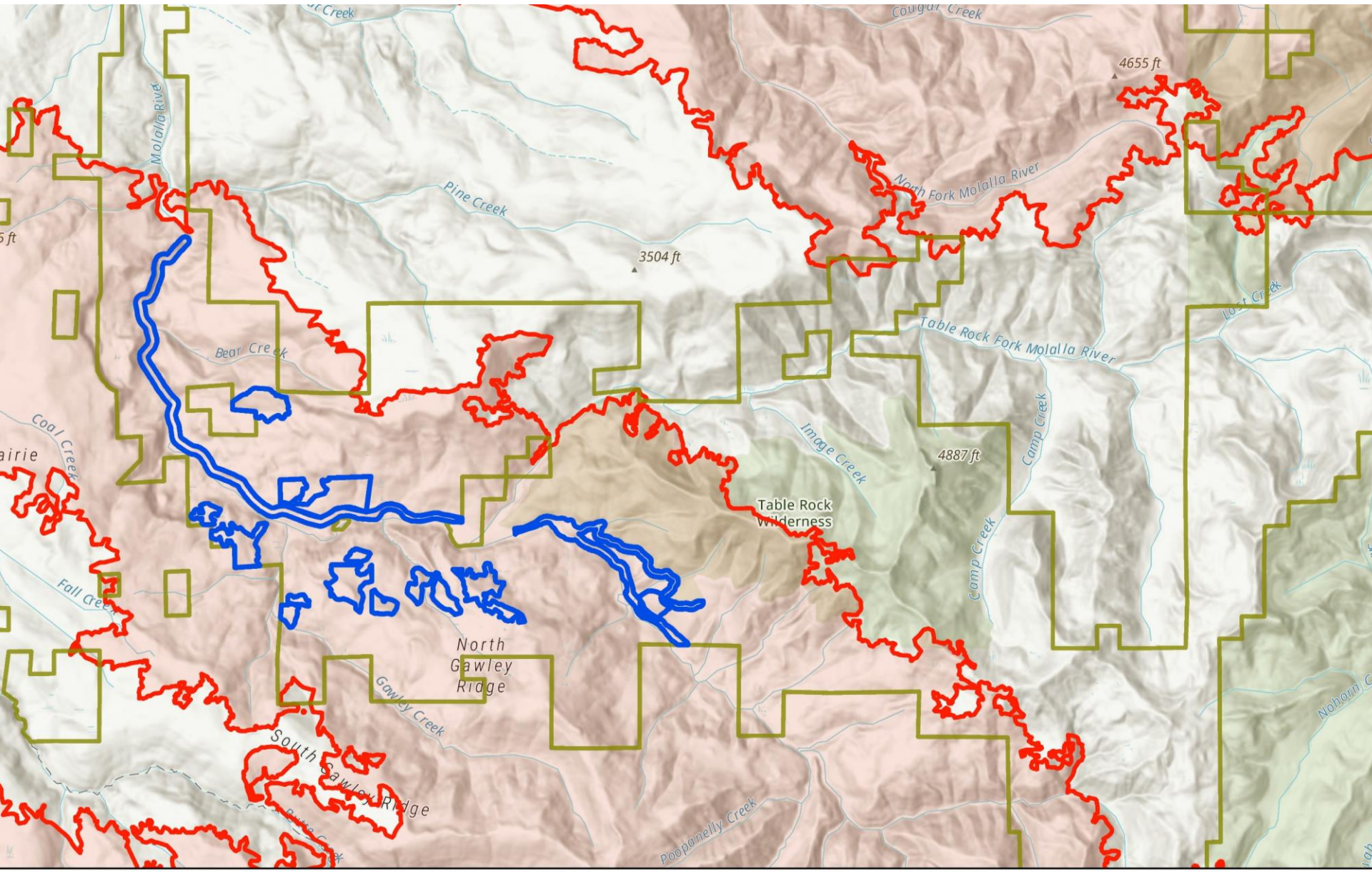
26

- ❑ Hand Crew Hours: 1,040 (\$47,000)
- ❑ Gross Treatment Area: 1,150 acres
- ❑ Net Treatment Area: 44 acres (4% of Gross)
- ❑ Gallons of Tank Mix Applied: 1,930





Hazard Tree and Salvage Areas















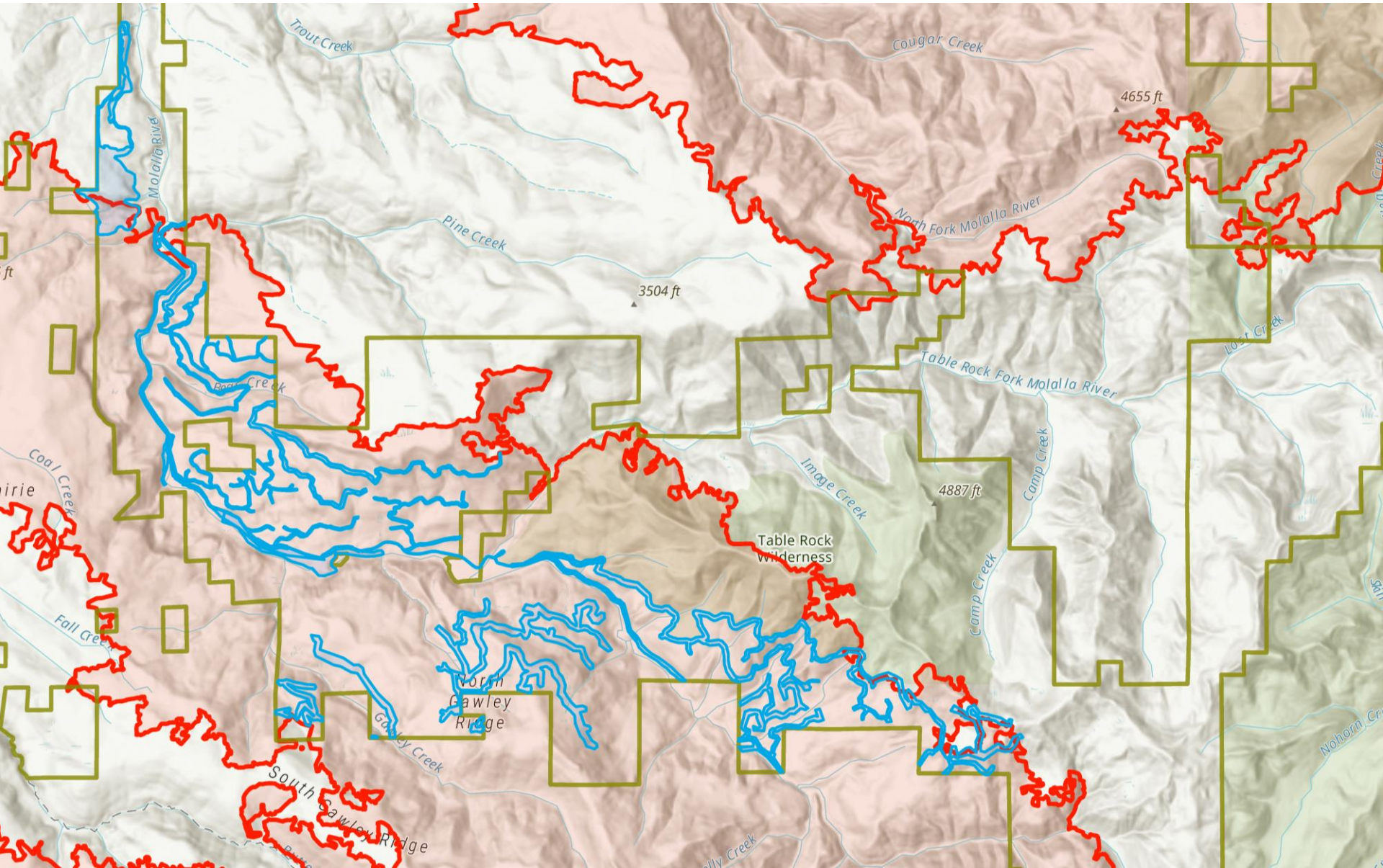








Treatments 10/2022 – 9/2023



10/2022 – 9/2023 (Federal FY)



41

- Hand Crew Hours: 750 (\$37,500)
- Gross Treatment Area: 2,050 acres
- Net Treatment Area: 47 acres (2% of Gross)
- Gallons of Tank Mix Applied: 1,410









