



WESTERN INVASIVES

NETWORK

A WORD FROM WIN

Courtney Gattuso

Western Invasives Network
Coordinator

Western Invasives Network (WIN)

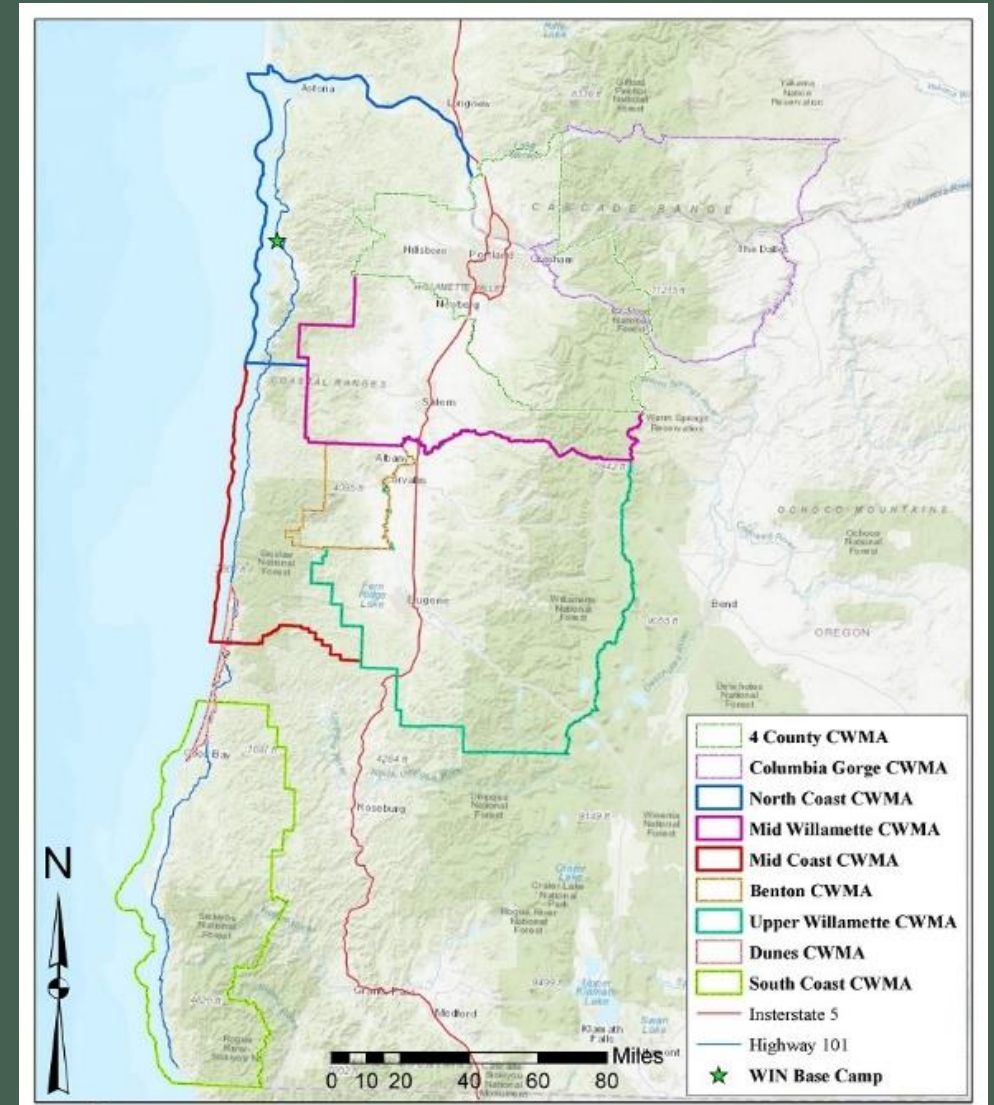
- Regional invasive species partnership network in western Oregon & southwestern Washington
- **Mission:** to prevent the introduction and to control the spread of harmful invasive plant species by coordinating information and activities of Cooperative Weed Management Areas (**CWMAs**) and willing land managers.

Our CWMAAs

- 4-County
- Benton
- Columbia Gorge
- Dunes
- Mid Coast
- Mid Willamette
- North Coast
- South Coast
- Upper Willamette

Newest additions:

- Klamath County
- Jackson/Josephine



iMapInvasives

- **Oregon Dataset:**

- Over 440,000 locations for 436 species in Oregon
- 121 organizations have contributed locations

- **2022 Stats:**

- 3107 total observations for 116 species
- 298 of those fall in Clackamas, Multnomah, or Washington counties
- Most reported species statewide:
 - Slender false brome
- Most reported species in 4-County region:
 - Garlic mustard



Upcoming projects:

- Coastal Invasive Species & Exotic Pest Workshop
- Washington State Weed Coordinators' Association Conference
- CWMA MOU renewals
- WIN Quarterly revival – call for submissions!

Thank you!

Western Invasives Network
Coordinator

weeds@cascadepacific.org

760-464-3898

