



PORTLAND PARKS & RECREATION

Healthy Parks, Healthy Portland

www.PortlandParks.org

Commissioner Amanda Fritz
Director Mike Abbaté

Outreach in for High Visibility Restoration

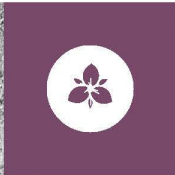
*Kendra Petersen-Morgan,
Natural Resource Ecologist*











A COMPONENT OF THE RENEW FOREST PARK INITIATIVE

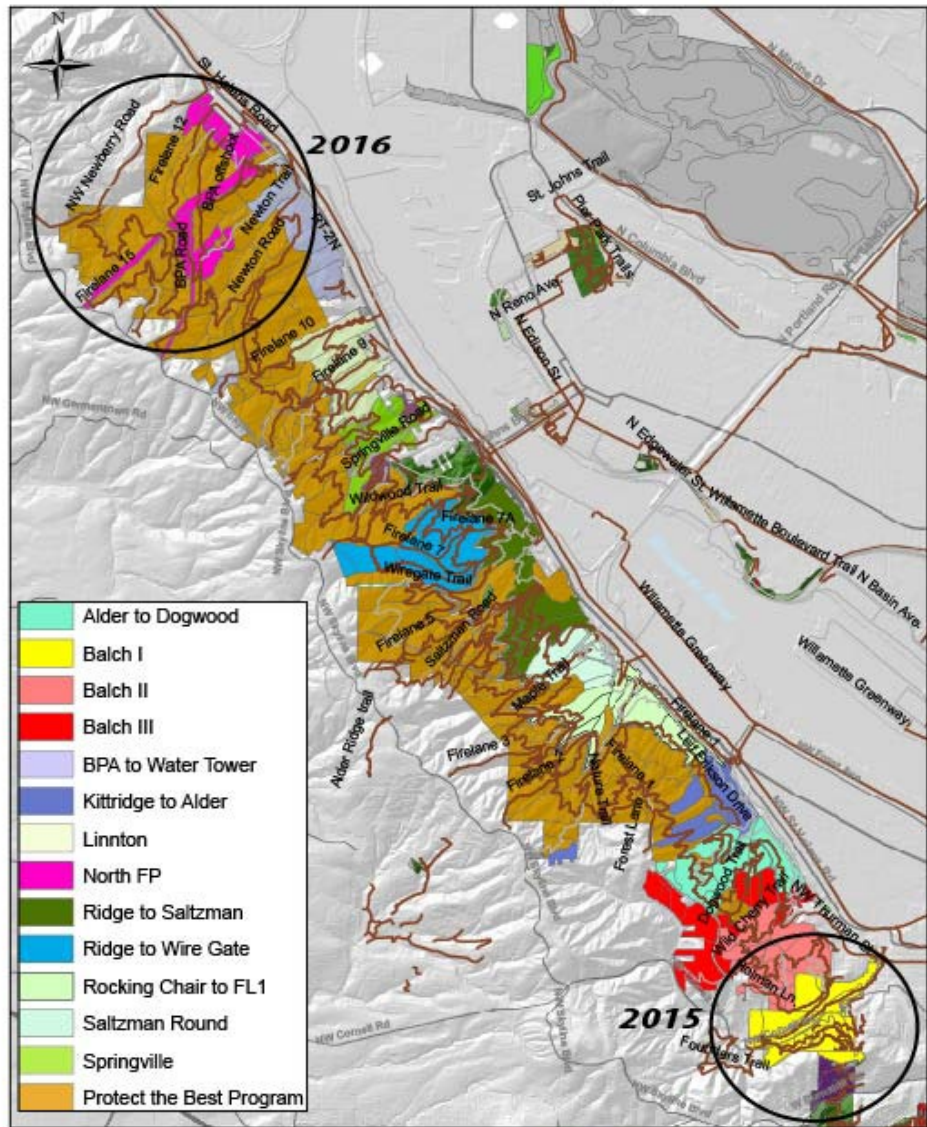
RESTORE FOREST PARK

TRANSFORMING THE ECOLOGICAL HEALTH OF PORTLAND'S GREATEST ASSET

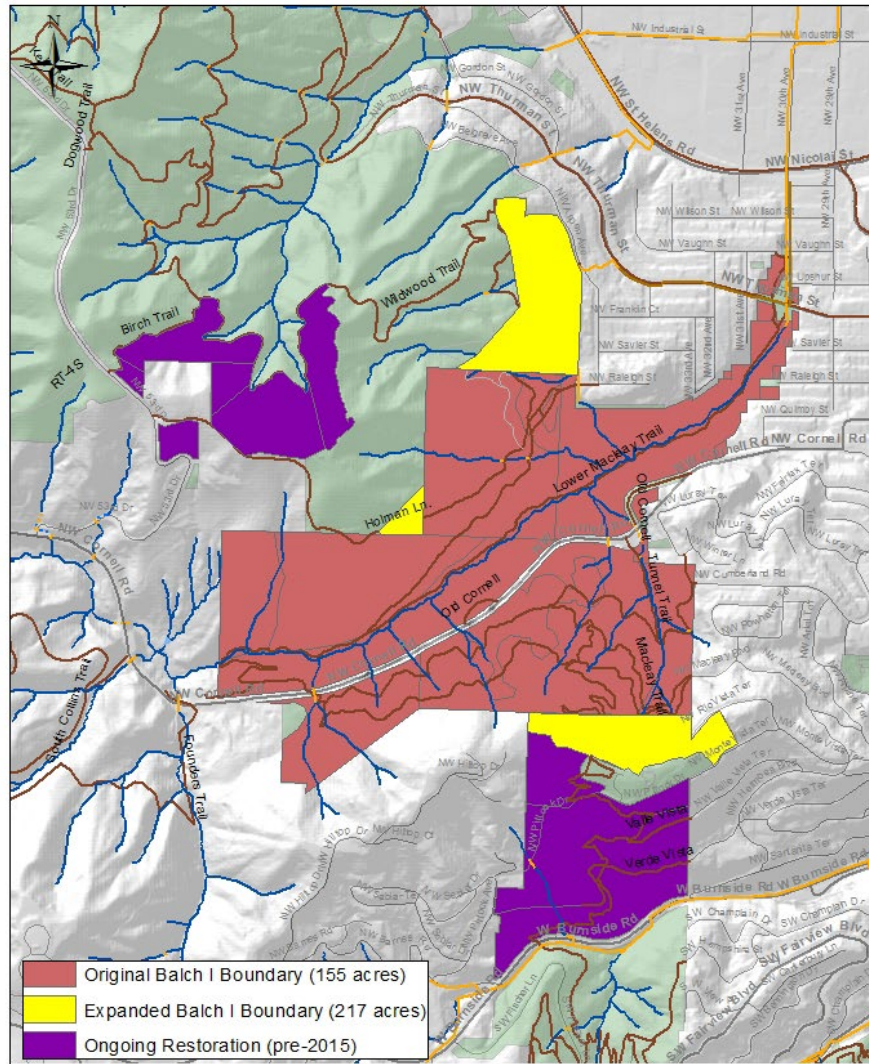


Photography courtesy of Bruce MacGregor

Restore Forest Park Projects



Balch I Restoration Area









On March 20, the World Health Organization announced that it was officially classifying the herbicide [glyphosate] — the most widely used farm chemical in the United States — as a “probable” cause of cancer.



**“Glyphosate is a
“probably
carcinogenic”
pesticide. Why do
cities still use it?” -
Guardian April 21,
2015**

**“Health Agency Says
Widely Used Herbicide
Likely Carcinogenic”
– Wall Street Journal
March 20, 2015**

**“A Top Weedkiller Could
Cause Cancer. Should We
Be Scared?”- NPR March
24th, 2015**

Outreach Strategy

- Key Messaging
- Employee Empowerment
- Public Information
- Media blitz
- Partner Endorsement
- Outreach Materials



Key Messaging

- The time is now
- This is the most sustainable/established approach
- PP&R is making a long-term commitment





A COMPONENT OF THE RENEW FOREST PARK INITIATIVE

RESTORE Forest Park

Transforming the Ecological Health of Portland's Greatest Asset



Photograph by courtesy of Bruce MacGregor

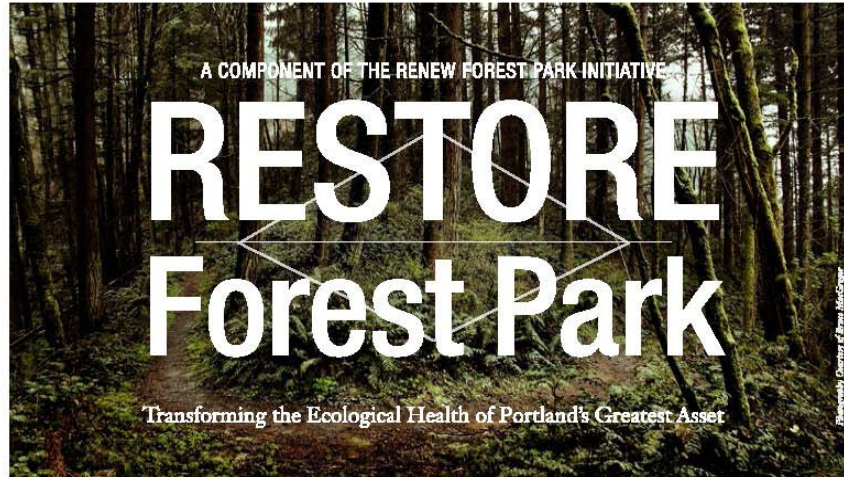
Outreach Strategy

- Key messaging
- Employee empowerment
- Public information
- Media blitz
- Partner endorsement
- Outreach materials





Public Information



- PROJECT SITE TOUR -

Saturday, August 1 | 10:00 AM - 12:00 PM

Meeting location announced after RSVP

Portland Parks & Recreation's City Nature Program is focused on removing invasive species to protect the ecological health of Forest Park.

The Balch Creek Launch Project is intensively focused on restoring 155 acres in the Balch subwatershed; prioritized for its ecological value and high visibility. This tour will introduce you to project restoration efforts that will include invasive species removal using manual and spray treatment techniques and revegetation.

This is a unique opportunity to learn about this groundbreaking project!

RSVP to participate by contacting the Forest Park Conservancy at info@forestparkconservancy.org

This project was made possible through a grant from Metro *Nature in Neighborhoods* and in partnership with Forest Park Conservancy.





Plan underway to battle invasive plants at Forest Park

A news anchor, Nora Hart, is shown in a studio setting. She is wearing a black and white patterned dress and holding a white envelope. Behind her is a large screen displaying the text "TAKING BACK FOREST PARK" in large, blue, bold letters. The background of the screen shows a forest scene. At the bottom of the video player, there is a progress bar and a timestamp of 01:25 / 01:31. The player also includes standard controls like play/pause, volume, and a share icon.

**TAKING BACK
FOREST PARK**

NORA HART
FIRST. LIVE. LOCAL.

01:25 / 01:31

RENEW Forest Park

PP&R

Greater Forest Park
Conservation
Initiative

FPC

RESTORE



Forest Park



A COMPONENT OF THE RENEW FOREST PARK INITIATIVE

RESTORE FOREST PARK

TRANSFORMING THE ECOLOGICAL HEALTH OF PORTLAND'S GREATEST ASSET

50 YEARS AGO, INVASIVE SPECIES WERE RARE IN FOREST PARK.
TODAY, FOREST PARK IS AT RISK.

Restore Forest Park is a long-term plan to transform the park's ecological health by removing invasive species and replanting native plants. Our success will be demonstrated by what we see when we are done—a healthy Forest Park with a diversity of wildlife.



PORTLAND PARKS & RECREATION
Healthy Parks, Healthy Portland





CAUTION

As part of a program to reduce an ecological health issue, please restrict non-native invasive plants and trees removal by state resources department.

For more information, please contact:

City of Portland, 2000 NE Oregon Street, Portland, OR 97232
USA, 503-944-3131

Please do not touch or remove any plants or trees in this area. Please stay on the path and do not enter the site.

RESTORE Forest Park
Restoring the Ecological Health of Portland, Oregon

RESTORE Forest Park is a long-term plan to improve the park's ecological health by removing invasive species and replanting native plants.

The project area is 110 acres that surrounds the north of Forest Meadows in near Mount Laus. Through the project, we will remove invasive species, improve native plant health, and create a more diverse and resilient ecosystem.

Ecosystem Management Elements

Natural Areas Restoration Plan 2010, includes 2015 addendum

Foster Floodplain Natural Area: A Case Study for Restoration

Natural Area Acquisition Strategy 2006

Metro Natural Areas Bond

Natural Resource Inventories

Forest Park Management Initiatives

RENEW Forest Park

Barred Owls in Portland's Natural Areas

Dogs are Not Permitted Off-leash in Portland's Natural Areas (PDF)

 [Subscribe to RSS](#)

MOST POPULAR

[Forest Park Management Initiatives](#)

[Natural Resource Inventories](#)

[Oaks Bottom Wildlife Refuge](#)

[Natural Area Vegetation](#)

[Kelly Butte Natural Area](#)

RENEW Forest Park



RENEW Forest Park is a unique opportunity to make a significant and comprehensive investment in Forest Park.

This \$20+ million, 20-year initiative includes three main components that look holistically at *ecology*, *recreation* and *access*. Together, we will renew this remarkable asset and create a legacy for generations to come.



▶ **RESTORE** (*ecology*)
Habitat restoration and invasive species removal



▶ **REBUILD** (*recreation*)
Repairs to trails, signage and bridges



▶ **RECONNECT** (*access*)
Improving access to and education about the park

Questions?

